



**CNR 3-35 N**

# CNR 3-35 N non rewind film system instructions

The CNR 3-35 N is a film transport system with horizontal platters. It operates as a slave system and does not need film rewind.

The platters have a film capacity of 7,800 metres (25,000 feet). The film is fed to the projector through a center pay-out unit, and is taken up on a take-up ring.

The film tension is kept constant by the take-up arm spring.

The platter speed is controlled by an electronic circuit, and each platter is totally independent in operation.

Non rewind system means:

- 1 - To do away with the rewind process.
- 2- To increase the uninterrupted projection time without modifying the projector

The film as taken up on one platter is ready for projection.

The pay-out center unit is inserted, the film is taken through it, threaded through the projector and then taken to the take-up ring.

As the projector starts, the take up arm detects the film motion and starts the take-up platter itself

The pay-out unit too detects the film motion and starts the pay-out platter,

In this way the projection is carried out in a situation of balance between the take-up and the pay-out platters.

As soon as the performance is over, the film is ready to be rethreaded with the functions of of the two platters inverted.

## System packing

The complete system inclusive of make up table (if supplied) is shipped as follows:

	Dimensions	Weight
Case A)	1920x1300x470mm	160 Kilos
Case B)	1410x1410x370mm	100 Kilos
Box C)	1110x980x660mm	65 Kilos

Case A) includes the main mast with the legs, accessories, pay-out unit/units, take-up rings

In the case B) the three platters are shipped.

Box C) includes the make up table.

The cases are to be opened with the nail poller and should be moved without turning them upside down

## Installation:

Open case A) first, removing the upper cover and then one of the two sides.

Take out all the accessories and the legs. Free the main mast, **lift** it carefully and rest it on the floor as shown on the figure no. 1.

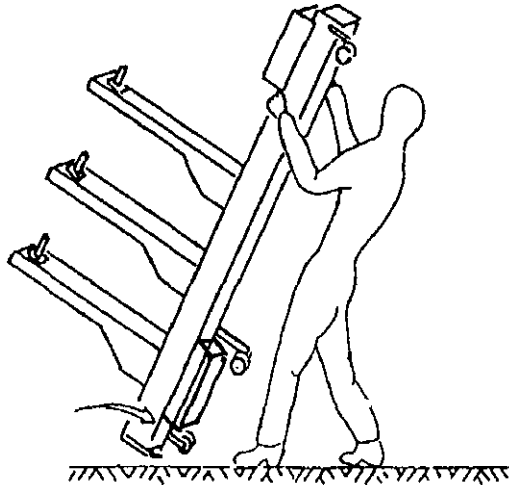
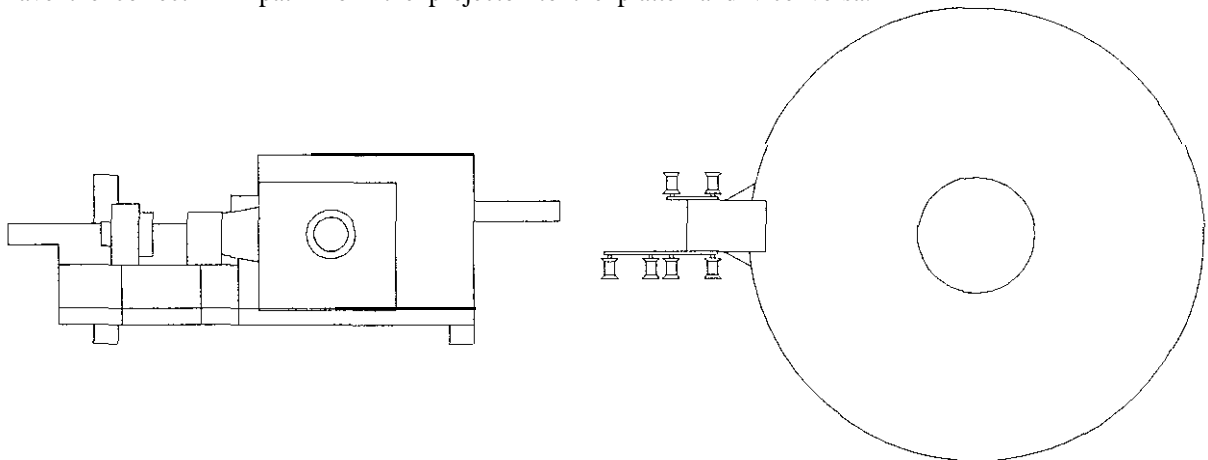


Fig. 1

Making sure not to damage the roller pointed by an arrow.

With the help of another person, bolt the legs to the mast by means of the six Allen screws, which are shipped mounted in their holes.

Lock the screws, stand up the mast in its **final** working position. Some guide rollers could be necessary to have the correct film path from the projector to the platter and vice versa.



Acting on the **levelling** screws try to make the system perfectly horizontal

Open case **B)** by first loosening the outside bolt and then pulling the **nails** from the cover. The platters are protected by a plastic film to be peeled off before beginning operation.

Make sure that the platter driving wheels (a rubber wheel fitted on the motor shaft of each platter) are in the disengaged position (see figure no. 2). If not disengaged them with the lever (Figure no. 3).

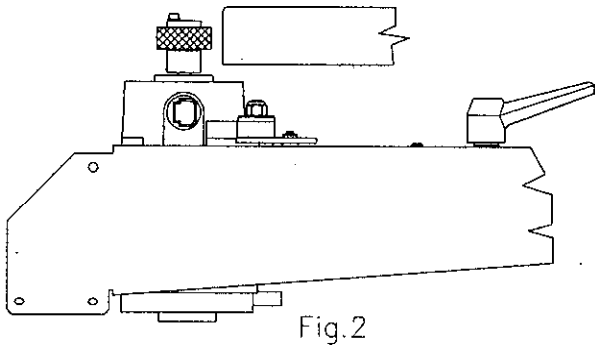


Fig.2

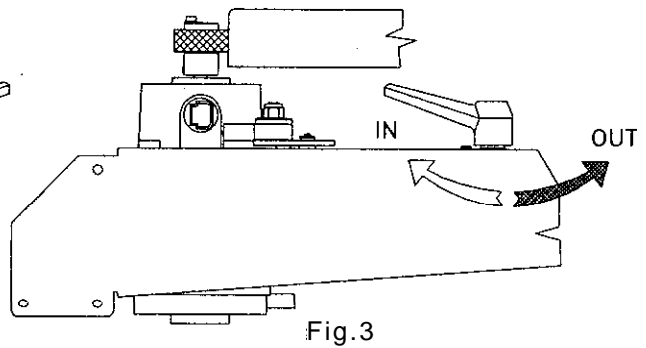
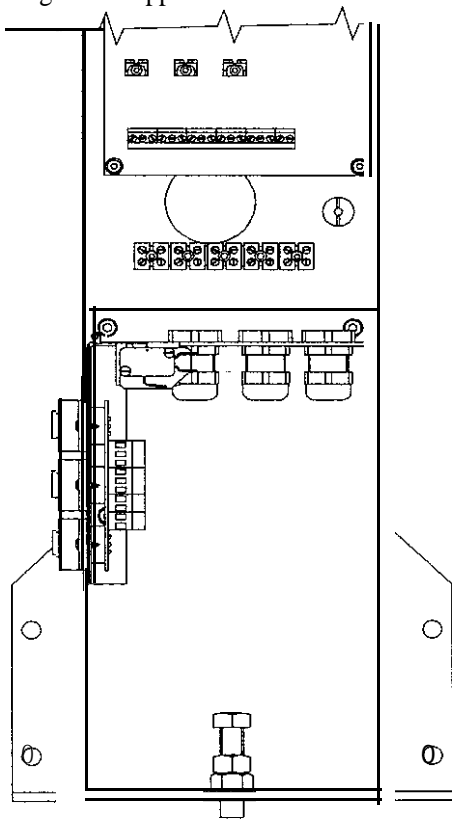


Fig.3

Insert the platters on the spindles **starting** with the lowest one.

Loosening the four screws that retain the control box cover, take out it, paying attention to lift the **film buffer** rail roller while removing the cover; by not doing so, the safety microswitch **could** be damaged. Connect the mains wires and the projector **safety** units to the terminal board as indicated on the wiring diagram supplied.

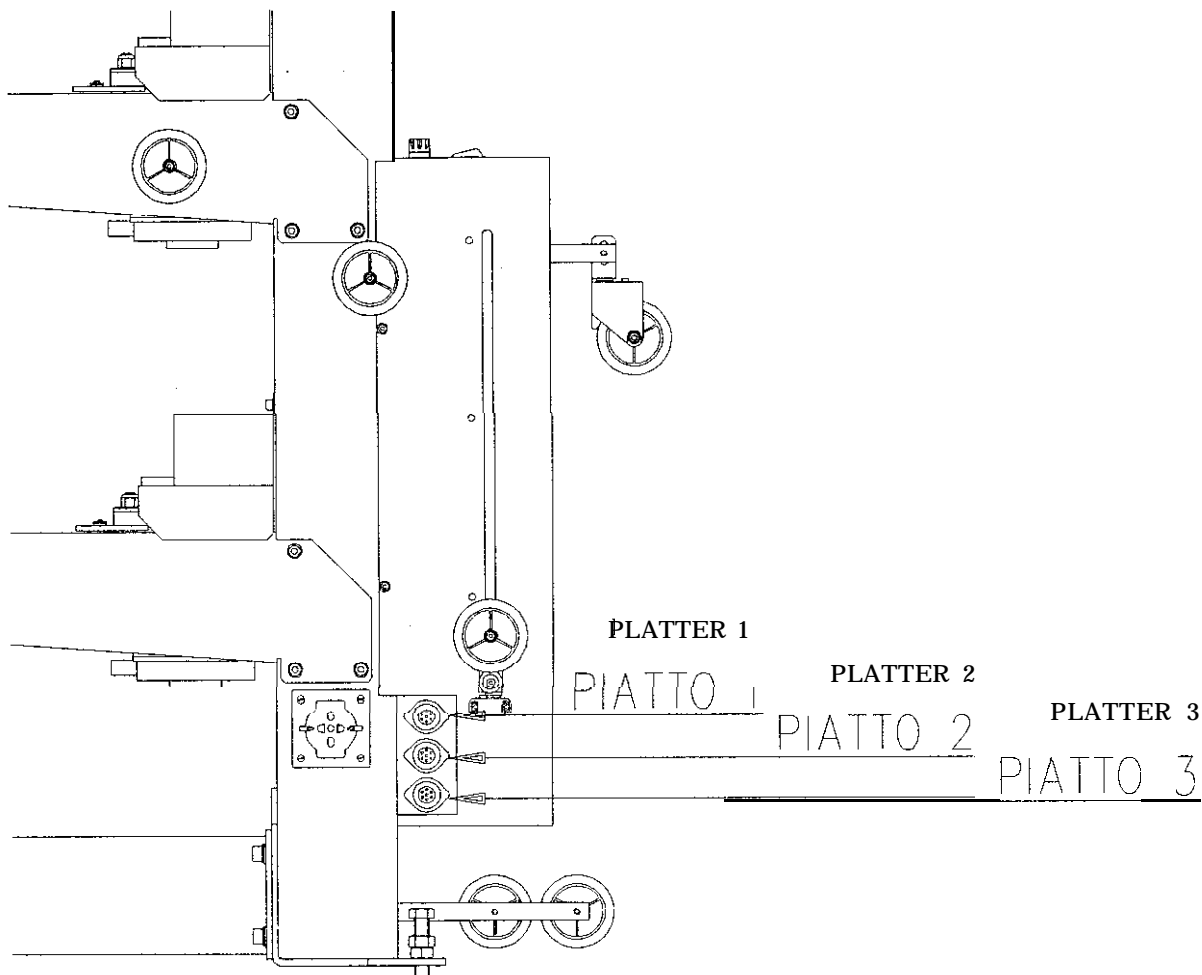


Mount again the cover keeping also in this case the safety roller lifted.

At this point the system is ready to operate.

## Film make-up

Connect the make-up table (with a flying connector) to the connector fitted on the platter bottom side. The position of the connectors follows the order of the platters.



Connect the mains to the make up table by inserting the plug into the socket at the bottom of the **CNR**, near the **connectors** or in any other socket.

Now you must pay attention to the color of the LED located below the mains switch of the control panel. **If it** becomes green you can start operating; if it is red you have to turn off the make-up table and insert the plug reversed. It is necessary that the platter and the make-up table mains are in phase.

Turn on the mains switch of the make up table (as it is **turned** on, the connected platter is going to turn one fourth of a revolution due to the fact that the speed control circuit is now energized). Move the switch on "Make up" position.

- Make up the part no. 1 from the beginning. If received not rewind, reverse it on a film **rewinder** or on the make up table itself if supplied with the auxiliary arm and clutch (sold as an option).
- The film path is shown on the drawing. The film is to be made up on the platter with the emulsion inside.
- The make up speed is controlled by a slider on the make up table.
- During the make up process, the make up table can be put anywhere but as near as possible to the platter, in order to reduce to the minimum the distance and to avoid a non-uniform make up due to the

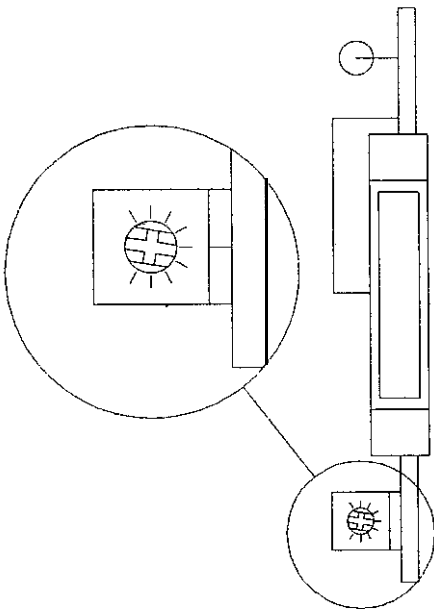
film elasticity.

## Speed adjustment

The system is completely adjusted and set at the factory. If further adjustment is necessary in the projection room, please proceed as follows:

### A) PAY-OUT FUNCTION

Verify that the trimmer, placed on the speed control card contained in the lower cover, is the position indicated in the above figure:



Insert the pay-out unit on the uppermost platter. Moving the pay out control arm for the first 5 degrees (20mm approx.), the platter should not move.

To obtain this condition, loosen slightly the screw which locks the control arm to the potentiometer spindle, and turn with a small screwdriver the pot spindle holding the arm in position, until the platter stops.

With the speed control arm at the end run, the platter should make 60-65 revolutions per minute.

If the required maximum speed cannot be obtained, adjust the trimmer on the printed circuit card. After this operation check the speed control arm pot **setting** it in order to **find "0"**.

Then tighten again the locking screw.

Now fit the pay-out unit in the second platter and, without touching the control pot, adjust the trimmer on the printed circuit card to obtain the required speed.

Do the same for the third platter.

If two or more pay-out units are supplied, as soon as the outlined procedure is finished, insert the second pay-out unit on the **first** platter and adjust only the control pot.

The pay-out unit will be automatically set for the three platters.

## B) TAKE UP FUNCTION

Move the swivel roller carriage along the vertical rail on the left side of the main mast and stop it at the platter where taking up is required during projection, Threading the **film** in the speed control arm roller, the platter is automatically switched to **TAKE-UP function**.

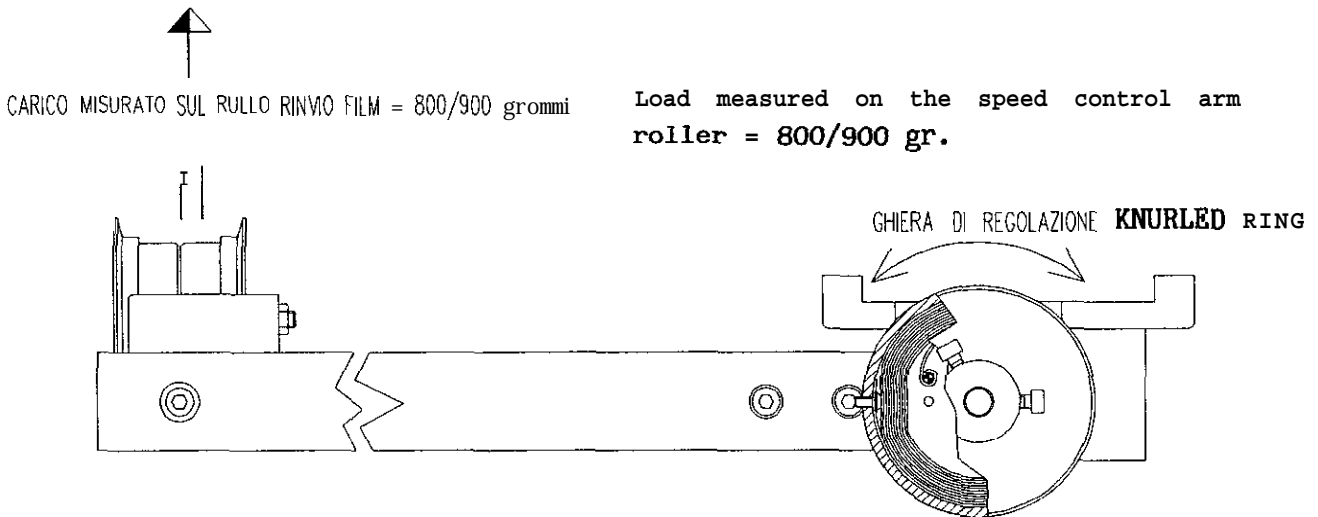
### Trouble shooting

- **Adjustment of the speed control arm spring load:**

Using a dynamometer, make sure that the tension created on the speed control arm roller is approx. **800/900 gr.**

Should this tension be different, adjust it to the correct **value** using the knurled ring that loads the spring, loosening the two locking screws at 120 degrees.

This ring contains a very strengthful spring, so pay attention not to make the ring slipping out of your fingers. The two screws must be always completely tightened.



- Setting of the zero speed of the pot of the speed control arm:

Connected to the speed control arm fulcrum, there is a pot which controls the platter rotation speed by an electronic circuit.

The zero **speed** should be reached when the control arm is at about **0.70m** from the mast.

Should an adjustment be necessary, make a **film** loop (**1.3m** long) and place it on the rollers of the speed control arm and of the carriage swivel assembly.

After loosening the screws which lock the potentiometer to the spindle, act on it to make that, with the film loop in the correct position the platter rotation is ulmost unnoticeable. Now lock the joint screws and make sure that starting **from** the mast, the speed increases gradually following the arm rotation till it touches the safety microswitch.

## Projection

Insert the pay-out unit in the platter where the film has to be paid out and take away the take up ring placing it on the platter that will receive the **film**.

Thread the film through the rollers of the pay-out unit and through the projector.

Move the swivel roller carriage along the rail **and** stop it at the platter where taking up is required. Coming out of the projector, take the film through the swivel roller carriage and wind up the leader to the take up ring.

Rotating by hand the platter, on which the film has to be taken up, the arm will move away from the safety microswitch. Immediately, the motor engaged to the platter rim starts turning till the film reaches the correct tension.

## Film break down

Adjust the make up table rollers at the same height of the platter from which the film has to be broken down. If the economic make up table is supplied, the film make-up and break down operations can be done only from the central platter.

Turn the switch to **BREAK DOWN** position. Connect the supply cable to the plug at the bottom of the mast. **Turn** on the mains switch.

The spool shaft is going to turn about one fourth of a revolution due to the fact that the speed control circuit is now energized.

Rotate the motor handle, moving away the rubber wheel from the platter as indicated on fig. 4.

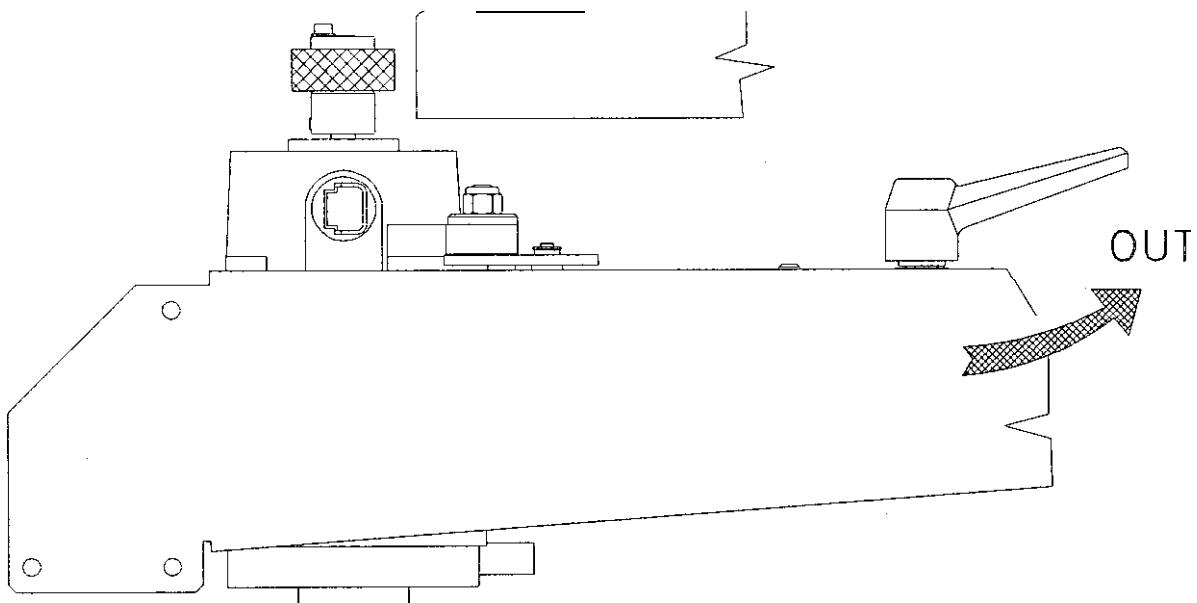


Fig. 4

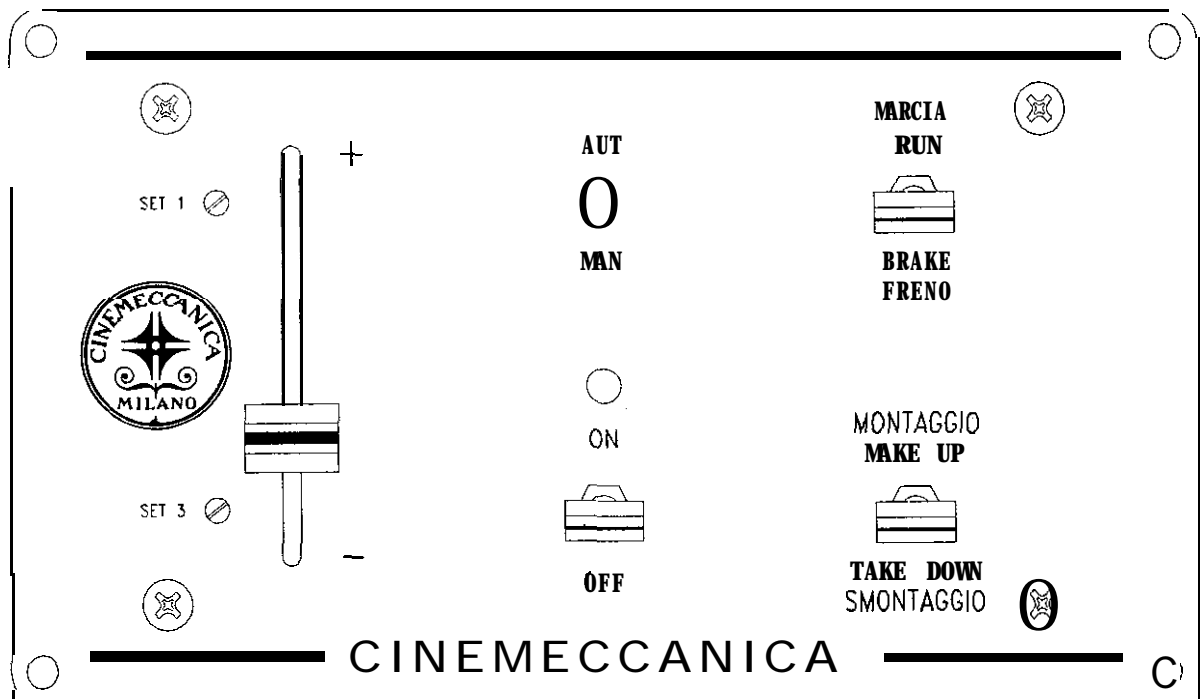
Acting on make up table slider, the film break down operation can start.

As the control of the paying out platter is independent from that of the make up one, it is possible to feed from one CNR system and end up into a different CNR system.

The speed control cards, in their box, are exactly the same and therefore interchangeable.

If the make up table does not work properly, the max. rotation speed must be adjusted acting on the pot "SET 1" (400 RPM at the spool shaft). The zero speed must be set through the pot "SET 2".

The zero speed can be reached sliding the adjusting knob in a position about 15mm **from** the bottom of slot.



## Maintenance

The required maintenance is very scarce.

Motor bearings are sealed and require no lubrication.

Motor brushes must be checked every SIX months.

Film rollers are made of self-lubricating plastic. No oil should be used. It is only necessary to clean the spindle with a rag from time to time.

The new electrical circuit now used allows the make up table control circuit to by-pass the standard the speed control card fitted in the platter electrical box. This feature can be **useful** in case of failure of the card. By the slider of the make up table it is possible to control the speed of the paying out and make up platters, **allowing** to end the running show before replacing the defective card.

If the CNR is equipped with the electrical brake, a toggle switch and a timer are predisposed on the make up table control card. The former triggers the electrical brake when set in the BRAKE position. The latter

limits the brake action to avoid any overheating of coil.

The electrical brake must be fixed on **the** external side of the arm and must be connected to the cable supplied on demand with the make up table.

The terminal board, existing on the three connectors printed circuit board (**pins 9 and 10**), can directly energize the electrical brake avoiding to have a long **line** connecting the brake. A female plug **can** be **predisposed** to receive **the** male plug of the brake.

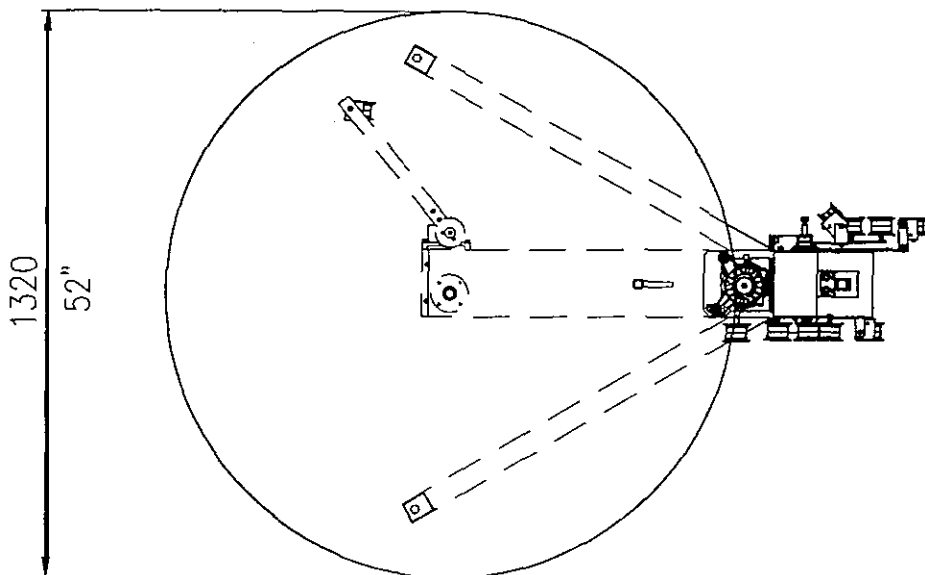
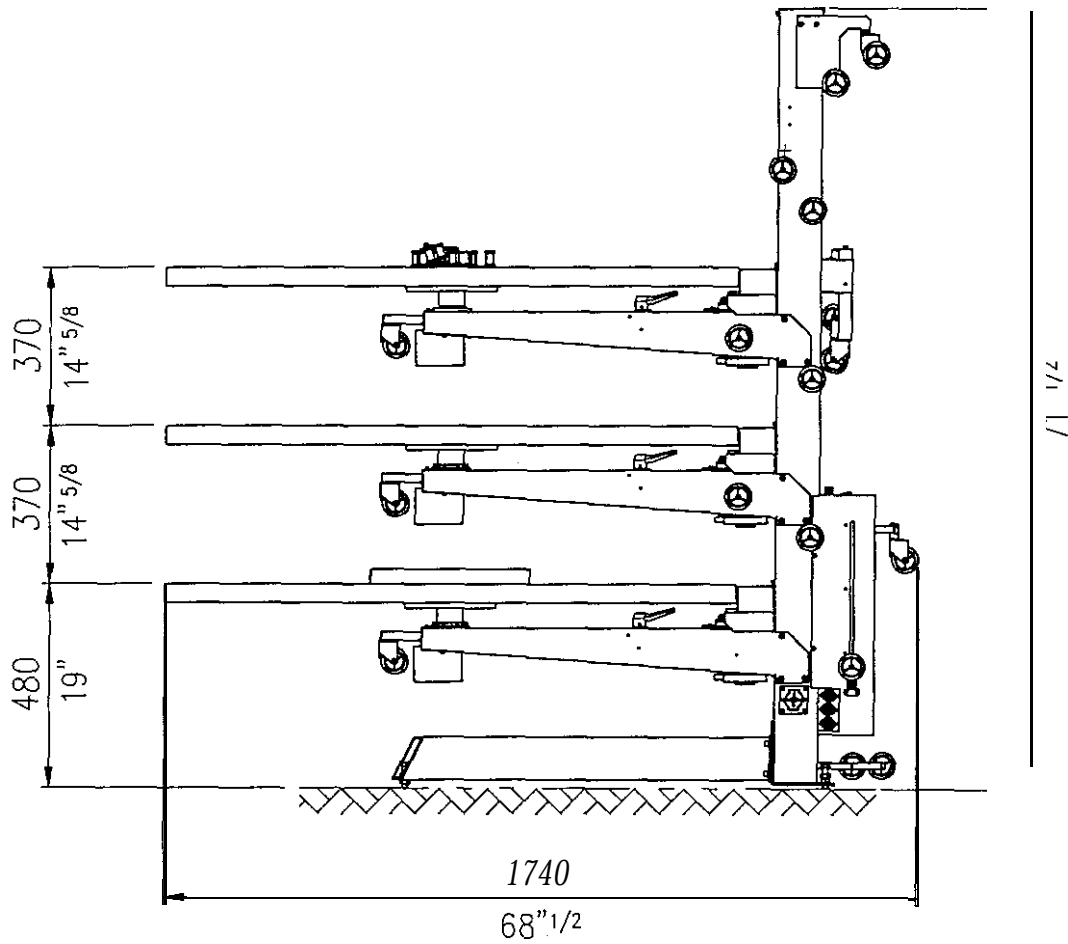


CNR 3-35N

Misure d'ingombro

Overall dimensions

Dis. 8784



ISEGNATO	VISTO	DATA
MC		29-04-97

Peso Kg.
Scala

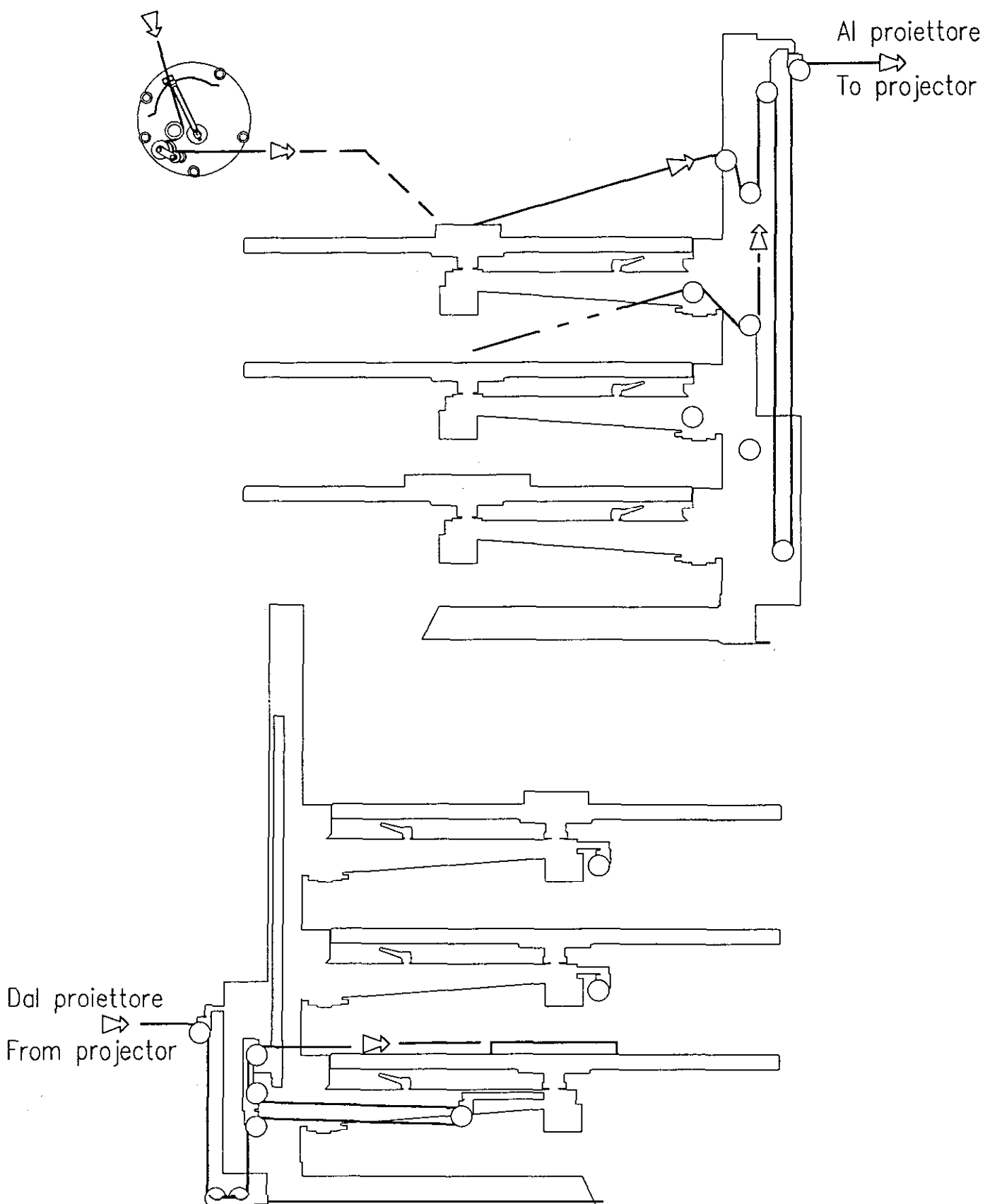


CNR 3-35N

Percorso film

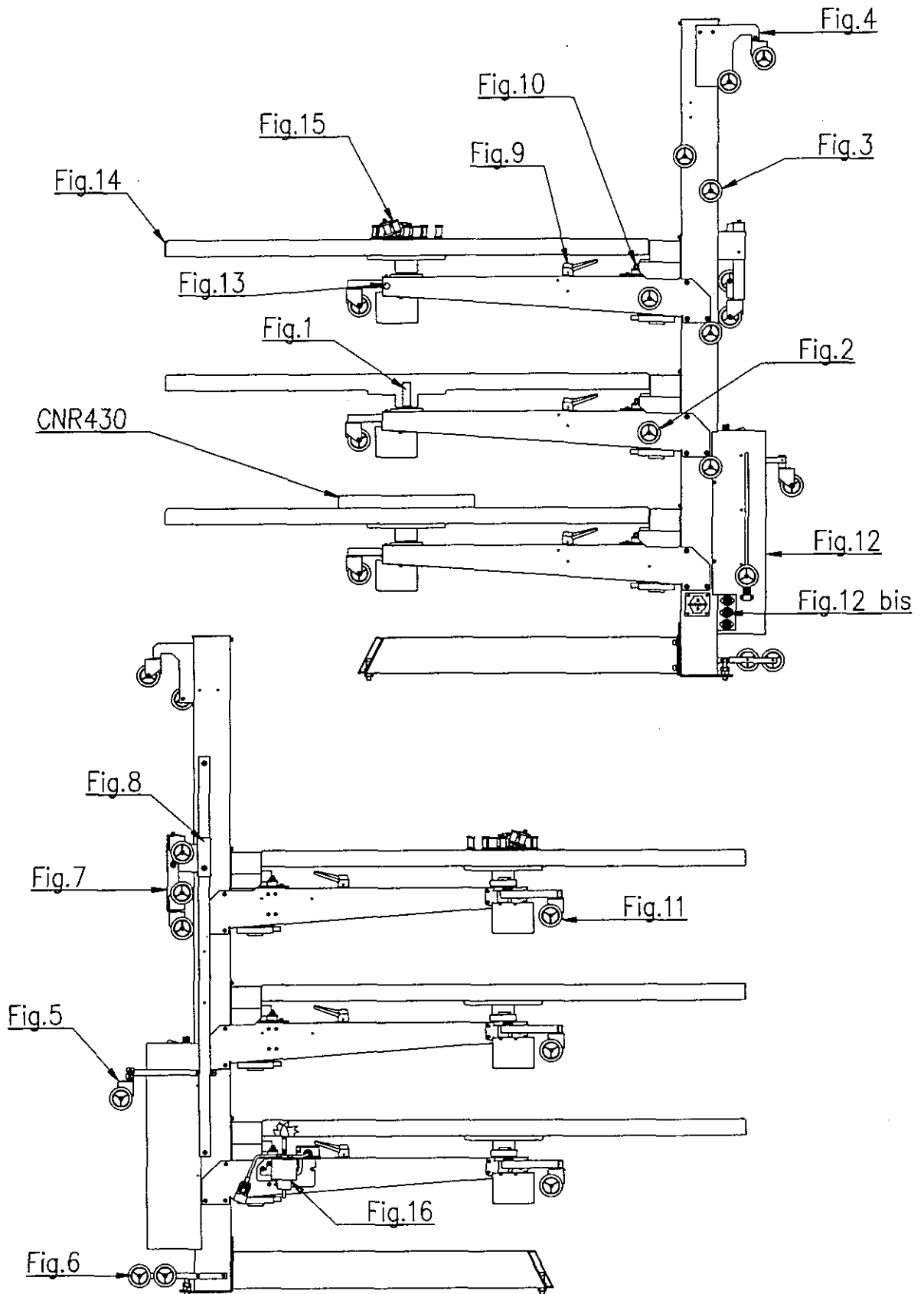
Film threadings

Dis. 8790



DISEGNATO	VISTO	DATA
MC		30-05-07

Peso Kg.  
Scala



Disegnato	Data	Aggiornato
uc	16-06-97	21-10-97



CNR 3-35N

Riferimento gruppi

Assembly references

Dis. D091 04

	Percorso film CNR 3-35N	8790	CNR 3-35N film threading
	Misure d'ingombro	8784	Overall dimensions
Fig.1	Innesto piatto	D09104-1	Platter spindle assembly
Fig.2	Rullo laterale	D09104-2	Flanged roller
Fig.3	Rullo laterale	D09104-2	Flanged roller
Fig.4	Rullo uscita film	D09104-3	Pay-out rollers
Fig.5	Rullo entrata film	D09104-4	Film take-up roller
Fig.6	Rulli fissi entrata film	D09104-5	Flanged rollers assembly
Fig.7	Rulli guidafilm sul piatto	D09104-6	Film take-up rollers
Fig.8	Cursore portarulli	D09104-7	Film take-up assembly carriage
Fig.9	Sella motore	D09104-8	Motor support
Fig.10	Gruppo motore	D09104-9	Motor assembly
Fig.11	Braccio compensatore	D09104-10	Speed control arm assembly
Fig.12	Rulli controllo tensione film	D09104-11	Film tension safety rollers
Fig.12 BIS	Apparecchiature elettriche	D09104-12	Control box assembly
Fig.13	Luce piatto	D09104-13	Platter light
Fig.14	Piatto raccogliofilm	D09104-14	Platter assembly
Fig.15	Dispositivo comando motore 35mm	D09104-15	35mm film pay-out assembly
Fig.16	Freno per piatto	D09104-16	Platter brake assembly

## C N R 3-35N

Fig. 1

Innesto piatto	Platter spindle assembly	Axe support plateau
<ul style="list-style-type: none"> <li>-1001011 - Vite M4x8 UN15931</li> <li>-1066002 - Rosetta dia.4 UN18842</li> <li>-3612702 - Connettore 6 poli</li> <li>-CNR114 - Rosetta per connettore</li> <li>-CNR115 - Rosetta fissaggio connettore</li> <li>-CNR117 - Covo elettrico</li> <li>-D08601 - Innesto piatto</li> </ul>	<ul style="list-style-type: none"> <li>-1001011 - M4x8 UN15931 screw</li> <li>-1066002 - Dia.4 UN18842 washer</li> <li>-3612702 - 6-pole socket connector</li> <li>-CNR114 - Connector washer</li> <li>-CNR115 - Connector locking washer</li> <li>-CNR117 - Connector cable</li> <li>-008601 - Platter spindle</li> </ul>	<ul style="list-style-type: none"> <li>-1001011 - Vis M4x8 UN15931</li> <li>-1066002 - Rondelle dia.4 UN18842</li> <li>-3612702 - Connecteur DIN F6</li> <li>-CNR114 - Rondelle pour connecteur</li> <li>-CNR115 - Rondelle fixation connecteur</li> <li>-CNR117 - Cable pour connecteur</li> <li>-D08601 - Axe support</li> </ul>

# CNR135

CNR, 3-35N

Fig.2

Rullo laterale	Flanged roller assembly	Galet guide
<ul style="list-style-type: none"> <li>-00814 - Rosetta</li> <li>-1001011 - Vite M4x8 UN15931</li> <li>-01628 - Semirullo con guide (2pz)</li> <li>-CNR137 Peno per rullo</li> </ul>	<ul style="list-style-type: none"> <li>-00614 - Washer</li> <li>-1001011 - M4x8 UN15931 screw</li> <li>-01628 - Half flanged roller (2pcs)</li> <li>-CNR137 - Roller spindle</li> </ul>	<ul style="list-style-type: none"> <li>-00814 - Rondelle</li> <li>-1001011 - Vis M4x8 UN15931</li> <li>-01628 - Semi-galet guide (2pcs)</li> <li>-CNR137 - Axe galet</li> </ul>

# D10226

CNR 3-35N

Fig.3

Rullo laterale	Flanged roller assembly	Galet guide
<ul style="list-style-type: none"> <li>-00814 - Rosetta</li> <li>-1001011 - Vite M4x8 UN15931</li> <li>-01628 - Semirullo con guide (2pz)</li> <li>-D10224 - Peno per rullo</li> </ul>	<ul style="list-style-type: none"> <li>-00614 - Washer</li> <li>-1001011 - M4x8 UN15931 screw</li> <li>-01628 - Half flanged roller</li> <li>-D10224 - Roller spindle</li> </ul>	<ul style="list-style-type: none"> <li>-00814 - Rondelle</li> <li>-1001011 - Vis M4x8 UN15931</li> <li>-01628 - Semi-galet guide (2pcs)</li> <li>-D10224 - Axe galet</li> </ul>



CNR 3-35N

Innesto piatto

Platter spindle assembly

Di s. D09104-

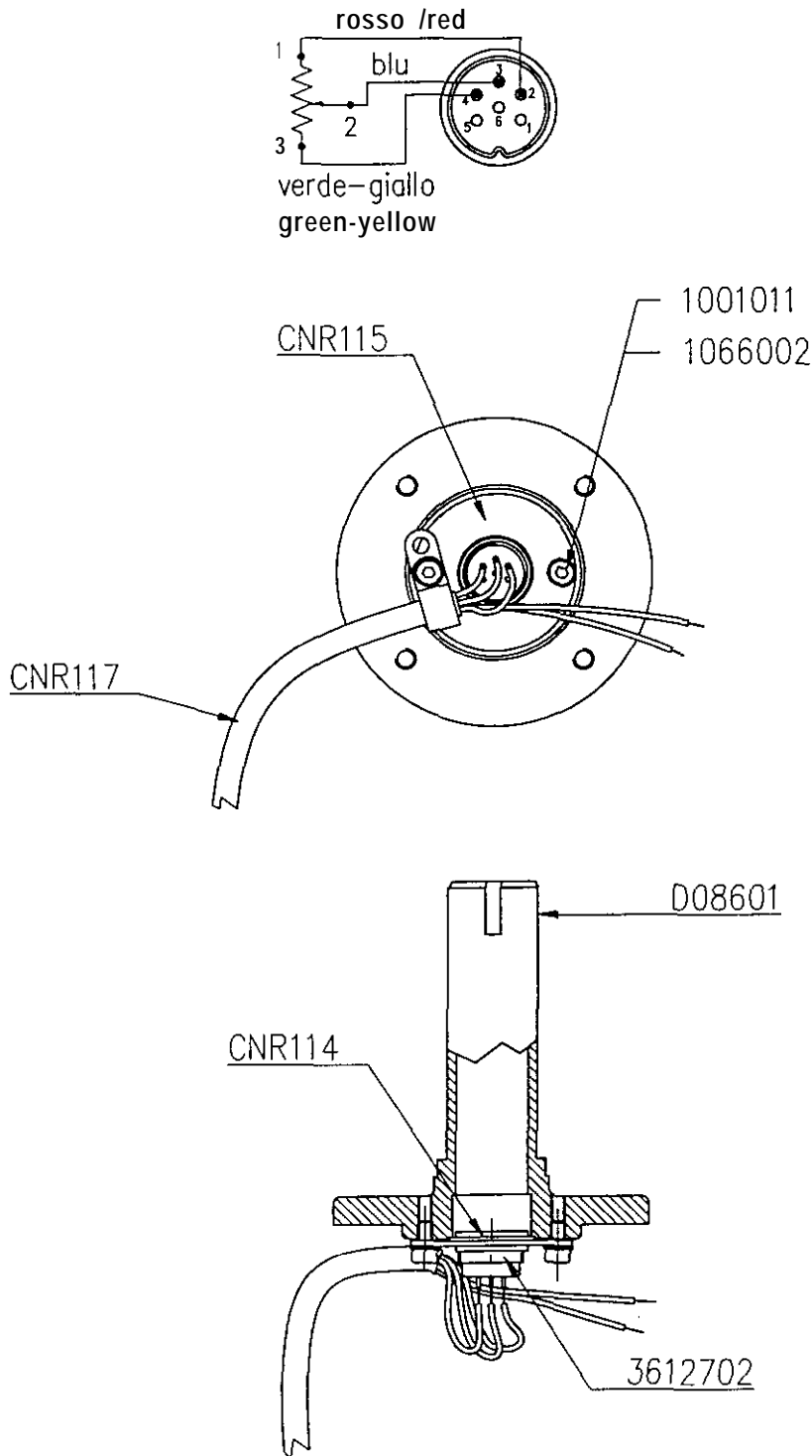


Fig. 1

Disegnato	Data	Aggiornato	
MC	16-E-97		Scala



CNR 3-35N

Rullo laterale

Flanged roller assembly

Di s.D09104-2

Assembly  
# CNR135

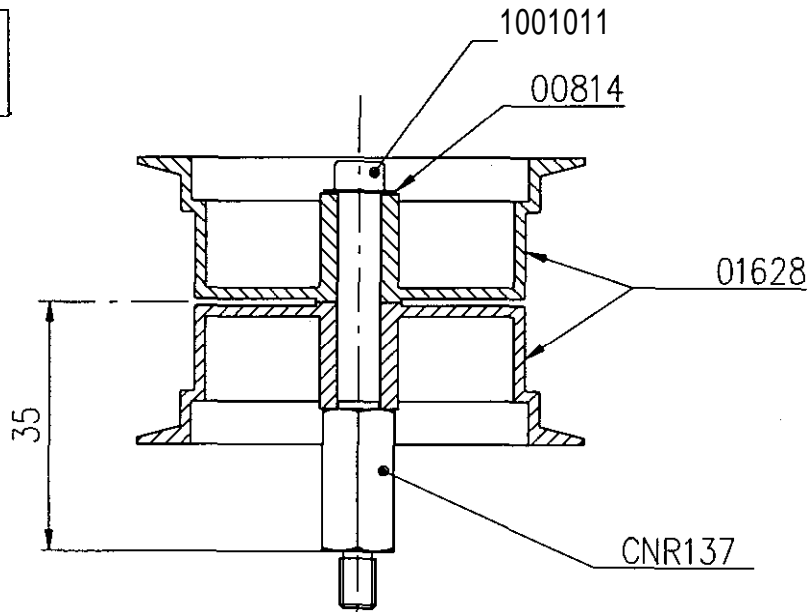


Fig.2

Assembly  
# D10226

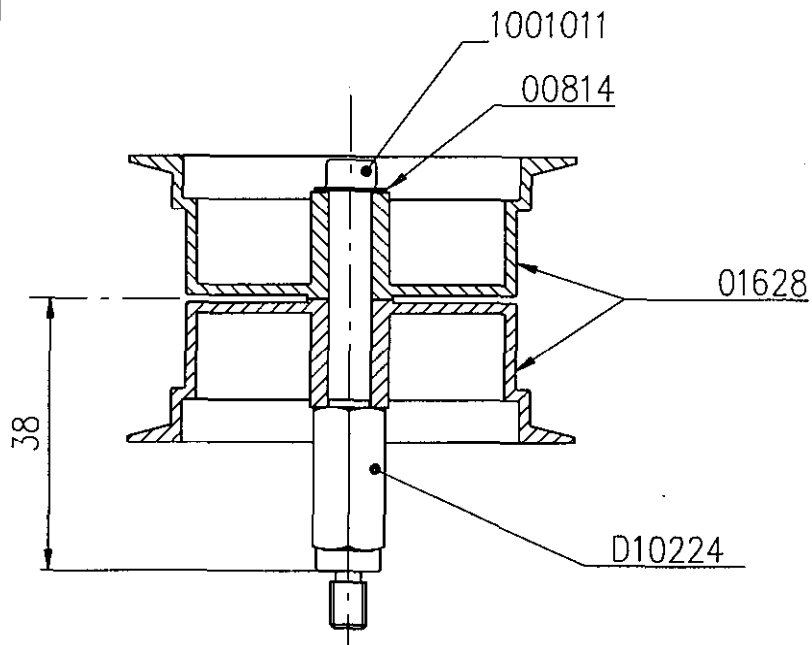


Fig.3

Disegnato	Data	Aggiornato	
M C	16-06-97	05-02-98	Scala

# D O 8 6 6 2

C N R 3 - 3 5 N

Fig.4

Rullo uscita film	Output roller assembly	Galet de sortie film
<ul style="list-style-type: none"> <li>-1001010 - Vite M4x6 UN15931</li> <li>-1001030 - Vite M5x25 UN15931</li> <li>-1051004 - Dado esag.M5 UN15588</li> <li>-1065004 - Rosetta dia.5 UN16592</li> <li>-1066003 - Rosetta dia.5 UN18842</li> <li>-00206 - Rosetta.</li> <li>-00814 - Rosetta</li> <li>-01626 - Semirullo con guide (2pz)</li> <li>-01629/4 - Perno per rullo</li> <li>-CNR135 - Rullo con guide completo *</li> <li>-008507 - Supporto rullo mobile</li> <li>-D08514 - Bussola</li> <li>-009106 - Piastra</li> </ul>	<ul style="list-style-type: none"> <li>-1001010 - M4x6 UN15931 screw</li> <li>-1001030 - M5x25 UN15931 screw</li> <li>-1051004 - M5 UN15588 nut</li> <li>-1065004 - Dia.5 UN16592 washer</li> <li>-1066003 - Dia.5 UN18842 washer</li> <li>-00206 - Washer</li> <li>-00614 - Washer</li> <li>-01628 - Half flanged roller (2pcs)</li> <li>-01629/4 - flanged roller spindle</li> <li>-CNR135 - Flanged roller assembly *</li> <li>-D08507 - Swivel roller bracket</li> <li>-D08514 - Bush</li> <li>-D09106 - Plate</li> </ul>	<ul style="list-style-type: none"> <li>-1001010 - Vis M4x6 UN15931</li> <li>-1001030 - Vis M5x25 UN15931</li> <li>-1051004 - Ecrou M5 UN15588</li> <li>-1065004 - Rondelle dia.5 UN16592</li> <li>-1066003 - Rondelle dia.5 UN18842</li> <li>-00206 - Rondelle</li> <li>-00814 - Rondelle</li> <li>-01628 - Semi-galet guide (2pcs)</li> <li>-01629/4 - Axe galet guide</li> <li>-CNR135 - Galet guide *</li> <li>-D08507 - Support galet pivotant</li> <li>-008514 - Douille</li> <li>-D09106 - Plaque</li> </ul>
* - <u>Vedi la figura 2</u>	* - <u>See Fig.2</u>	* - <u>Voir Fig.2</u>

# D O 8 6 6 3

C N R 3 - 3 5 N

Fig.5

Rullo entrata film	Input roller assembly	Galet d'entrée film
<ul style="list-style-type: none"> <li>-1001010 - Vite M4x6 UN15931</li> <li>-1001025 - Vite M5x12 UN15931</li> <li>-1001030 - Vite M5x25 UN15931</li> <li>-1051004 - Dado esag.M5 UN15588</li> <li>-1065004 - Rosetta dia.5 UN16592</li> <li>-1066003 - Rosetta dia.5 UN18842</li> <li>-00206 - Rosetta</li> <li>-00814 - Rosetta</li> <li>-01073 - Rosetta</li> <li>-01628 - Semirullo con guide (2pz)</li> <li>-01629/4 - Perno per rullo</li> <li>-D03835 - Asta</li> <li>-D08508 - Supporto rullo mobile</li> <li>-D08514 - Bussola</li> <li>-D08633 - Squadretta</li> <li>-D09414 - Spessore per asta</li> </ul>	<ul style="list-style-type: none"> <li>-1001010 - M4x6 UN15931 screw</li> <li>-1001025 - M5x12 UN15931 screw</li> <li>-1001030 - M5x25 UN15931 screw</li> <li>-1051004 - M5 UN15588 nut</li> <li>-1065004 - Dia.5 UN16592 washer</li> <li>-1066003 - Dia.5 UN18842 washer</li> <li>-00206 - Washer</li> <li>-00814 - Washer</li> <li>-01073 - Washer</li> <li>-01628 - Half Ranged roller (2pcs)</li> <li>-01629/4 - Flanged roller spindle</li> <li>-D03835 - Roller bracket</li> <li>-D08508 - Swivel roller bracket</li> <li>-D08514 - Bush</li> <li>-D08633 - Bracket</li> <li>-D09414 - Spacer</li> </ul>	<ul style="list-style-type: none"> <li>-1001010 - Vis M4x6 UN15931</li> <li>-1001025 - Vis M5x12 UN15931</li> <li>-1001030 - Vis M5x25 UN15931</li> <li>-1051004 - Ecrou M5 UN15588</li> <li>-1065004 - Rondelle dia.5 UN16592</li> <li>-1066003 - Rondelle dia.5 UN18842</li> <li>-00206 - Rondelle</li> <li>-00814 - Rondelle</li> <li>-01073 - Rondelle</li> <li>-01626 - Semi-galet guide (2pcs)</li> <li>-01629/4 - Axe galet guide</li> <li>-D03835 - Tige support galet</li> <li>-D08508 - Support galet pivotant</li> <li>-D08514 - Douille</li> <li>-D08633 - Equerre</li> <li>-D09414 - Entretoise</li> </ul>



CNR 3-35N

Rullo uscita film

Output roller assembly

Dis. D09104-3

Assembly  
# D08662

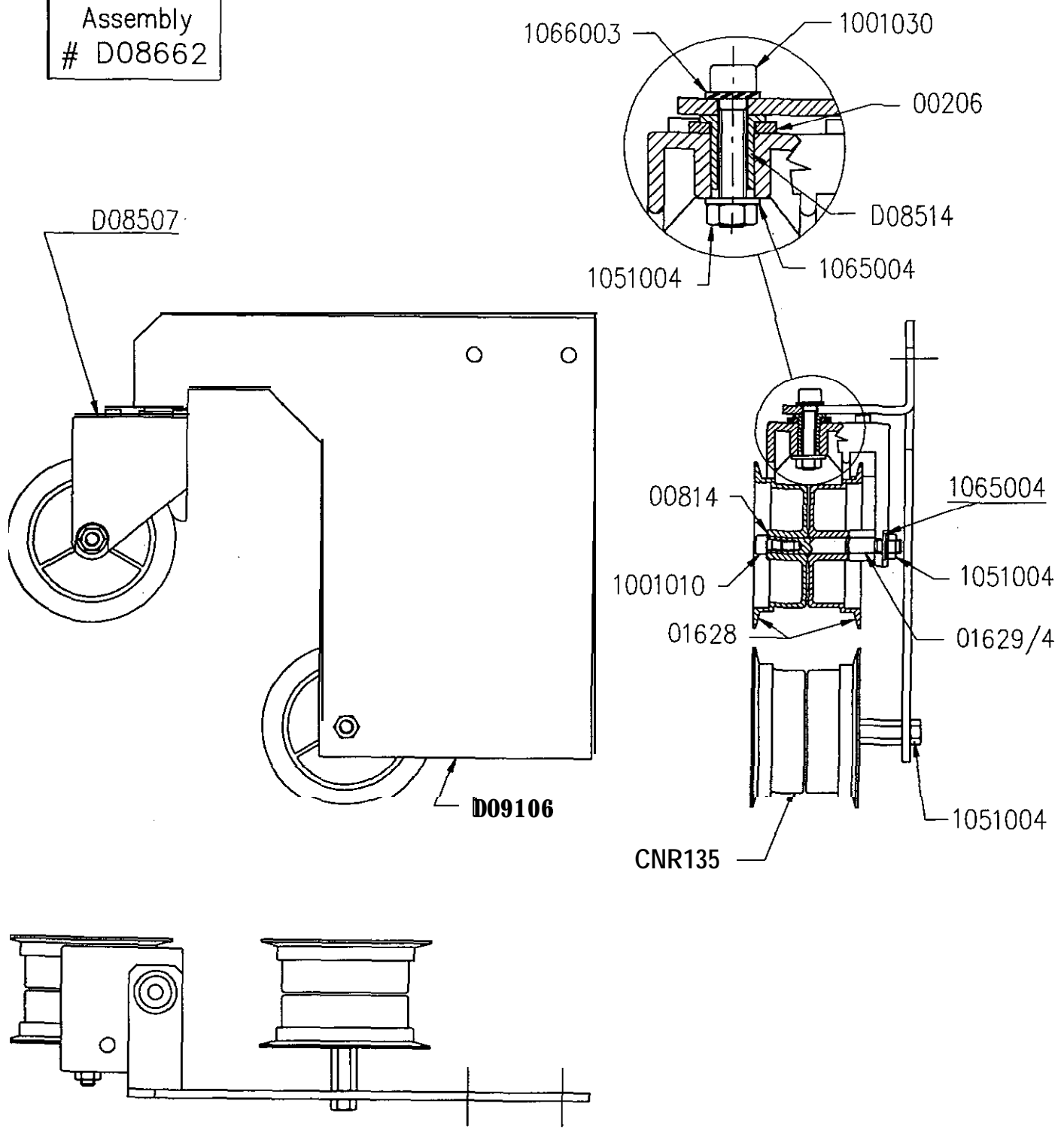


Fig.4

Disegnato	Data	Aggiornato	Scala
MC	16-06-97	E-02-98	



CNR 3-35N

Rullo entrata film

Input roller assembly

Dis. D09104-4

Assembly # D08663

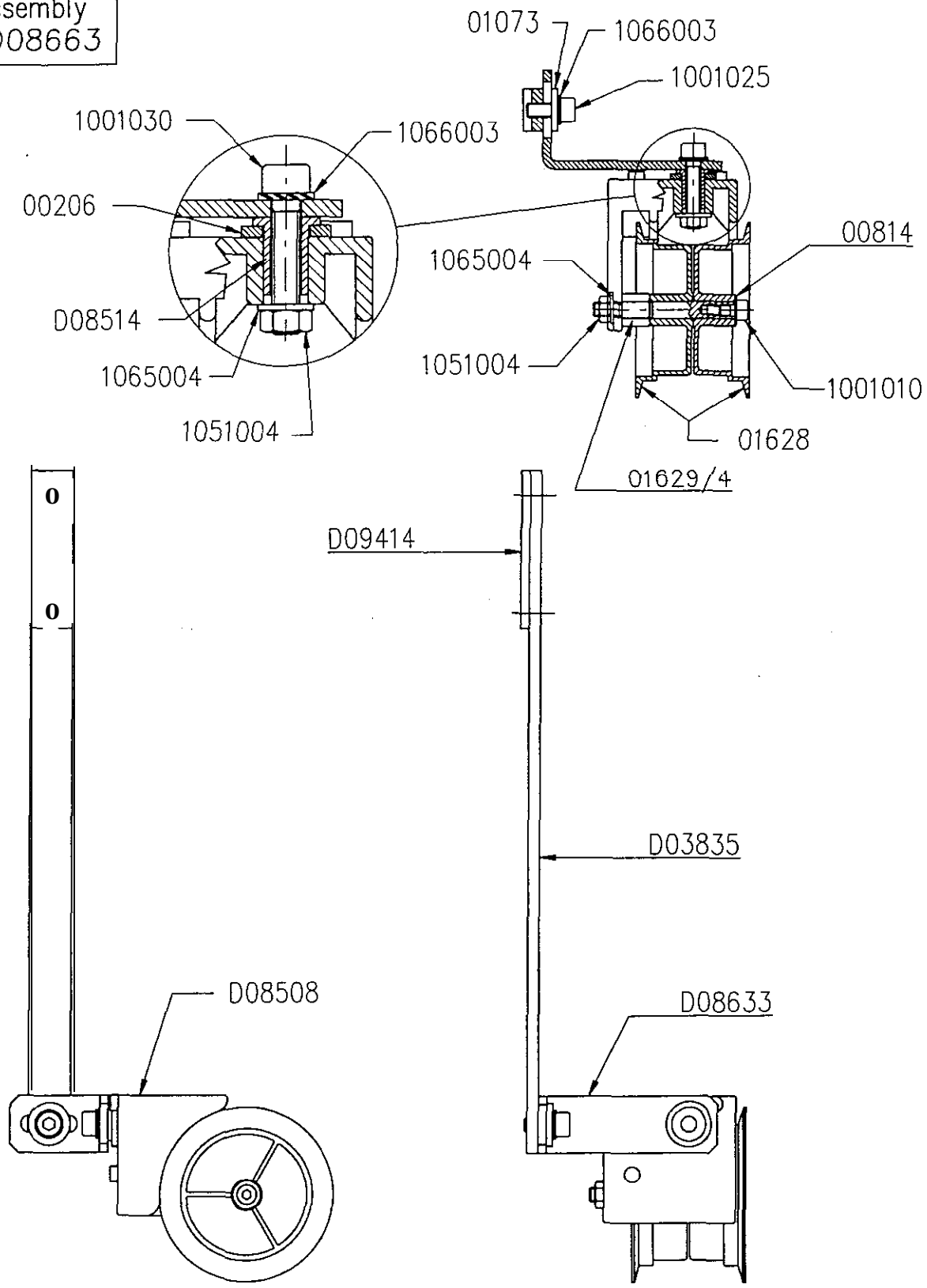


Fig.5

Disegnata	Data	Aggiornato
MC	16-06-07.	

Scala

# D03834

CNR 3-35N

Fig.6

## Rulli fissi entrata film

## Bottom fixed rollers assembly

## Galets fixes d'entrée

-1051004 - **Dado** esag.M5 **UN15588**  
 -CNR135 - Rullo **con guide** completo \*  
 -D03833 - Asta

-1051004 - **M5 UN15588 nut**  
 -CNR135 - **flanged roller assembly** \*  
 -D03833 - **Roller bracket**

-1051004 - Erou **M5 UN15588**  
 -CNR135 - **Galet guide** \*  
 -D03833 - **Tige support galet**

\* - Vedi la figura 2\* - See Fig. 2\* - Voir Fig.2

# D09404

CNR 3-35N

Fig.7

## Rulli guidafilm sul piatto

## Film take-up rollers

## Galets guide

-1001010 - Vite M4x6 **UN15931**  
 -1001030 - Vite M5x25 **UN15931**  
 -1001033 - Vite M5x40 **UN15931**  
 -1051004 - **Dado** esag.M5 **UN15588**  
 -1065004 - **Rosetta** dia.5 **UN16592**  
 -1066003 - **Rosetta** dia.5 **UN18842**  
 -00814 - **Rosetta**  
 -01628 - **Semirullo con guide** (2pz)  
 -01629/4 - **Perno per rullo**  
 -D08507 - **Supporto rullo mobile**  
 -D08508 - **Supporto rullo mobile**  
 -D08514 - **Bussola**  
 -009403 - **Supporto** a forcilla

-1001010 - M4x6 **UN15931 screw**  
 -1001030 - M5x25 **UN15931 screw**  
 -1001033 - M5x40 **UN15931 screw**  
 -1051004 - **M5 UN15588 nut**  
 -1065004 - **Dia.5 UN16592 washer**  
 -1066003 - **Dia.5 UN18842 washer**  
 -00814 - **Washer**  
 -01628 - **Half flanged roller** (2pcs)  
 -01629/4 - **Flanged roller spindle**  
 -D08507 - **Swivel roller bracket**  
 -D08508 - **Swivel roller bracket**  
 -D08514 - **Bush**  
 -D09403 - **U-shaped bracket**

-1001010 - Vis M4x6 **UN15931**  
 -1001030 - Vis M5x25 **UN15931**  
 -1001033 - Vis M5x40 **UN15931**  
 -1051004 - Erou **M5 UN15588**  
 -1065004 - **Rondelle** dia.5 **UN16592**  
 -1066003 - **Rondelle** dia.5 **UN18842**  
 -00814 - **Rondelle**  
 -01628 - **Semi-galet guide** (2pcs)  
 -01629/4 - **Axe galet guide**  
 -D08507 - **Support galet pivotant**  
 -D08508 - **Support galet pivotant**  
 -D08514 - **Douille**  
 -D09403 - **Support**



CNR 3-35N

Rulli fissi entrata film

Bottom fixed rollers assembly

Dis. D09104-5

Assembly

# D03834

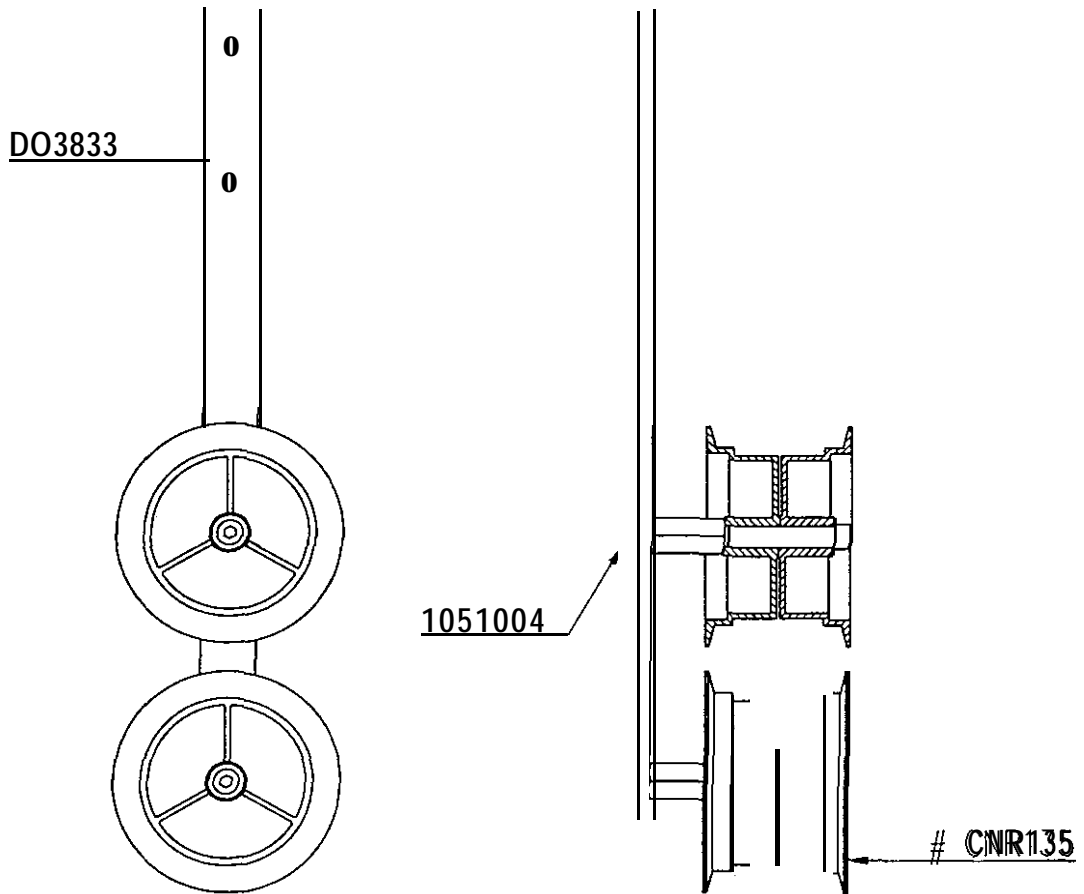


Fig.6

Disegnato	Data	Aggiornato	
MC	17-06-97		Scala



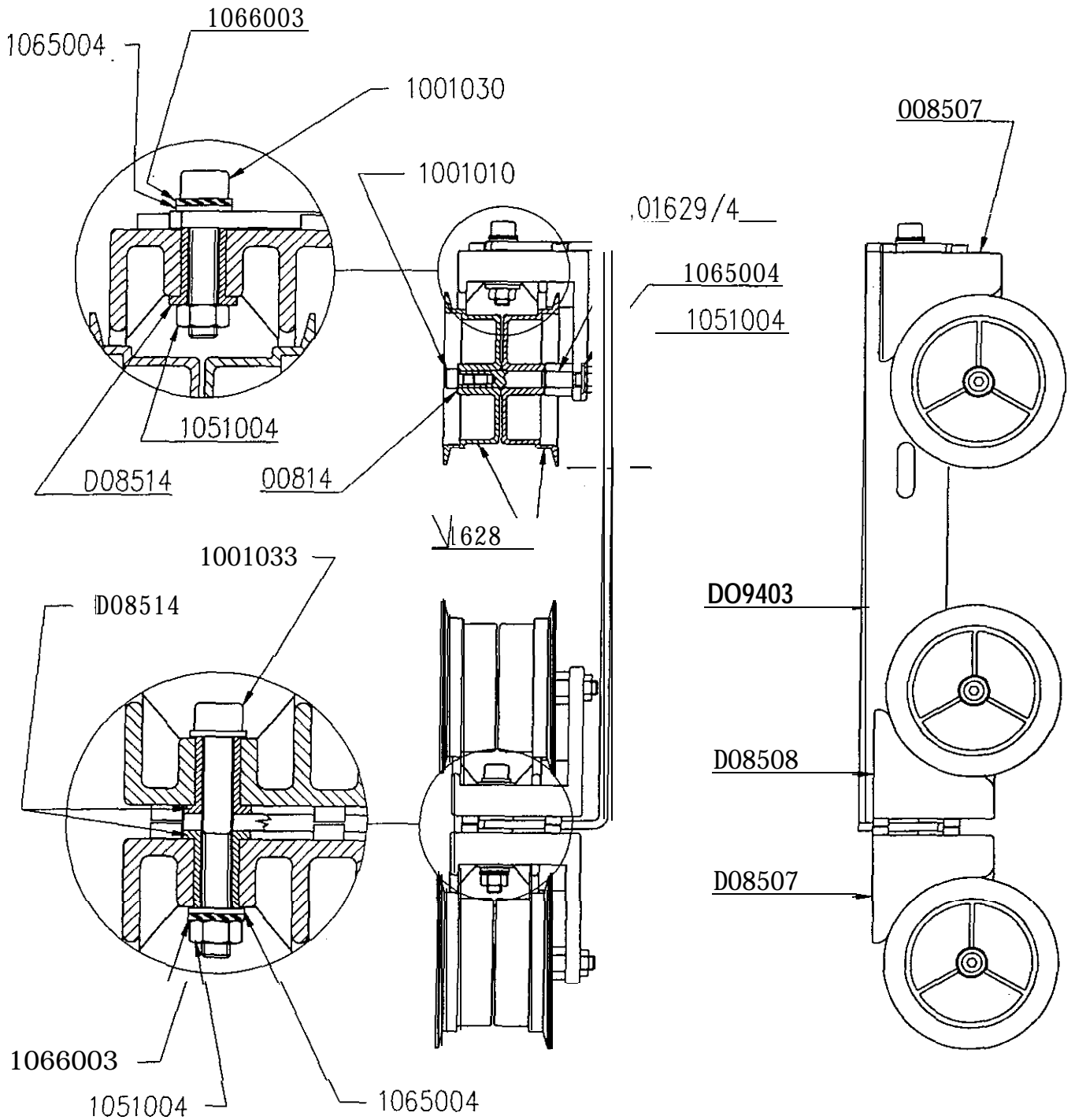
CNR 3-35N

Rulli guidafilm sul piatta

Film take-up rollers

Dis. D09104-

**Assembly**  
**# D09404**



**Fig.7**

Disegnato      Data      Aggiornato

MC      16-06-97'

Scdo

# D08635

CNR 3-35N

Fig.8

## Cursore portarulli

## Roller carriage

## Chariot pour galets

-1051004 - Dado esag.M5 UN1588  
 -2001005 - Anello elastico  
 -2802019 - Manopola  
 -0027b - Molla  
 -01073 - Rosetta  
 -D02120 - Rullino guida  
 -D02121 - Perno  
 -002152 - Innesso  
 -002154 - Vite per molla  
 -D08632 - Cursore

-1051004 - M5 UN1588 nut  
 -2001005 - Circlip  
 -2802019 - Knurled knob  
 -0027b - Spring  
 -01073 - Washer  
 -002120 - Guide roller  
 -D02121 - Spindle  
 -002152 - Plunger  
 -D02154 - Spring screw  
 -D08632 - Carriage

-1051004 - Ecrou M5 UN1588  
 -2001005 - Clips elastique  
 -2802019 - Poignee  
 -0027b - Ressort  
 -01073 - Rondelle  
 -002120 - Galet guide  
 -002121 - Axe  
 -002152 - Pointeau  
 -002154 - Vis pour ressort  
 -008632 - Chariot

CNR 3-35N

Fig.9

## Sella motore

## Motor support

## Support moteur

1001025 - Vite M5x12 UN15931  
 1001027 - Vite M5x16 UN15931  
 1051004 - Dado esag.M5 UN15588  
 1056005 - Dado autobl.M5 UN15588  
 1066003 - Rosetta dia.5 UN18842  
 1601001 - Linguetta 3x3x10 UN16604  
 2001008 - Anello elastico  
 2835002 - Gommio antivibrante  
 3007002 - Gabbia a rullini  
 3008002 - Ralla (2pz)  
 3050010 - Boccola autolubrificante  
 3050003 - Boccola autolubrificante  
 00706.5 - Rosetta  
 00857 - Rosetta  
 01386 - Rosetta  
 01456 - Rosetta  
 8V87 - Rosetta  
 D06461 - Rosetta  
 D07614 - Perno  
 D07616 - Blocchetto guido  
 D07624 - Perno  
 D07625 - Vite tendimolla  
 D07627 - Mozzo  
 D07631 - Staffa  
 D07635 - Leva  
 D07640 - Perno con maniglia  
 D07641 - Molla  
 D07642 - Coprimolla

-1001025 - M5x12 UN15931 screw  
 -1001027 - M5x16 UN15931 screw  
 -1051004 - M5 UN15588 nut  
 -1056005 - M5 UN15588 locknut  
 -1066003 - Dia.5 UN18842 washer  
 -1601001 - Key 3x3x10 UN16604  
 -2001008 - Circlip  
 -2835002 - Rubber shock absorber  
 -3007002 - Roller axial cage  
 -3008002 - Axial bearing ring (2pcs)  
 -3050010 - Bushing  
 -3050003 - Bushing  
 -00706.5 - Washer  
 -00857 - Washer  
 -01386 - Washer  
 -01456 - Washer  
 -8V87 - Washer  
 -D06461 - Washer  
 -D07614 - Spindle  
 -D07616 - Block  
 -D07624 - Spindle  
 -D07625 - Pull spring screw  
 -D07627 - Hub  
 -D07631 - Support  
 -D07635 - Lever  
 -D07640 - Handle with rod  
 -D07641 - Spring  
 -D07642 - Spring cover

-1001025 - Vis M5x12 UN15931  
 -1001027 - Vis M5x16 UN15931  
 -1051004 - Ecrou M5 UN15588  
 -1056005 - Ecrou de sùreté M5 UN15588  
 -1066003 - Rondelle dia.5 UN18842  
 -1601001 - Languelette 3x3x10 UN16604  
 -2001008 - Clips elastique  
 -2835002 - Bague en caoutchouc  
 -3007002 - Butée à billes  
 -3008002 - Butée (2pcs)  
 -3050010 - Douille  
 -3050003 - Douille  
 -00706.5 - Rondelle  
 -00857 - Rondelle  
 -01386 - Rondelle  
 -01456 - Rondelle  
 -8V87 - Rondelle  
 -D06461 - Rondelle  
 -D07614 - Axe  
 -D07616 - Bloc  
 -D07624 - Axe  
 -D07625 - Vis tendeuse ressort  
 -D07627 - Moyeu  
 -D07631 - Support  
 -D07635 - Levier  
 -D07640 - Poignee avec axe  
 -D07641 - Ressort  
 -D07642 - Protection pour ressort



CNR 3-35N

Cursore portarulli

Rollers carriage

Dis. D09104-7

Assembly  
# D08635

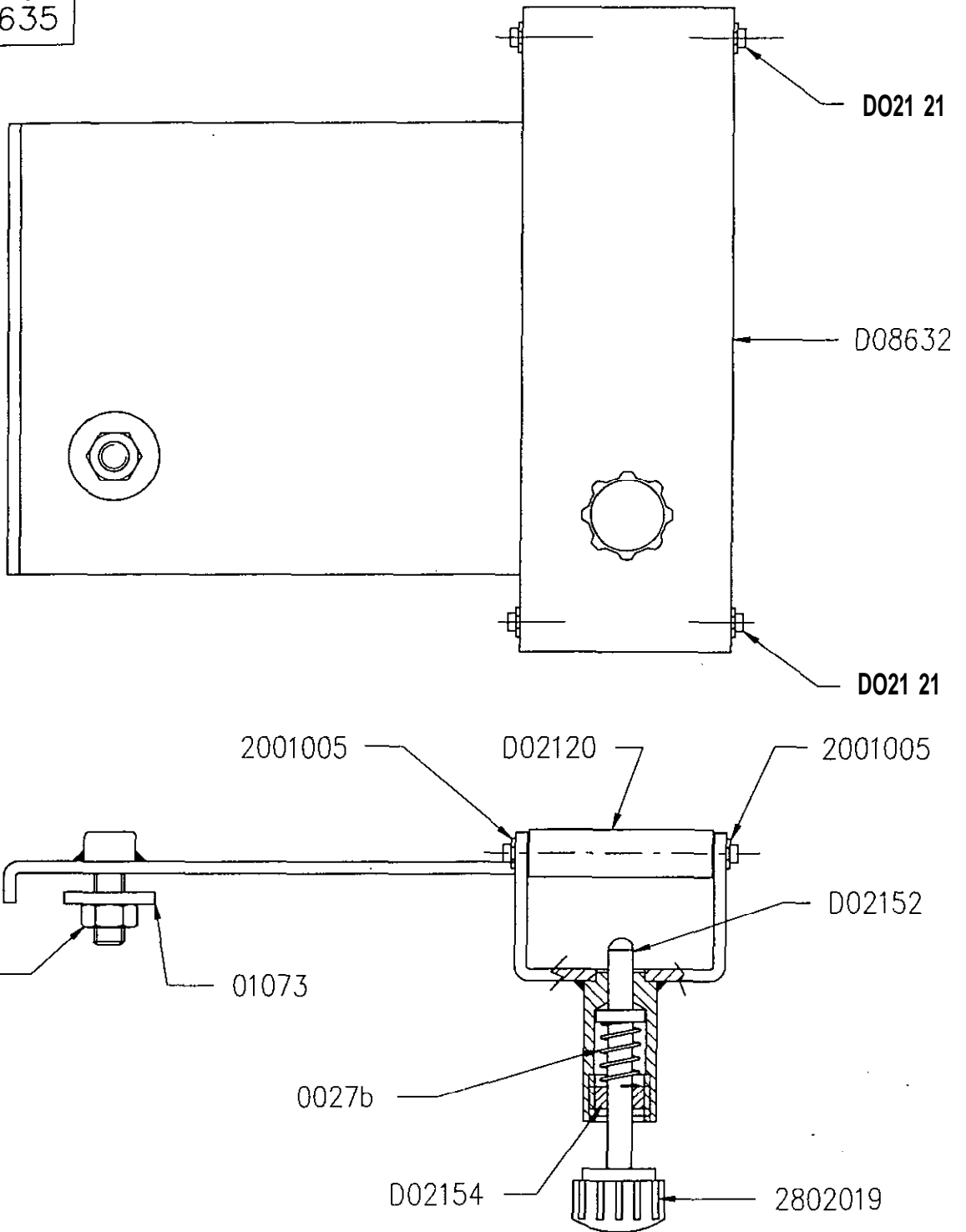


Fig.8

Disegnato	Data	Agglomerato
MC	16-06-97	

Scala

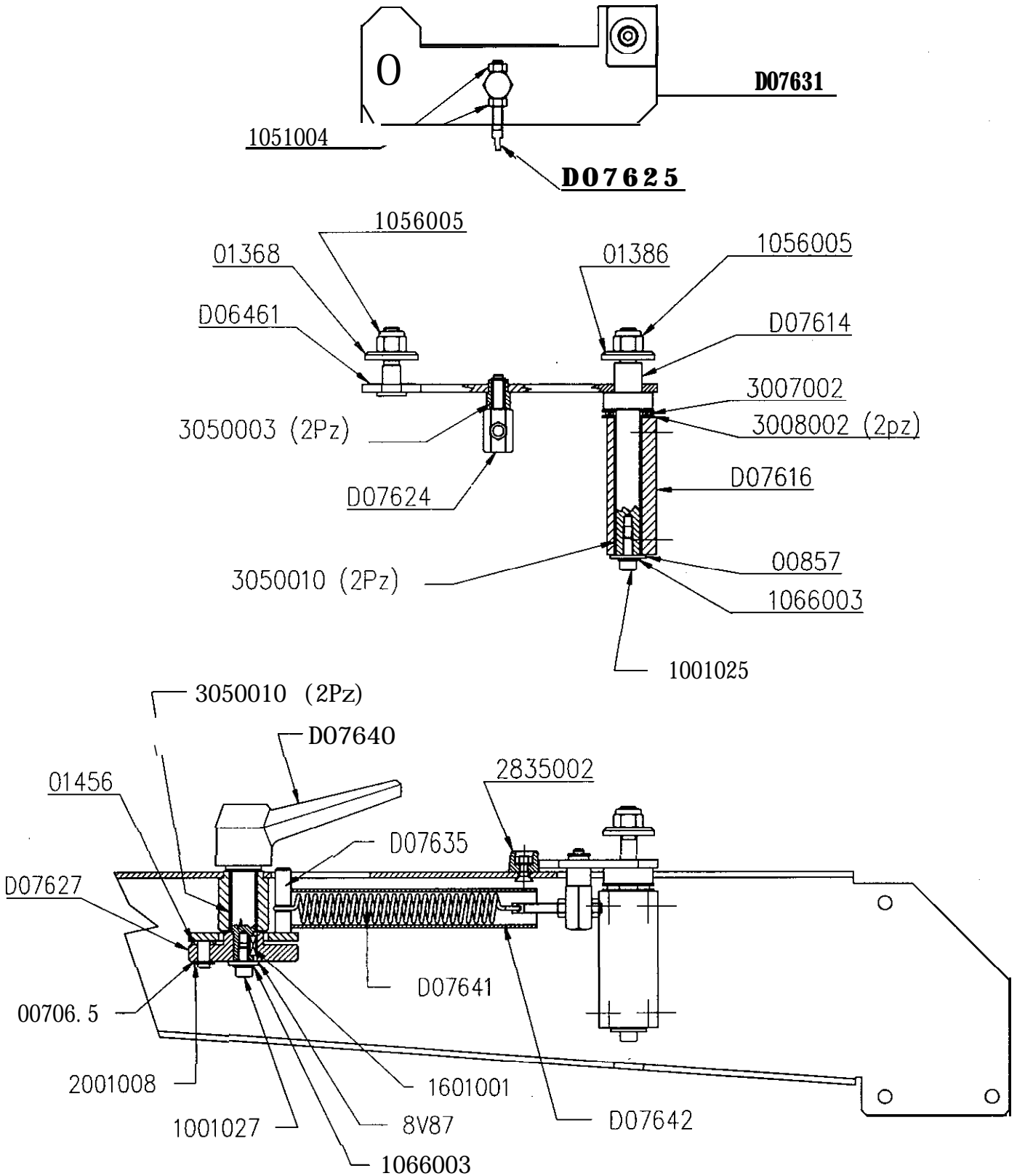


Fig.9

Disegnato	Data	Aggiornato	Scala
MC	17-06-97	23-06-98	

Gruppo motore	Motor assembly	Moteur
1001012 - Vite M4x10 UN15931	-1001012 - M4x10 UN15931 screw	-1001012 - Vis M4x10 UN15931
1003014 - Vite M5x16 UN15933	-1003014 - M5x16 UN15933 screw	-1003014 - Vis M5x16 UN15933
1004013 - Vite M5x8 UN15923	-1004013 - M5x8 UN15923 screw	-1004013 - Vis M5x8 UN15923
1065003 - Rosetta dia.4 UN16592	-1065003 - Dia.4 UN16592 washer	-1065003 - Rondelle dia.4 UN16592
3402007 - Motore	-3402007 - Mtor	-3402007 - Moteur
3410002 - Spazzola motore (2pz)	-3410002 - Brush with brush-holder(2pcs)	-3410002 - Brosse avec porte-brosse(2pcs)
D08957 - Mozzo per puleggia	-D08957 - Pulley hub	-D08957 - Moyeu
D08958 - Rondella bloccaggio	-D08958 - Washer	-D08958 - Rondelle
008960 - Puleggia	-D08960 - Pulley	-D08960 - Galet

# DO9108

CNR 3-35N

Fig.1 1

Braccio compensatore	Speed control arm assembly	Bras de regulation de vitesse
-1001001 - Vite M3x6 UN15931	-1001001 - M3x6 UN15931 screw	-1001001 - Vis M3x6 UN15931
-1001006 - Vite M3x16 UN15931	-1001006 - M3x16 UN15931 screw	-1001006 - Vis M3x16 UN15931
-1001010 - Vite M4x6 UN15931	-1001010 - M4x6 UN15931 screw	-1001010 - Vis M4x6 UN15931
-1001012 - Vite M4x10 UN15931	-1001012 - M4x10 UN15931 screw	-1001012 - Vis M4x10 UN15931
-1001013 - Vite M4x12 UN15931	-1001013 - M4x12 UN15931 screw	-1001013 - Vis M4x12 UN15931
-1001024 - Vite M5x10 UN15931	-1001024 - M5x10 UN15931 screw	-1001024 - Vis M5x10 UN15931
-1001030 - Vite M5x25 UN15931	-1001030 - M5x25 UN15931 screw	-1001030 - Vis M5x25 UN15931
-1001091 - Vite M3x30 UN15931	-1001091 - M3x30 UN15931 screw	-1001091 - Vis M3x30 UN15931
-1004003 - Vite M4x6 UN15923	-1004003 - M4x6 UN15923 screw	-1004003 - Vis M4x6 UN15923
-1051002 - Dado esag.M3 UN15588	-1051002 - M3 UN15588 nut	-1051002 - Ecrou M3 UN15588
-1051004 - Dado esag.M5 UN15588	-1051004 - M5 UN15588 nut	-1051004 - Ecrou M5 UN15588
-1065002 - Rosetta dia.3 UN16592	-1065002 - Dia.3 UN16592 washer	-1065002 - Rondelle dia.3 UN16592
-1065004 - Rosetta dia.5 UN16592	-1065004 - Dia.5 UN16592 washer	-1065004 - Rondelle dia.5 UN16592
-1066003 - Rosetta dia.5 UN18842	-1066003 - Dia.5 UN18842 washer	-1066003 - Rondelle dia.5 UN18842
-2003005 - Anello elastico	-2003005 - Circlip	-2003005 - Clips elastique
-3003007 - Cuscinetto a sfere	-3003007 - Ball bearing	-3003007 - Roulement a billes
-3007001 - Gabbia a rullini	-3007001 - Roller axial cage	-3007001 - Butée a billes
-3008001 - Ralla (2pz)	-3008001 - Axial bearing ring (2pcs)	-3008001 - Butée (2pcs)
-3606047 - Resistenza 15K 1/4W	-3606047 - 15Kohm 1/4W resistor	-3606047 - Resistance 15K 1/4W
-3606053 - Resistenza 47K 1/4W	-3606053 - 47Kohm 1/4W resistor	-3606053 - Resistance 47K 1/4W
-3811022 - Patenziometro 50K	-3811022 - 50K potentiometer	-3811022 - Potentiometre 50K
-00814 - Rosetta	-00814 - Washer	-00814 - Rondelle
-01628 - Semirullo can guide (2pz)	-01628 - Half flanged roller (2pcs)	-01628 - Semi-galet guide (2pcs)
-01629/4 - Perno per rullo	-01629/4 - Flanged roller spindle	-01629/4 - Axe galet guide
-01830 - Rosetta	-01830 - Washer	-01830 - Rondelle
-CPC184 - Supporto	-CPC184 - Arm support bracket	-CPC184 - Support bras oscillant
-CPC185 - Rosetta reggispinta	-CPC185 - Washer	-CPC185 - Butée
-CPC192 - Anello	-CPC192 - Ring	-CPC192 - Bague
-CPC194 - Microinterruttore	-CPC194 - Microswitch	-CPC194 - Micro-interrupteur
-D02344 - Morsettiera	-D02344 - Terminal board	-D02344 - Barrette de connection borni
-D02439 - Microinterruttore	-D02439 - Microswitch	-D02439 - Micro-interrupteur
-D03182 - Proteziane	-D03182 - Cover	-D03182 - Protection
-D04948 - Mensola	-D04948 - Block with shack absorber	-D04948 - Support avec amortissante
-D04949 - Ghiera tendimolla	-D04949 - Spring loading disc	-D04949 - Bague tendeur de ressort
-D04951 - Alberino	-D04951 - Shaft	-D04951 - Axe
-D04962 - Molla	-D04962 - Spiral spring	-D04962 - Ressort en spirale
-D08344 - Distanziale	-D08344 - Spacer	-D08344 - Entretoise
-D08346 - Giunto	-D08346 - Joint	-D08346 - Flector d'accouplement
-D08508 - Supporto rullo mobile	-D08508 - Swivel roller bracket	-D08508 - Support galet pivotant
-008514 - Bussola	-008514 - Bush	-D08514 - Douille
-D08515 - Braccio	-D08515 - Arm	-D08515 - Bras



CNR 3-35N

Gruppo motore

Motor assembly

Dis. D091 04-

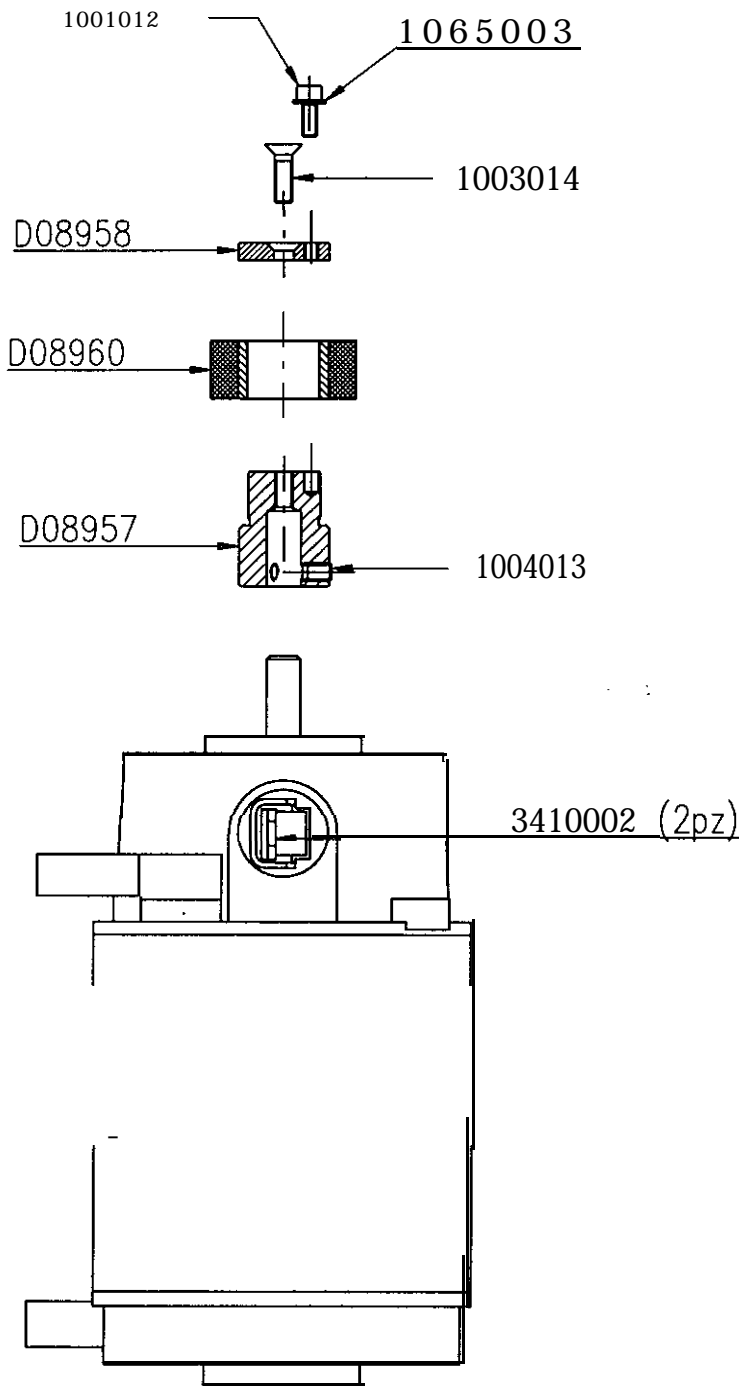


Fig.1 0

Disegnato	Data	Aggiornato	
MC	18-06-97	18-02-98	Scala



CNR 3-35N

Braccio compensatore

Speed control arm assembly

Dis. D09104-10

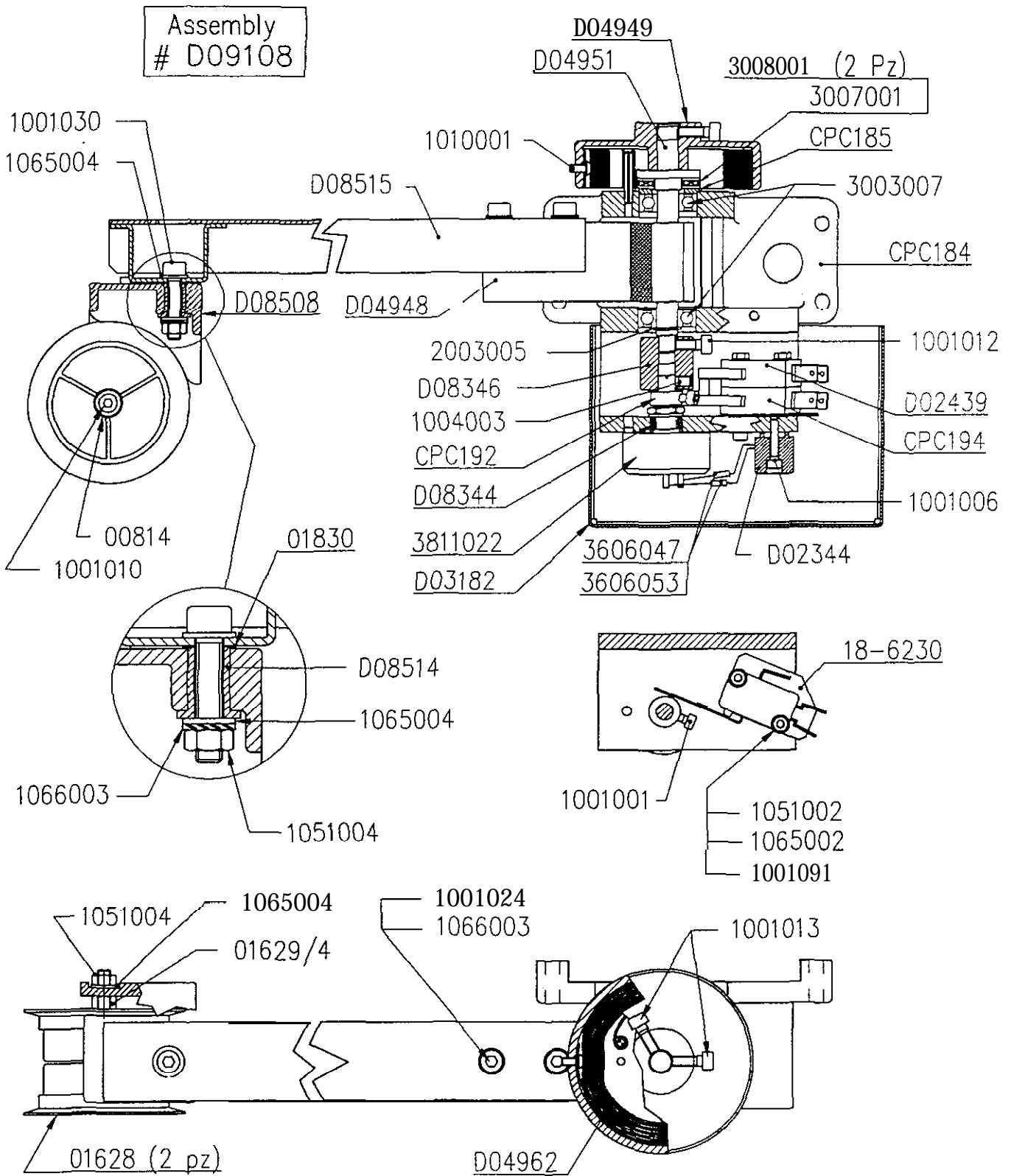


Fig.1 1

Disegnato	Data	Aggiornato	
MC	18-06-97		Scala

Con trollo tensione film	Film tension safety switch	Contrôle tension film
<ul style="list-style-type: none"> <li>-1001004 - Vite M3x12 UN15931</li> <li>-1001011 - Vite M4x8 UN15931</li> <li>-1001017 - Vite M4x20 UN15931</li> <li>-1051002 - Dado esag.M3 UN15588</li> <li>-1065002 - Rosetta dia.3 UN16592</li> <li>-1066002 - Rosetta dia.4 UN18842</li> <li>-1068009 - Rosetta nylon</li> <li>-1068011 - Manicotto</li> <li>-2832023 - Scrocco magnetico</li> <li>-00814 - Rosetta</li> <li>-01628 - Semirullo con guide(2pz)</li> <li>-01629/4 - Perno per rullo</li> <li>-CPC130 - Rullino sicurezza(Assieme)</li> <li>-D09044 - Blocchetto</li> <li>-010546 - Piastrina</li> </ul>	<ul style="list-style-type: none"> <li>1001004 - M3x12 UN15931 screw</li> <li>1001011 - M4x8 UN15931 screw</li> <li>1001017 - M4x20 UN15931 screw</li> <li>1051002 - M3 UN15588 nut</li> <li>1065002 - Dia.3mm UN16592 washer</li> <li>1066002 - Dia.4mm UN18842 washer</li> <li>1068009 - Nylon washer</li> <li>1068011 - Sleeve</li> <li>2832023 - Magnetic latch</li> <li>00814 - Washer</li> <li>-01628 - Half flanged roller (2pcs)</li> <li>-01629/4 - Flanged roller spindle</li> <li>-CPC130 - Safety roller assembly</li> <li>-D09044 - Block</li> <li>-D10546 - Plate</li> </ul>	<ul style="list-style-type: none"> <li>-1001004 - Vis M3x12 UN15931</li> <li>-1001011 - Vis M4x8 UN15931</li> <li>-1001017 - Vis M4x20 UN15931</li> <li>-1051002 - Ecrou M3 UN15588</li> <li>-1065002 - Rondelle dia.3 UN16592</li> <li>-1066002 - Rondelle dia.4 UN18842</li> <li>-1068009 - Rondelle denylon</li> <li>-1068011 - Manchon intermediaire</li> <li>-2832023 - Serrure magnetique</li> <li>-00814 - Rondelle</li> <li>-01628 - Semi-galet guide (2pcs)</li> <li>-01629/4 - Axe galet guide</li> <li>-CPC130 - Galet de sécurité</li> <li>-D09044 - Bloc</li> <li>-D10546 - Plaquette</li> </ul>

Apparecch. elettriche	Control box assembly	Coffret de commande électrique
<ul style="list-style-type: none"> <li>-1001006 - Vite M3x16 UN15931</li> <li>-1001010 - Vite M4x6 UN15931</li> <li>-1001023 - Vite M5x8 UN15931</li> <li>-1005003 - Vite M4x12 UN15925</li> <li>-1014006 - Vite M3x8 UN16109</li> <li>-1019002 - Vite 2,9x9,5 UN16954</li> <li>-1065003 - Rosetta dia.4 UN1659</li> <li>-1065004 - Rosetta dia.5 UN1659</li> <li>-1066003 - Rosetta dia.5 UN1884</li> <li>-3612731 - Presa 10/16A 250V</li> <li>-3614039 - Distanziale</li> <li>-3620210 - Morsetto di terra</li> <li>-3620225 - Morsettiera</li> <li>-3623001 - Portafusibile</li> <li>-3625018 - Fusibile 5A 250V</li> <li>-3803008 - Interruttore ON/OFF</li> <li>-3823222 - Varistore</li> <li>-D09160 - Scheda velocità</li> <li>-D09800 - Scheda connettori</li> <li>-D10298 - Filtro rete</li> <li>-D10550 - Microinterruttore</li> <li>-D10810 - Scheda di fondo</li> </ul>	<ul style="list-style-type: none"> <li>1001006 - M3x16 UN15931 screw</li> <li>1001010 - M4x6 UN15931 screw</li> <li>1001023 - M5x8 UN15931 screw</li> <li>1005003 - M4x12 UN15925 screw</li> <li>1014006 - M3x8 UN16109 screw</li> <li>1019002 - Dia.2,9x9,5 UN16954 screw</li> <li>1065003 - Dia.4 UN16592 washer</li> <li>1065004 - Dia.5 UN16592 washer</li> <li>1066003 - Dia.5 UN18842 washer</li> <li>3612731 - Female 10/16A connector</li> <li>3614039 - Spacer</li> <li>3620210 - Ground post</li> <li>3620225 - Terminal board</li> <li>3623001 - Fuse holder</li> <li>3625018 - 6, 3x32 5A 250V fuse</li> <li>3803008 - ON/OFF switch</li> <li>3823222 - Varistor</li> <li>D09160 - Speed card</li> <li>D09800 - Connectors card</li> <li>D10298 - Network filter</li> <li>D10550 - Microswitch</li> <li>D10810 - Wred card</li> </ul>	<ul style="list-style-type: none"> <li>-1001006 - Vis M3x16 UN15931</li> <li>-1001010 - Vis M4x6 UN15931</li> <li>-1001023 - Vis M5x8 UN15931</li> <li>-1005003 - Vis M4x12 UN15925</li> <li>-1014006 - Vis M3x8 UN16109</li> <li>-1019002 - Vis 2,9x9,5 UN16954</li> <li>-1065003 - Rondelle diam 4 UN16592</li> <li>-1065004 - Rondelle diam 5 UN16592</li> <li>-1066003 - Rondelle diam 5 UN18842</li> <li>-3612731 - Prise universelle 10/16A 250V</li> <li>-3614039 - Entretoise</li> <li>-3620210 - Borne de masse</li> <li>-3620225 - Barrette de connection bonier</li> <li>-3623001 - Porte-fusible</li> <li>-3625018 - Fusible 6,3x32 5A</li> <li>-3803008 - Interrupteur ON/OFF</li> <li>-3823222 - Varistore</li> <li>-D09160 - Circuit de contrôle de vitesse</li> <li>-D09800 - Circuit connecteur</li> <li>-D10298 - Filtre</li> <li>-D10550 - Micro-interrupteur</li> <li>-D10810 - Fiche câblée</li> </ul>



CNR 3-35N

Rulli controllo tensione film

Film tension safety switch

Dis. D09104-11

Assembly  
# D10548

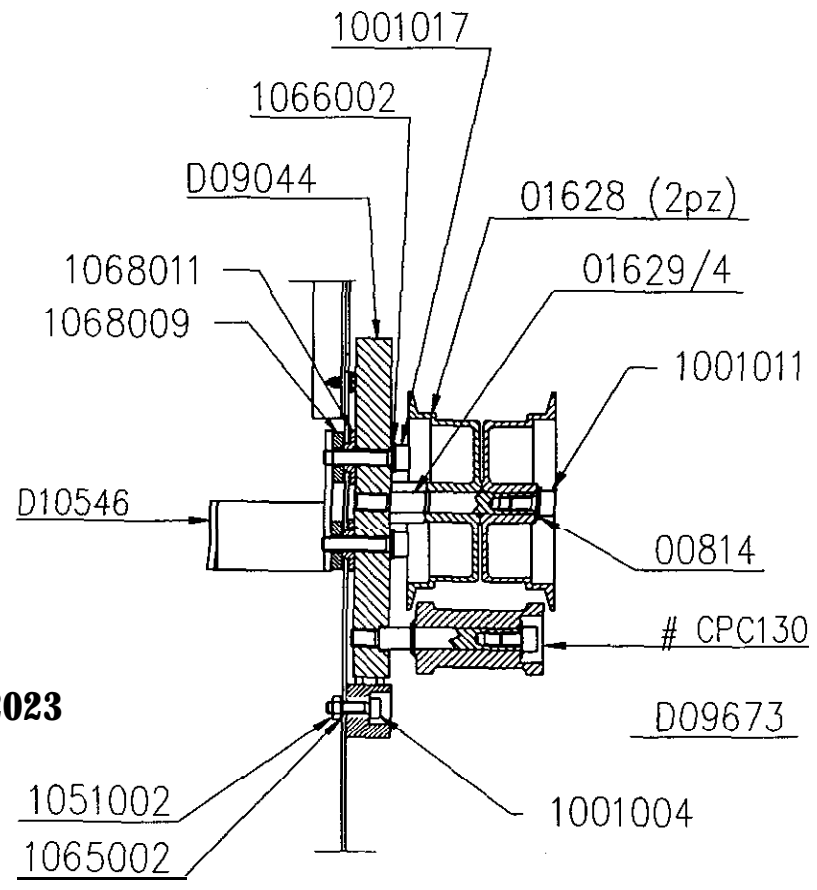
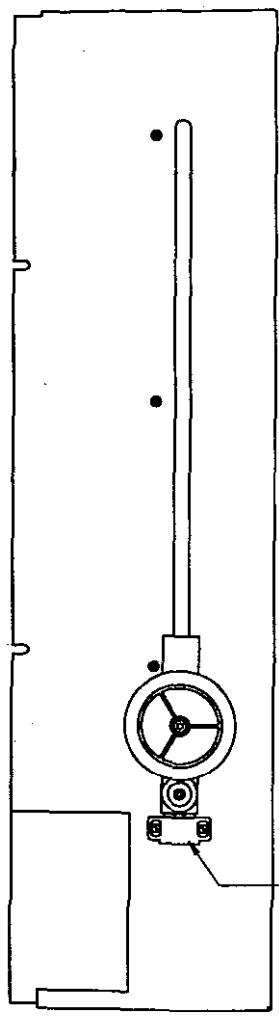


Fig.1 2

Disegnato	Data	Aggiornato	Scala
MC	17-07-98		



CNR 3-35N

Apparecchiature elettriche

Control box assembly

Di s.D09104-12

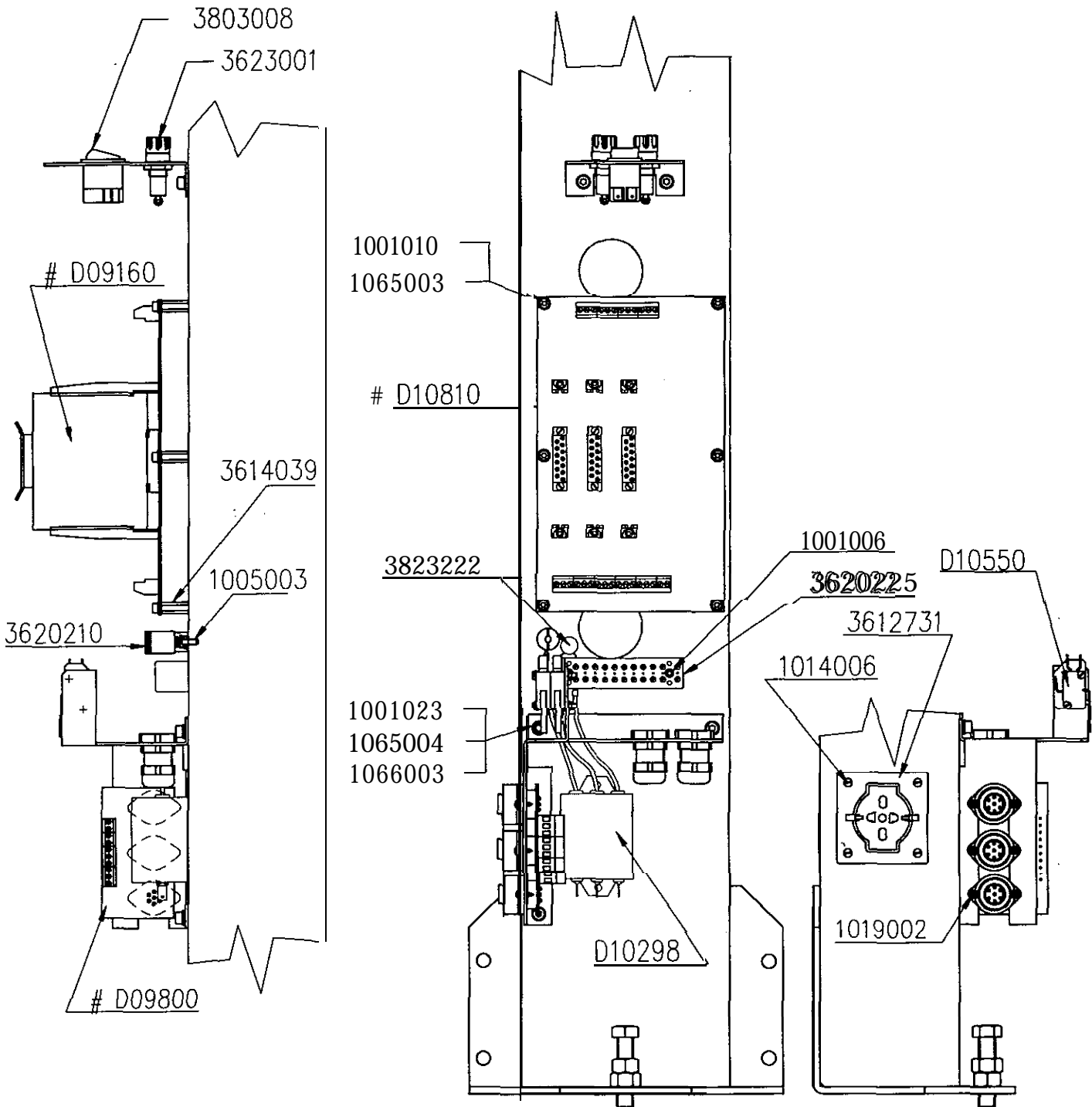


Fig.12 bis

Disegnato	Data	Aggiornato	
MC	M 06-97	14-12-98	Scala

# D08624

CNR 3-35N

Fig.1 3

Luce piatto

Platter light

Lampe du plan du travail

-1001003 - Vite M3x10 UN15931  
 -1051002 - Dado esag. MB UN15588  
 -1054001 - Dado cieco MB UN15721  
 -1065002 - Rosetta dia.3 UN16592  
 -3611006 - Lampada E14 3W 250V  
 -3628020 - Portalampada  
 -008623 - Protezione

-1001003 - M3x10 UN15931 screw  
 -1051002 - MB UN15588 nut  
 -1054001 - MB UN15721 nut  
 -1065002 - Dia.3 UN16592 washer  
 -3611006 - 250V 3W Mignon lamp  
 -3628020 - Lamp holder  
 -D08623 - Lamp cover

-1001003 - Vis M3x10 UN15931  
 -1051002 - Ecrou MB UN15588  
 -1054001 - Ecrou MB UN15721  
 -1065002 - Rondelle dia.3 UN16592  
 -3611006 - Lampe E14 3W 250V  
 -3628020 - Porte-lampe  
 -008623 - Couvercle

# D02450

CNR 3-35N

Fig.1 4

Piatto raccoglifilm

Platter assembly

Plateau

-1017004 - Vite M4x12 DIN965  
 -2004028 - Anello elastico  
 -3002021 - Cuscinetto a sfere  
 -3012011 - Cuscinetto a rulli  
 -CNR408 - Distanziale  
 -CNR409 - Rosetta  
 -D02451 - Supporto disco  
 -D02624 - Disco portante

-1017004 - M4x12 DIN965 screw  
 -2004028 - Circlip  
 -3002021 - Radial bearing  
 -3012011 - Taper roller bearing  
 -CNR408 - Bearing spacer  
 -CNR409 - Bearing washer  
 -D02451 - Platter support  
 -D02624 - Plotter

-1017004 - Vis M4x12 DIN965  
 -2004028 - Clips elastique  
 -3002021 - Roulement à billes  
 -3012011 - Roulement à galets  
 -CNR408 - Entretoise roulement  
 -CNR409 - Rondelle  
 -D02451 - Support disque  
 -D02624 - Disque



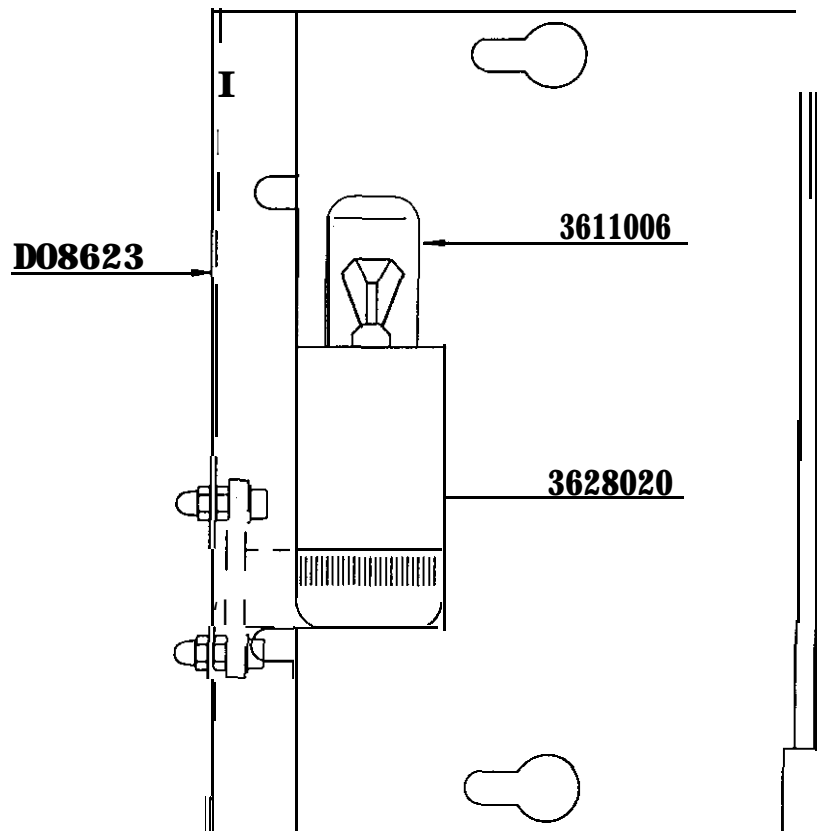
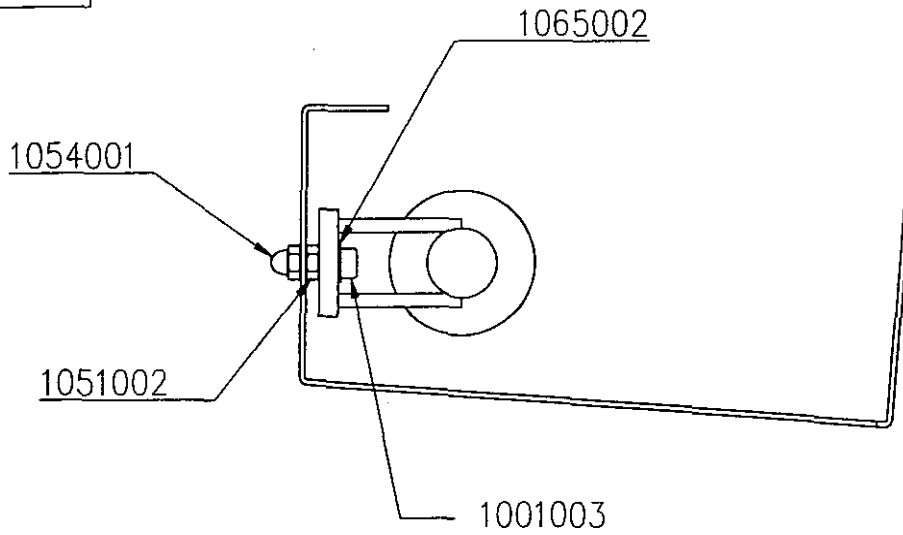
**CNR 3-35N**

Luce piatto

Platter light

Dis. D09104-13

Assembly  
# D08624



**Fig. 13**

Disegnato	Data	Aggiornato	
MC	18-06-97		

Scala



CNR 3-35N

Piatto raccoglifilm

Platter assembly

Dis. D09104-14

Assembly  
# D02450

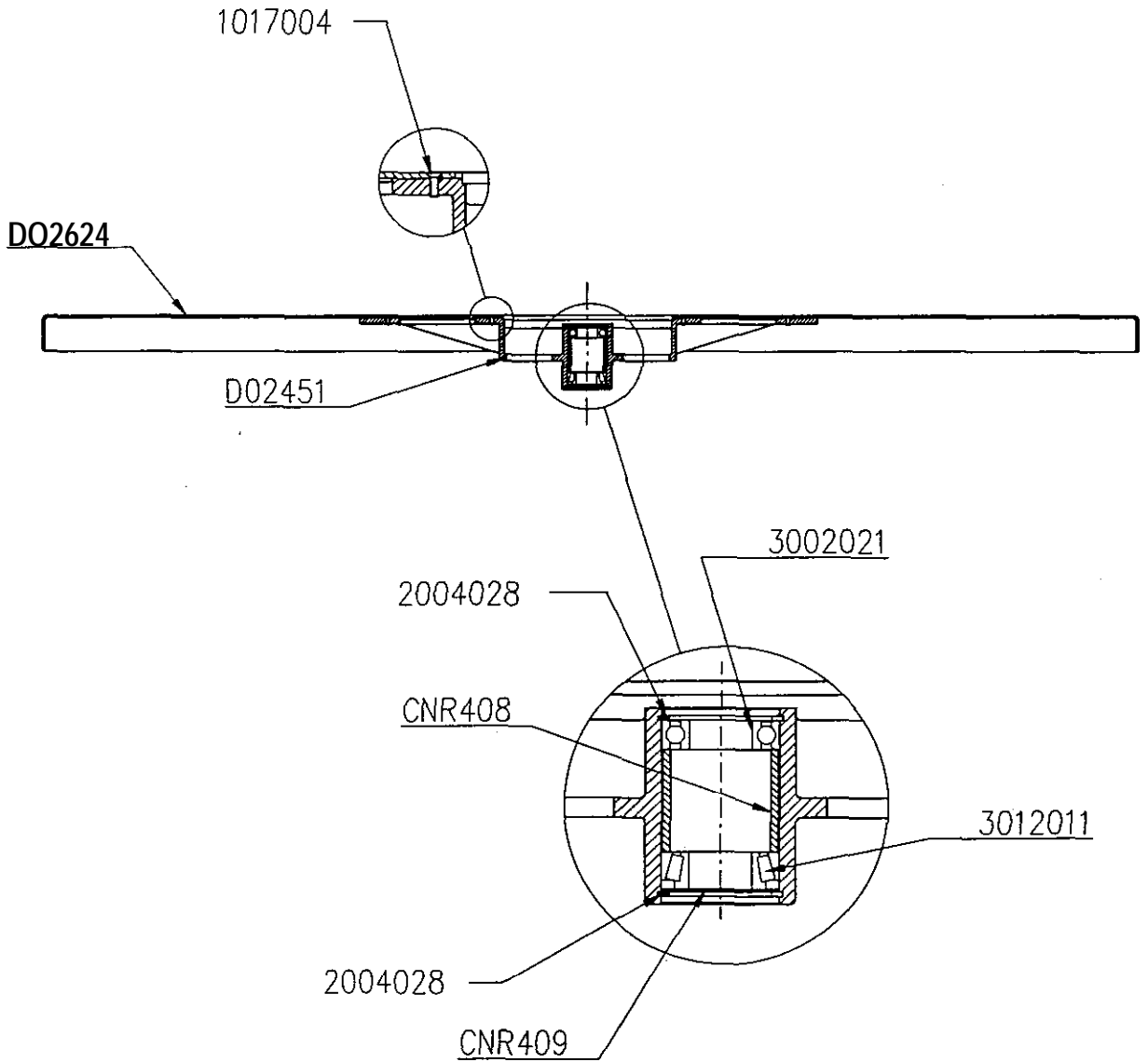


Fig.1 4

Disegnato	Data	Aggiornato
MC	16-06-97	

Scala

# CNR350	CNR 3 - 35 N	Fig.1 5
Dispositivo comando motore	Film pay-out assembly	Unité de régulation du film
-1001002 - Vite M3x8 UN15931 -1001012 - Vite M4x10 UN15931 -1007002 - Vite M3x6 UN15929 -1019002 - Vite 2,9x9,5 UN16954 -1801009 - Anello di tenuta -2001008 - Anello elastico -1065003 - Rosetta dia.3 UN16592 -1065003 - Rosetta dia.4 UN16592 -1066001 - Rosetta dia.3 UN16842 -1066002 - Rosetta dia.4 UN18842 -3612504 - Spina 6 poli -00814 - Rosetta -01181 - Rullo con guide -01552 - Rullo piano -01555 - Rullo con guide -01931 - Rosetta -CNR310 - Perno per rullo piano -CNR314 - Perno per rullo con guide -CNR318 - Perno per rullo inclinato -CNR320 - Perno per rullo piano -CNR322 - Piastra supporto rullo -CNR344 - Asta -CNR348 - Molla -CNR353 - Supporto potenziometro -CPC409 - Banderuola destra -CPC410 - Banderuola sinistra -CPC413 - Rullino -D01139 - Potenzimetro (Assieme)	-1001002 - M3x8 UN15931 screw -1001012 - M4x10 UN15931 screw -1007002 - M3x6 UN15929 screw -1019002 - Dia.2,9x9,5 UN16954 screw -1601009 - "0" ring -2001008 - Circlip -1065003 - Dia.3mm UN16592 washer -1065003 - Dia.4mm UN16592 washer -1066001 - Dia.3mm UN18642 washer -1066002 - Dia.4mm UN18842 washer -3612504 - 6-pole plug -00814 - Washer -01181 - Flanged roller -01552 - Roller -01553 - Flanged roller -01931 - Washer -CNR310 - Roller spindle -CNR314 - Flanged roller spindle -CNR318 - Tilted roller spindle -CNR320 - Roller spindle -CNR322 - Roller bracket -CNR344 - Potentiometer control finger -CNR348 - Helical spring -CNR353 - Potentiometer support -CPC409 - Right guard -CPC410 - Left guard -CPC413 - Sensing arm fingers -D01139 - Potentiometer (Assembly)	-1001002 - Vis M3x8 UN15931 -1001012 - Vis M4x10 UN15931 -1007002 - Vis M3x6 UN15929 -1019002 - Vis 2,9x9,5 UN16954 -1601009 - Rondelle de tenue -2001008 - Rondelle/frein -1065003 - Rondelle diam.3 UN16592 -1065003 - Rondelle diom.4 UN16592 -1066001 - Rondelle diam.3 UN16842 -1066002 - Rondelle diom.4 UN18842 -3612504 - Connecteur DIN 6B -00814 - Rondelle -01161 - Galet guide -01552 - Galet plein -01553 - Galet guide -01931 - Rondelle -CNR310 - Axe pour galet plein -CNR314 - Axe pour galet guide -CNR318 - Axe pour galet incline -CNR320 - Axe pour galet -CNR322 - Entredise de support gale -CNR344 - Bras commande potentiom -CNR348 - Ressort e n hélice -CNR353 - Support potentiomètre -CPC409 - Anti-bourreur droit -CPC410 - Anti-bourreur gauche -CPC413 - Galet fixe évidé -001139 - Potentiomètre (Ensemble)

# D08698	CNR 3 - 35 N	Fig.16
Freno per piatto	Platter brake	Frein électrique
-1001006 - Vite M3x16 UN15931 -1001017 - Vite M4x20 UN15931 -1001024 - Vite M5x10 UN15931 -1051005 - Dado esag.M6 UN15588 -1065003 - Rosetta dia.4 UN16592 -1066003 - Rosetta dia.5 UN18842 -2813004 - Coprimorsettiero -2834002 - Puntale -3617002 - Raddrizzatore a ponte -3852001 - Elettromagnete -D02346 - Morsettiera -002481 - Manicotto -D03191 - Isolante -D07857 - Cavo con spina -D08697 - Mensola	-1001006 - M3x16 UN15931 screw -1001017 - M4x20 UN15931 screw -1001024 - M5x10 UN15931 screw -1051005 - M6 UN15588 nut -1065003 - Dia.4 UN16592 washer -1066003 - Dia.5 UN18842 washer -2813004 - Terminal board cover -2834062 - Plunger -3617002 - Rectifier bridge -3852001 - Solenoid -D02346 - Terminal board -D02481 - Sleeve -003191 - Insulating plate -D07857 - Male 6A mains plug -D08697 - Solenoid bracket	-1001006 - Vis M3x16 UN15931 -1001017 - Vis M4x20 UN15931 -1001024 - Vis M5x10 UN15931 -1051005 - Ecrou M 6 UN15588 -1065003 - Rondelle dia.4 UN16592 -1066003 - Rondelle dia.5 UN18842 -2813004 - Couvercle -2834002 - Pointeau -3617002 - Pont redresseur -3652001 - Electro-aimant -D02346 - Barrette de connection -002481 - Manchon intermédiaire -D03191 - Plaquette isolante -D07857 - Câble avec fiche -D08697 - support



CNR 3-35N

Dispositivo comando motore

Film pay-out assembly

Dis. D09104-15

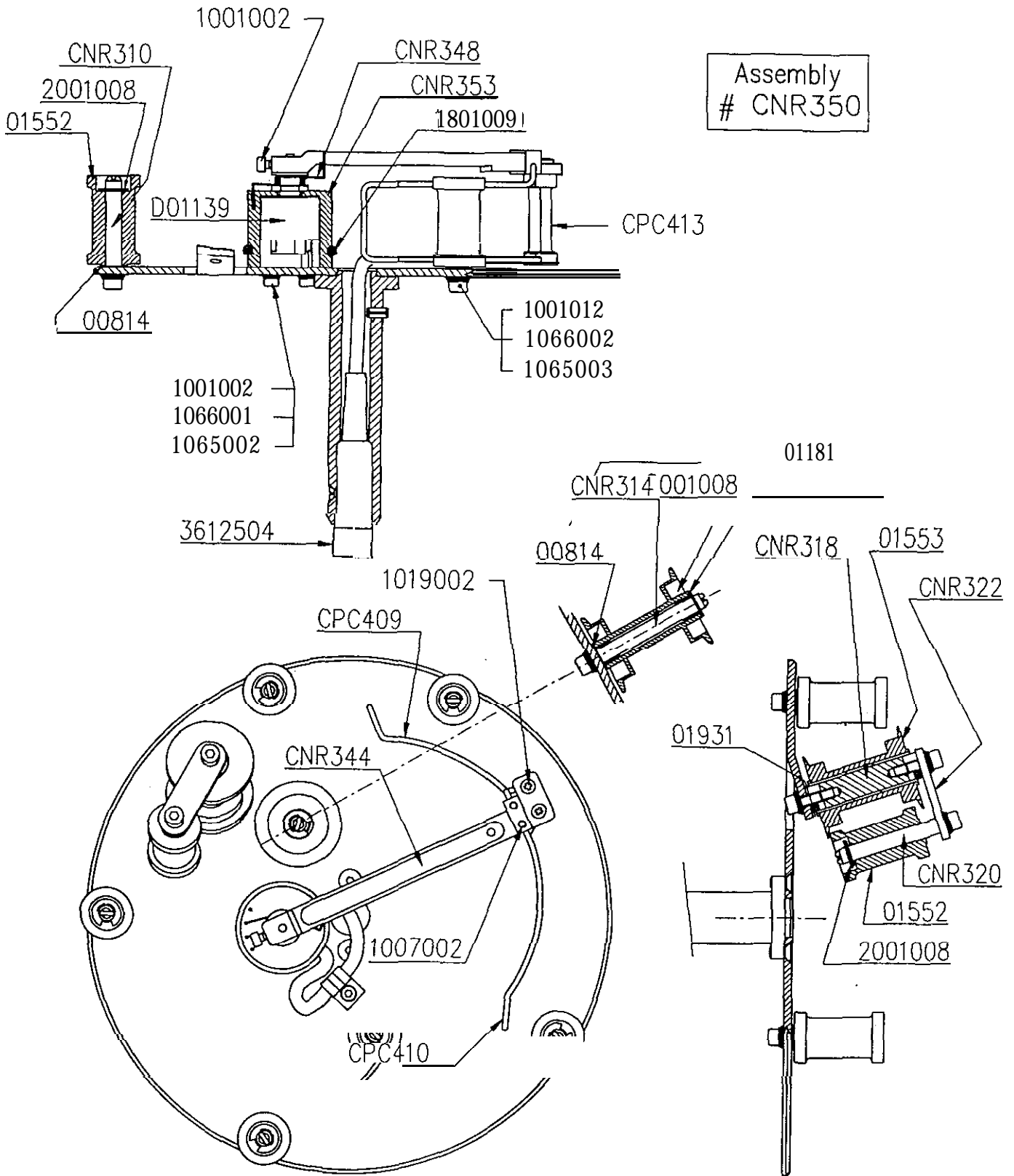


Fig. 15

Disegnato	Data	Aggiornato	
MC	19-06-97		Scala



CNR 3-35N

Freno per piatto

Platter brake

Dis. D09104-16

Assembly  
# D08698

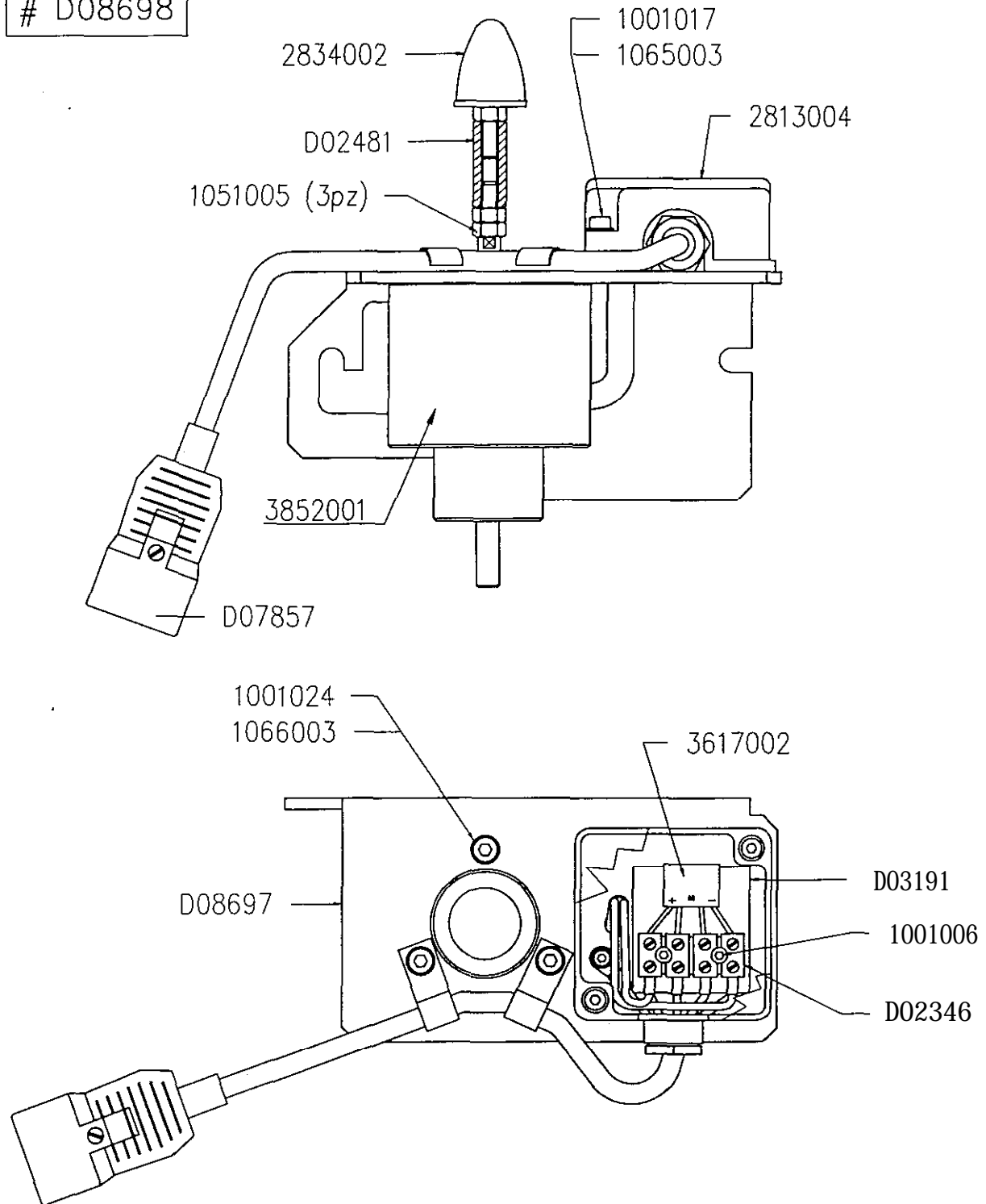
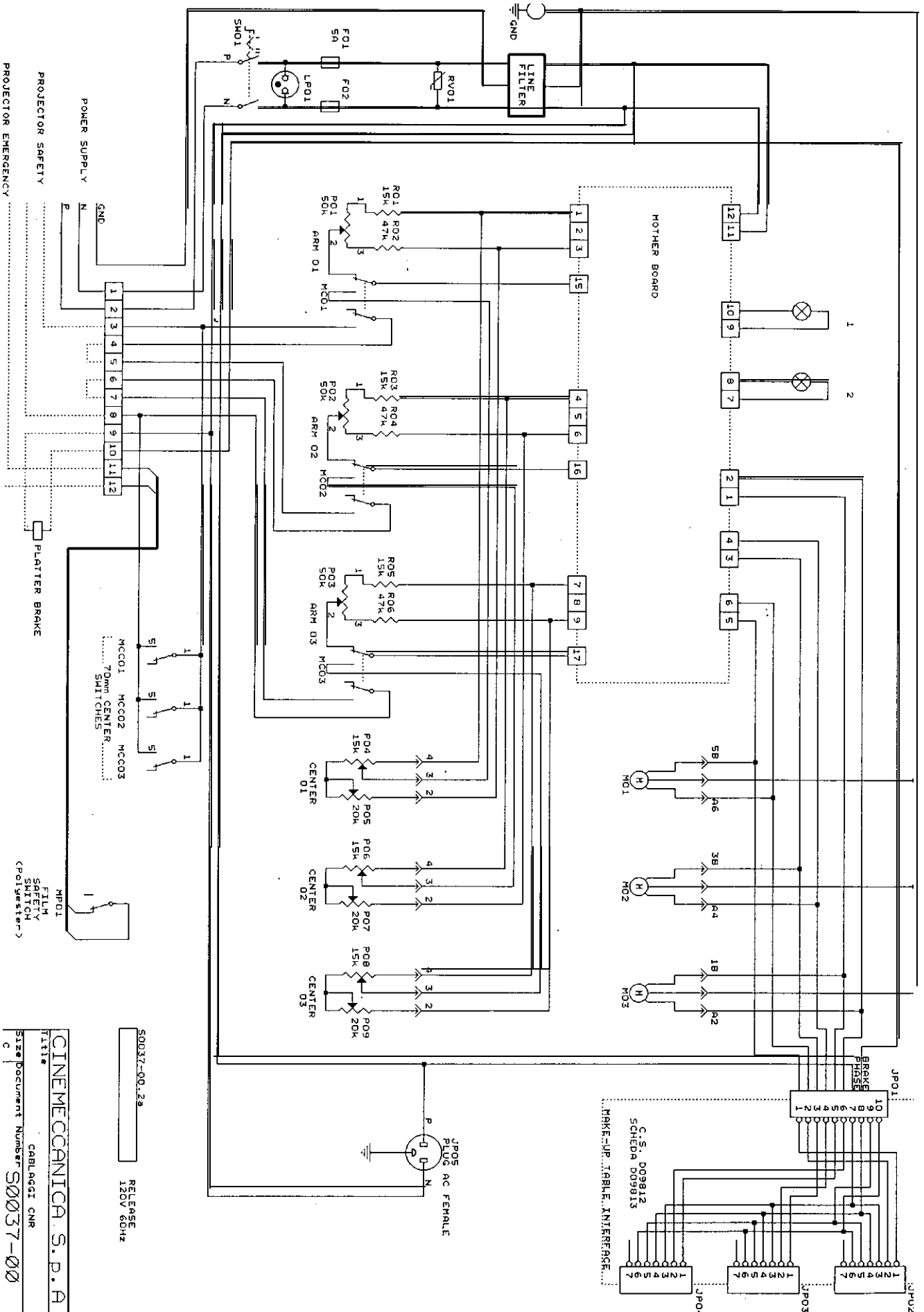


Fig. 16

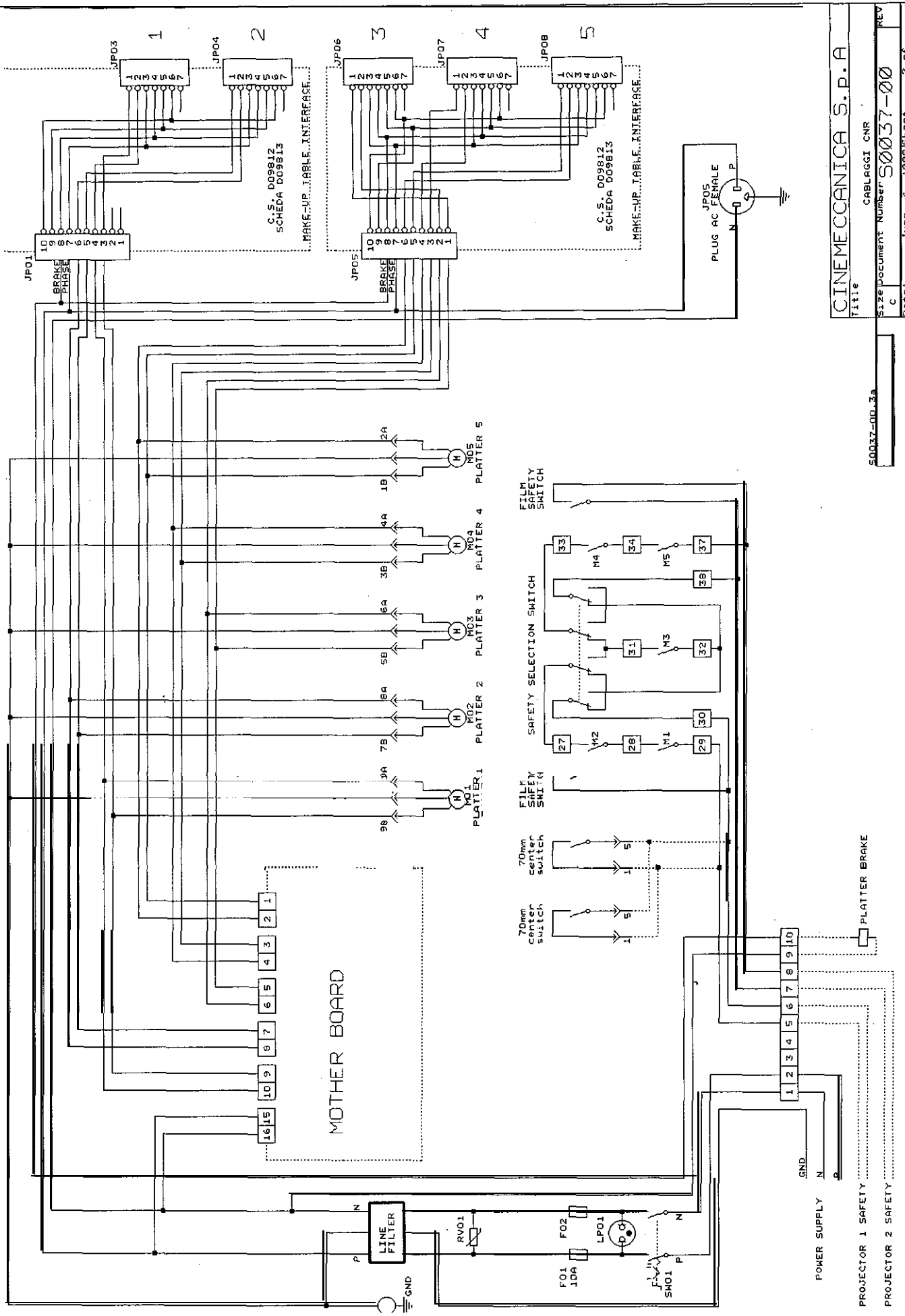
Disegnato	Data	Aggiornato
MC	19-06-W	

Scala



S0037-00.2a  
RELEASE  
120V 60Hz

CINEMECCANICA S. P. A.  
CARLGGCI CNR  
Size Document Number S0037-00  
C



PROJECTOR 1 SAFETY  
 PROJECTOR 2 SAFETY

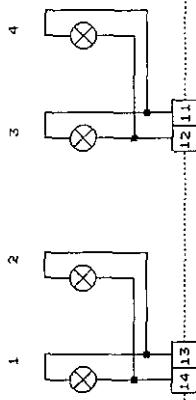
PLATTER BRAKE

POWER SUPPLY  
 GND  
 N  
 P

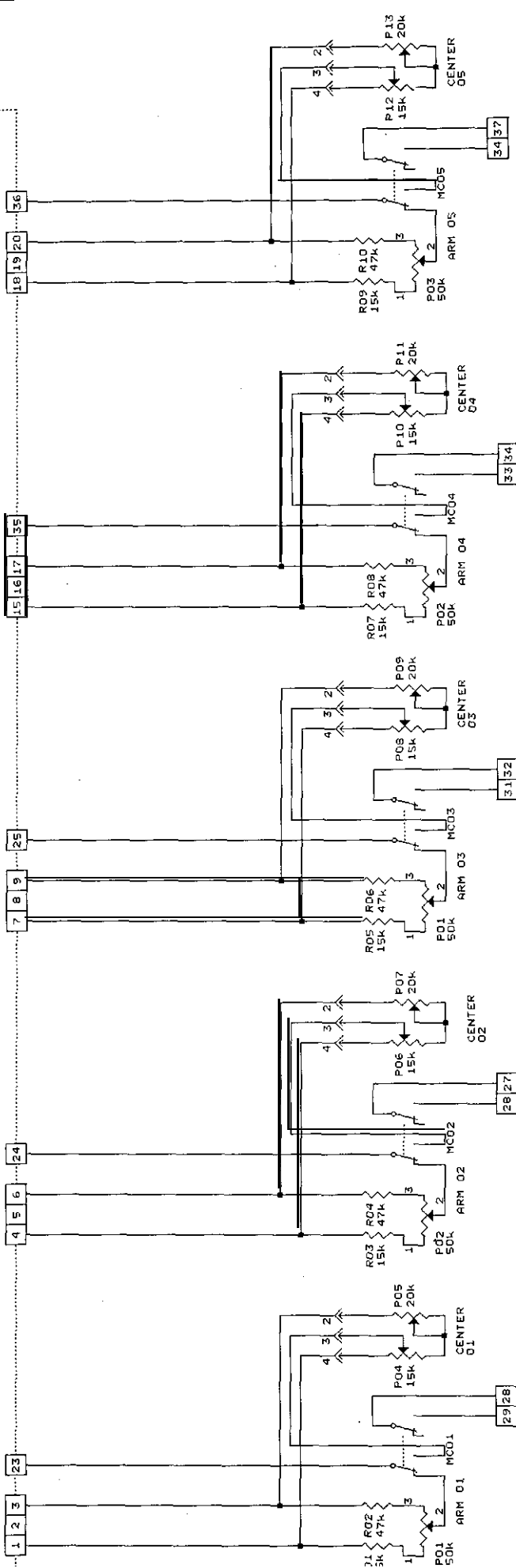
50037-00.3a

CINEMECCANICA S.P.A.  
 TYPE CABLAGGI CNR  
 Size document Number 50037-00  
 C  
 Date 1988/04/22  
 2 of

REV



MOTHER BOARD



PLATTER 1 PLATTER 2 PLATTER 3 PLATTER 4 PLATTER 5

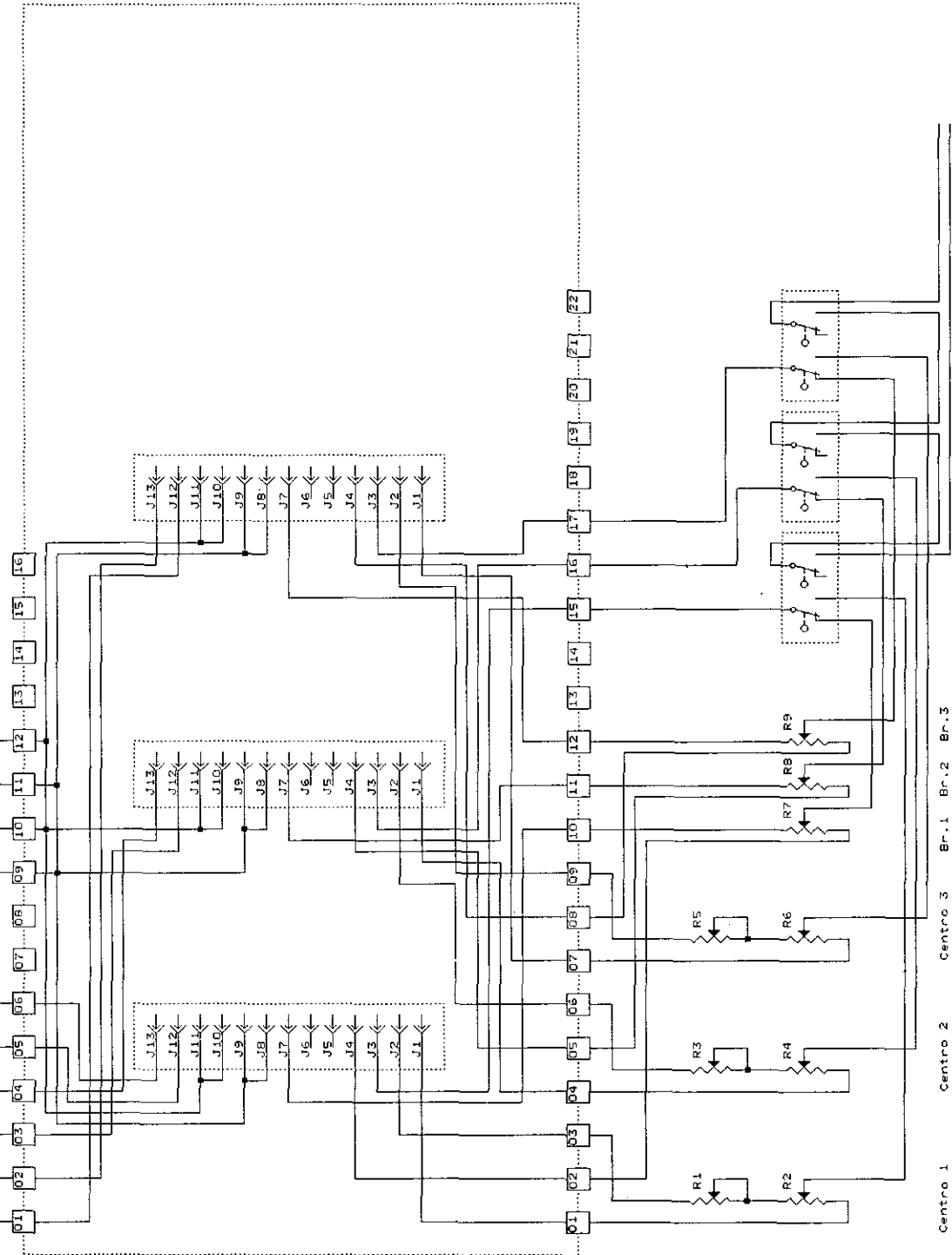
M03  
Piatto 3

M02  
Piatto 2

M01  
Piatto 3

220V 50Hz

N L



S0026-00.2

SCHEDA CONTROLLO  
VEL. MOT. CON TRASF.

S0026-00.3

SCHEDA CONTROLLO  
VEL. MOT. CON DIAC

S0026-00.4

SCHEDA CONTROLLO  
VEL. MOT. A 220V

S0026-00.5

SCHEDA CONTROLLO  
VEL. MOT. CON ST6

S0026-00.6

SCHEDA CONTROLLO  
VEL. MOT. CON TDA1023/T

CINEMECCANICA S.P.A.

Titolo

SCHEMA APPLICAZIONE SCHEDA COMANDO CNR-3-35N

Size Document Number S0026-00

REV

C

Date: December 23, 1997 Sheet 1 of 1

Centro 1

Centro 2

Centro 3

Br. 1

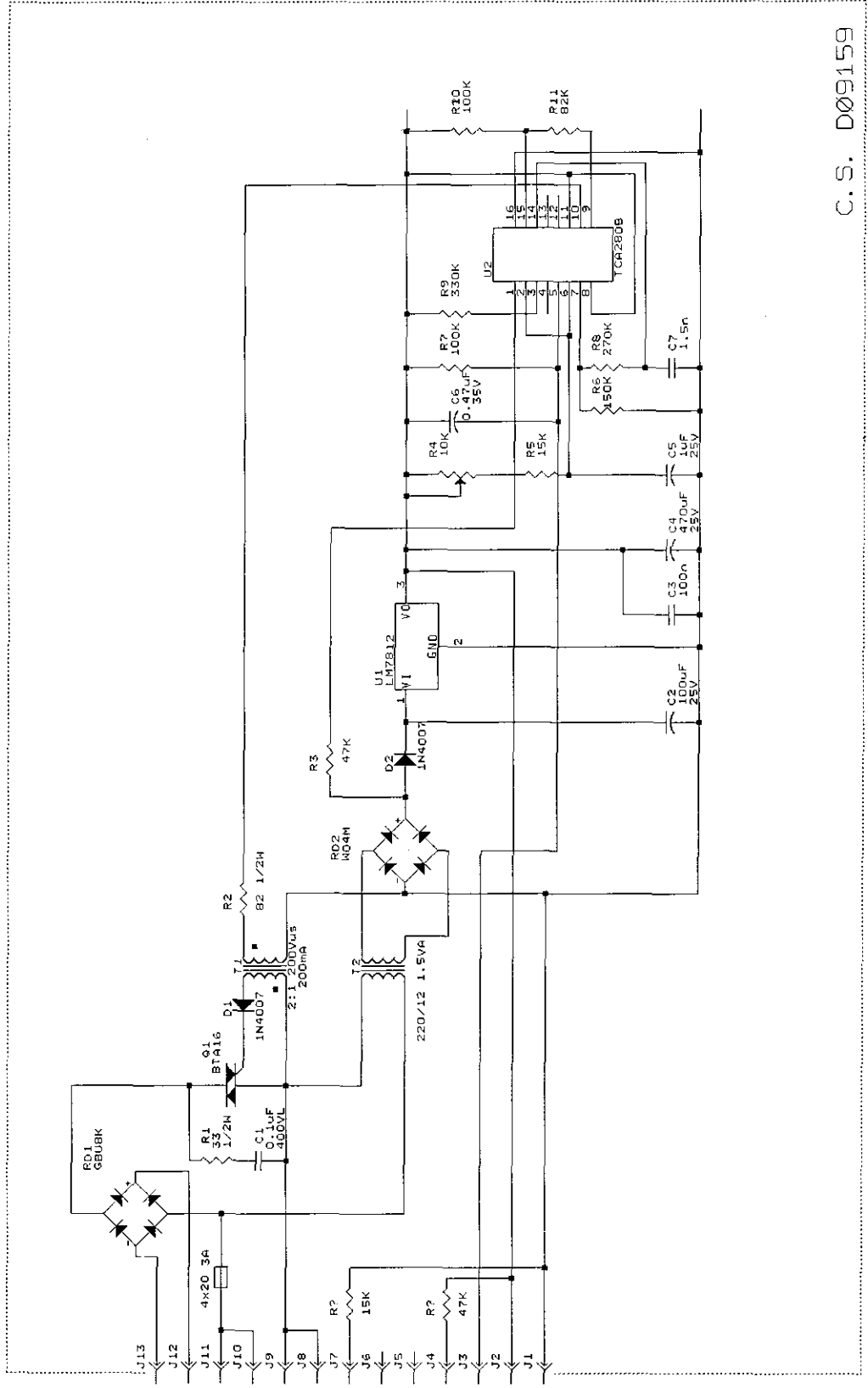
Br. 2

Br. 3

Braccio 1

Braccio 2

Braccio 3

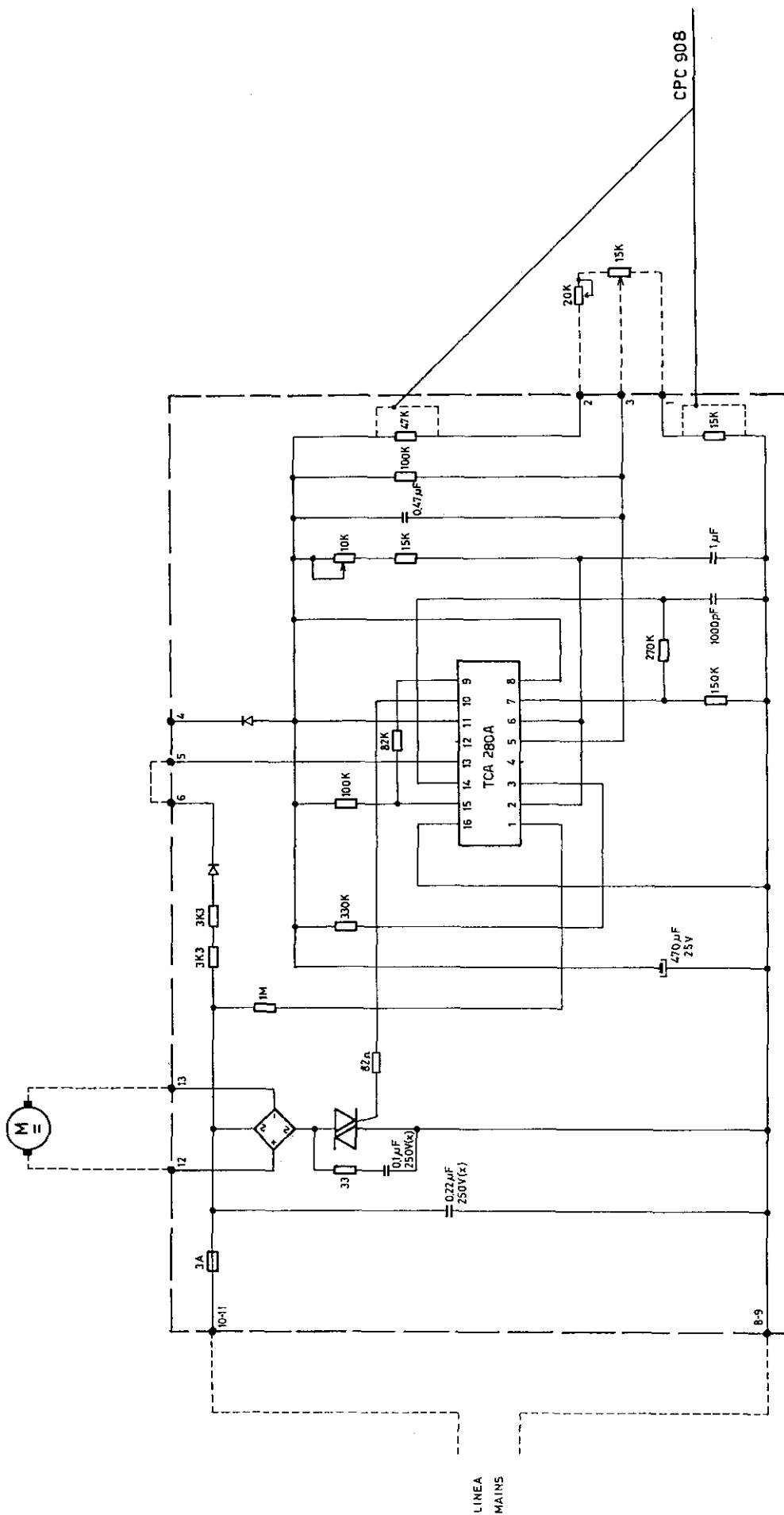


C.S. D09159

D09160

CINEMECCANICA S.p.A.	
Title	SCHEDA COMANDO CNR/GPC CON TRASFORMATORE
Size	Document Number 50025-00
REV	
Date:	December 23, 1997
Sheet	2 of 2

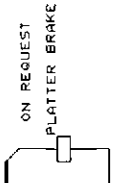
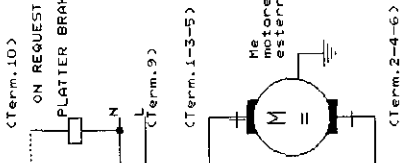
SOSTITUISCE CPC908



LINEA  
MAINS

CINEMECCANICA S.p.A. MILANO	
CNR 635 - CPC 908	
SCHEDA COMANDO MOTORE MOTOR CONTROL	
DATA	31.10.84
CONTR.	VISTO
8092	
Senza la nostra espressa autorizzazione questo disegno non deve essere riprodotto né comunicato a terzi	

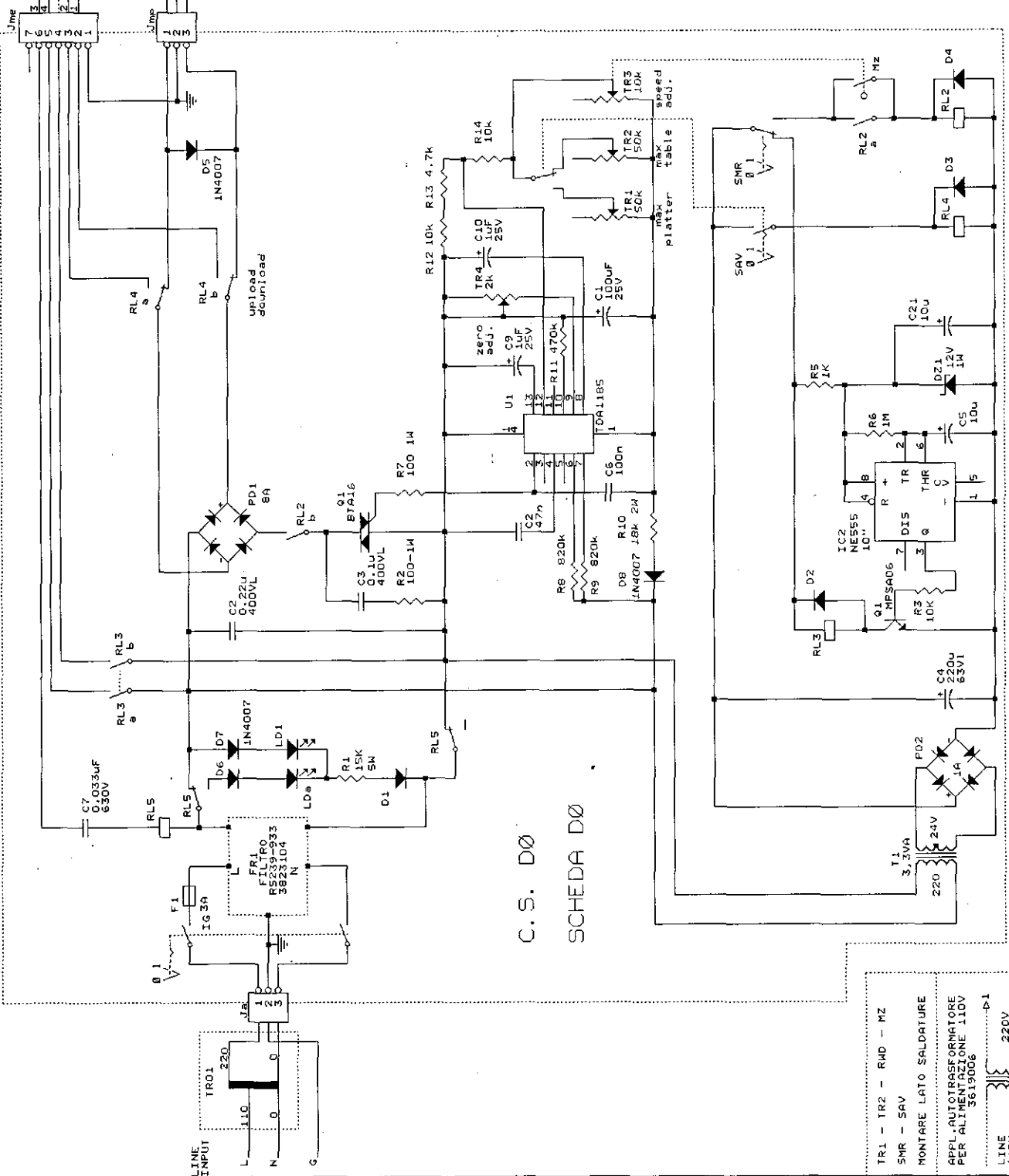
CNR



S0035-00.2  
APPLICAZIONE SU CNR  
VERSIONE PRECEDENTE

S0035-00.3  
VERSIONE PRECEDENTE

CINEMECCANICA S.P.A.  
Title SCHEDA CONTROLLO CARRELLO  
Size Document Number S0035-00  
C  
Date: November 16, 1988 Sheet 2 of 2  
REV



C.S. DØ  
SCHEDA DØ

TR1 - TR2 - RMD - MZ  
SMR - SAV  
MONTARE LATO SALDATURE  
APPL. AUTOTRASFORMATORE  
PER ALIMENTAZIONE 110V  
50/60Hz

LINE 220V  
110V