

# ZX8000 H



CINEMECCANICA



# LANTERNA ZX8000H

Riferimento gruppi

Assembly references

Dis. D10445

|        |                                    |           |                                |
|--------|------------------------------------|-----------|--------------------------------|
|        | Misure d'ingombro ZX8000H          | 8685      | Overall dimensions             |
|        | Schema elettrico ZX8000H           | 001L8X00  | Wiring diagram ZX8000H         |
|        | Tabella adattatori per lampade     | 8657      | Bulb adaptors list             |
|        | Raffreddamento lampada             | 8887      | Lamp cooling                   |
| Fig.1  | Chiusura fori regolazioni          | D10445-1  | Adjustment holes shutter plate |
| Fig.2  | Interruttore portina               | D10445-2  | Door microswitch               |
| Fig.3  | Gruppo serranda                    | D10445-3  | Dowser assembly                |
| Fig.4  | Gruppo ventilazione                | D10445-4  | Blower assembly                |
| Fig.5  | Componenti vari                    | D10445-5  | Different items                |
| Fig.6  | Interr.sicurezza ventilazione      | D10445-6  | Blower safety switch           |
| Fig.7  | Dispositivo portalampada           | D10445-7  | Lampholder assembly            |
| Fig.8  | Terminale positivo completo        | D10445-8  | Positive cable assembly        |
| Fig.9  | Spia cratere lampada               | D10445-9  | Sight window                   |
| Fig.10 | Derivatore                         | D10445-10 | Shunt                          |
| Fig.11 | Pannello di controllo              | D10445-11 | Control panel                  |
| Fig.12 | Serranda automatica                | D10445-12 | Automatic dowser               |
| Fig.13 | Filtro calore                      | D10445-13 | Heat filter                    |
| Fig.14 | Interruttore sicurezza aspirazione | D10445-14 | Exhauster safety switch        |

-1001014 -Vite M5x25  
 -1016011 -Vite M4x10 DIN7985  
 -1019003 -Vite autof.4,2x9,5 UN16954  
 -2803012 -Maniglia  
 -2816023 -Ventilatore assiale  
 -000726 -Cono per V8  
 -002251 -Cono per V5  
 -D07200 -Filtro colore completo  
 -D10834 -Roccordo per aeiroazione  
 -D10882 -Roccordo ospiraz (Film 35mm)  
 -D10887 -Raccordo aspiraz (Film 70mm)  
 -D10534 -Serranda automatico compl.

-1001014 - M5x25 screw  
 -1016011 - M4x10 DIN7985 screw  
 -1019003 - Dia.4,2x9,5 UN16954 screw  
 -2803012 - Handle  
 -2816023 - Exhaust fan  
 -000728 - V8 cone  
 -002251 - V5 cone  
 -D07200 - Heat filter assembly  
 -D10834 - Intake air tube (Standard)  
 -D10882 - Intake air tube (35mm film)  
 -D10887 - Intake air tube (70mm film)  
 -D10534 - Automatic dowser assembly

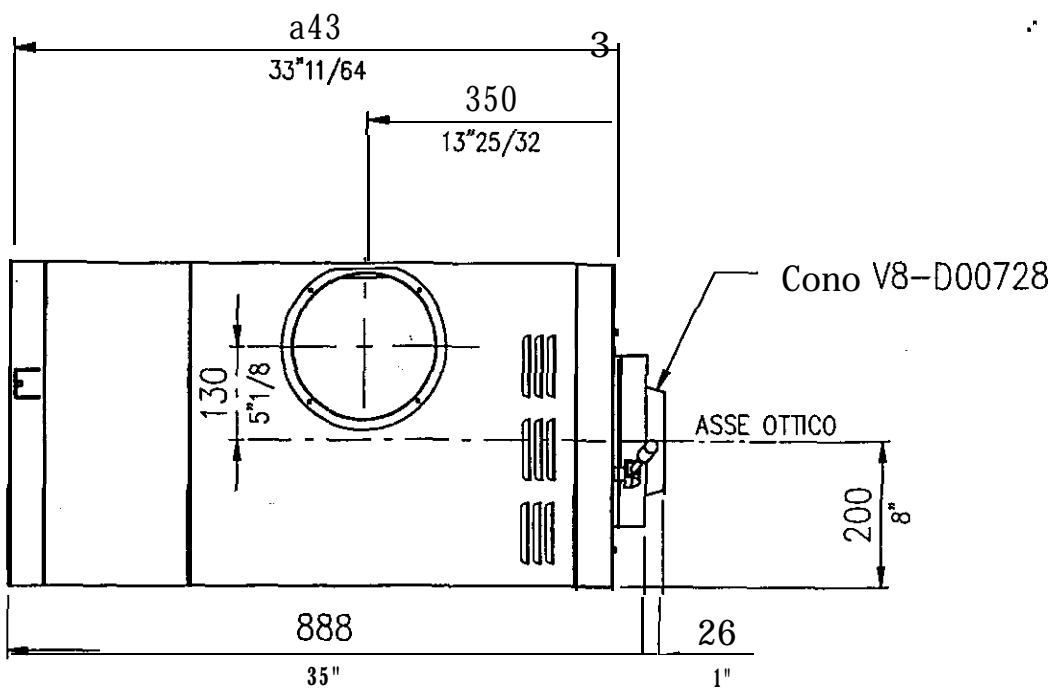
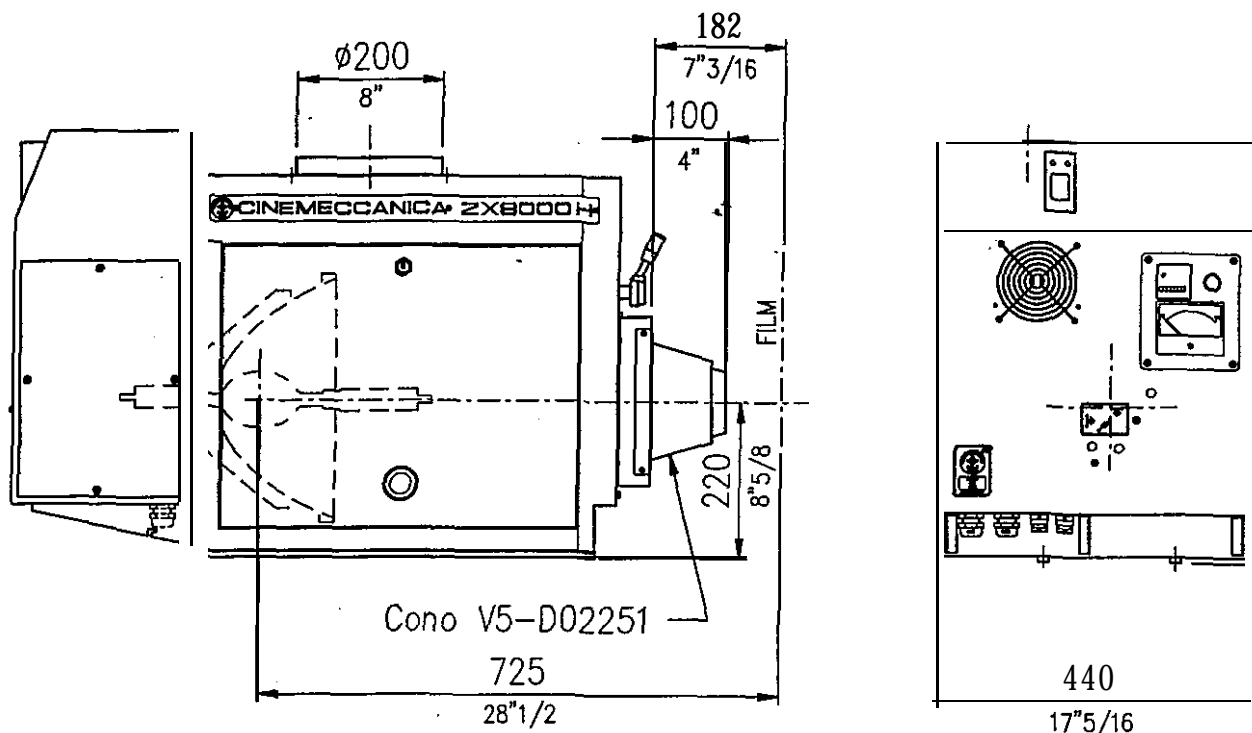
-1001014 -Vis M5x25  
 -1016011 -Vis M4x10 DIN7985  
 -1019003 -Vis 4,2x9,5 UN16954  
 -2803012 -Poignée  
 -2816023 -Aspirateur supplémentaire  
 -000728 -Cône pour V8  
 -002251 -Cône pour V5  
 -D07200 -Filtre chaleur complet  
 -D10834 -Tube d'ospiroton Standard  
 -D10882 -Tube d'ospiroton Film 35mm  
 -D10887 -Tube d'ospiroton Film 70mm  
 -D10534 -Volet outomotique complet



# MISURE D'INGOMBRO LANTERNA ZX8000H

## Overall dimensions

Dis.8685



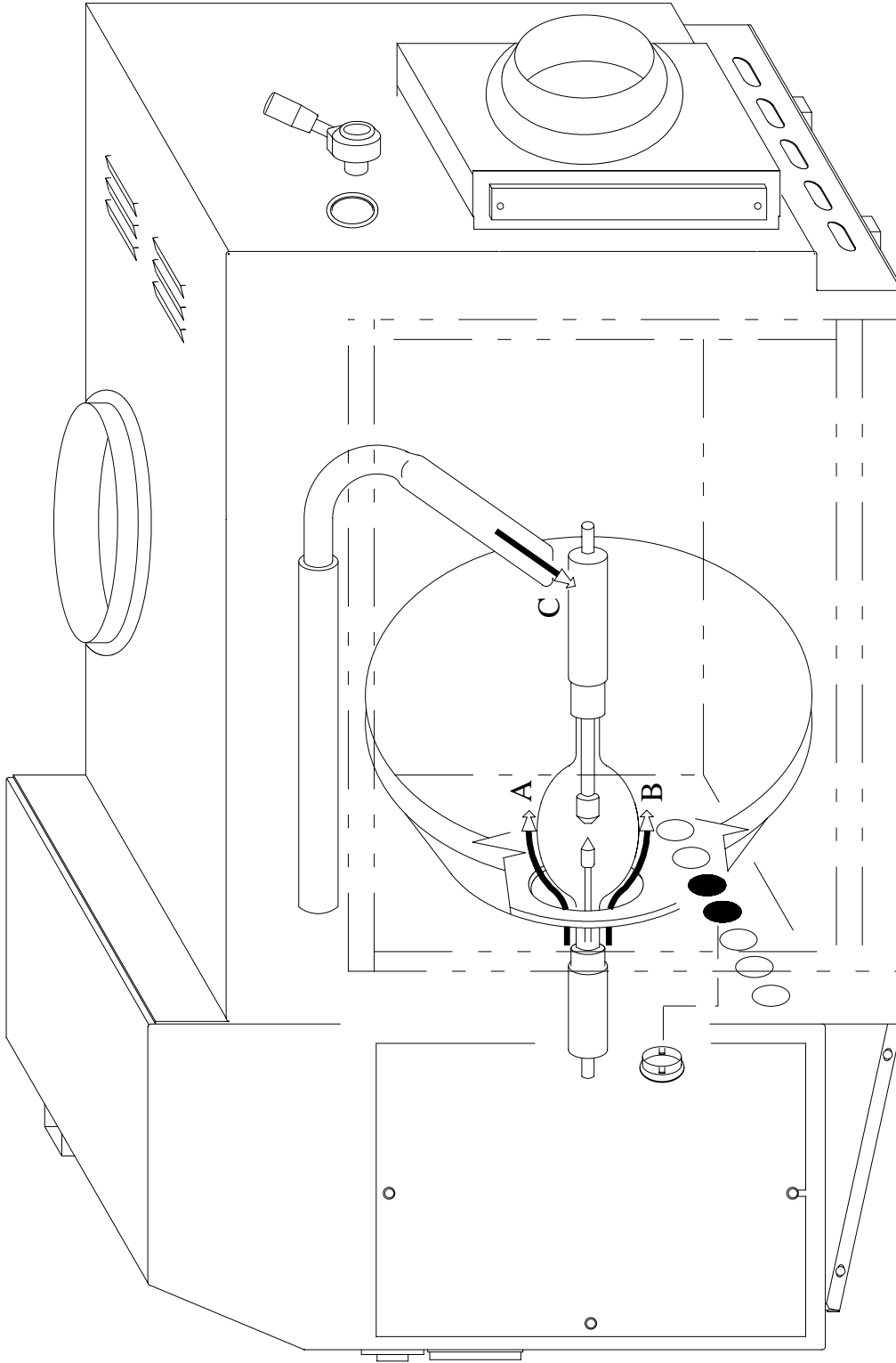


# LANTERNA ZX8000H

Raffreddamento lampada

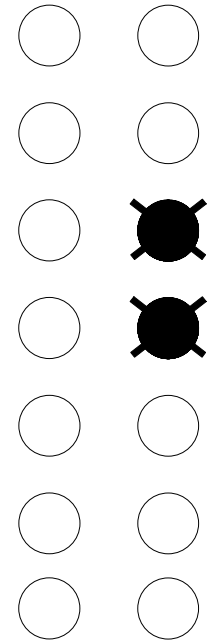
Lamp cooling

Dis. 8887



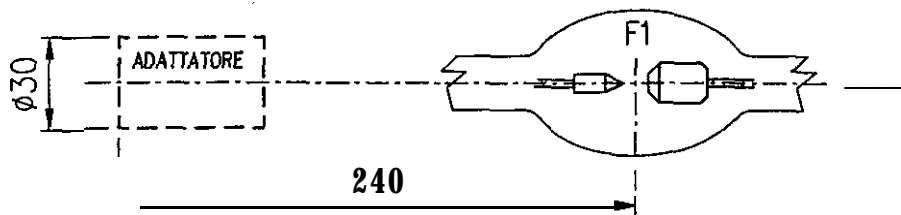
LAMPADA 3000W - 5000W  
Lamp

LAMPADA 6000W - 8000W  
Lamp

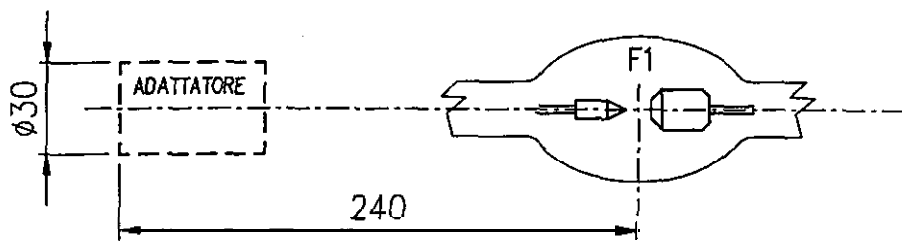


VELOCITA' ARIA A e B 10.5 m/sec C 5 m/sec  
Air cooling

VELOCITA' ARIA A e B 12.5 m/sec C 7 m/sec  
Air cooling



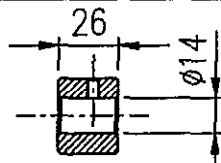
| DIMENSIONI mm. | N.disegno | TIPO DI LAMPADA   |
|----------------|-----------|---|
|                | D07340    | XBO 2500 W/HS OFR -OSRAM- XBO 2000 W/HS OFR<br>XBO 3000 W/HS OFR -OSRAM-<br>UXL 20 SC -USHIO-<br>UXL 25 SC -USHIO-<br>UXL 30 SC -USHIO- |
|                | D07341    | UXL 3000 HK-0 -USHIO-<br>UXL 3601 HK-0 -USHIO-  |
|                | D06784    | XBO 4000 W/HS OFR -OSRAM- XBO 5000 W/HBM OFR<br>XBO 7000 W/HS OFR -OSRAM-<br>UXL 40 SC -USHIO-<br>UXL 70 SC -USHIO- UXL 80 SC           |
|                | D07342    | UXL 2003 HKL-0 -USHIO-  |
|                | D07343    | XBO 3000 W/H -OSRAM-  |
|                | D07344    | XBO 3000 W/HTP -OSRAM-  |
|                | D07345    | XBO 5000 W/H OFR -OSRAM-<br>XM 5000-5H/VC -ORC-<br>UXL 5000 HR -USHIO-  |
|                | D06849    | UXL 6000 HK-0 -USHIO-   |
|                | D08058    | UXL 4000 HA -USHIO-   |



DIMENSIONI mm.

N.disegno

TIPO DI LAMPADA



D11084

UXL 6000 HN

-USHIO-





# LANTERNA ZX8000H

Chiusura fori regolazioni — Adjustment holes shutter plate

Dis. D10445-1

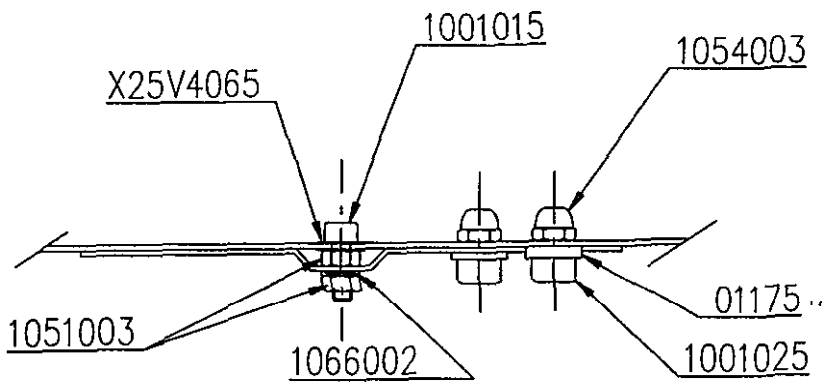
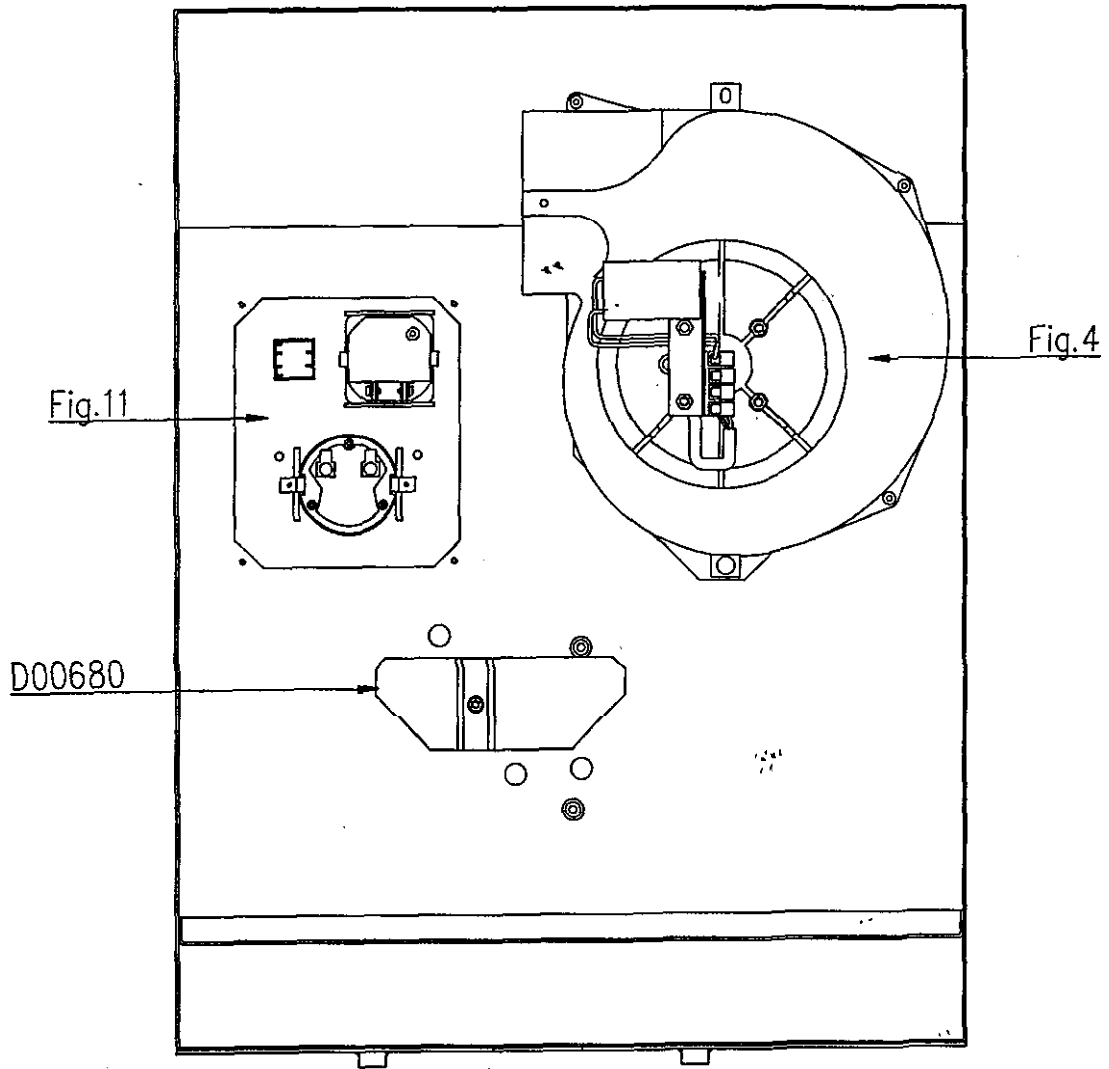


Fig. 1

|           |          |             |        |
|-----------|----------|-------------|--------|
| Disegnato | Data     | Agglomerato |        |
| MC        | 05-02-99 |             | Contad |



LANTERNA ZX8000H

In terru ttore portina

Door microswitch

Dis. D10445-

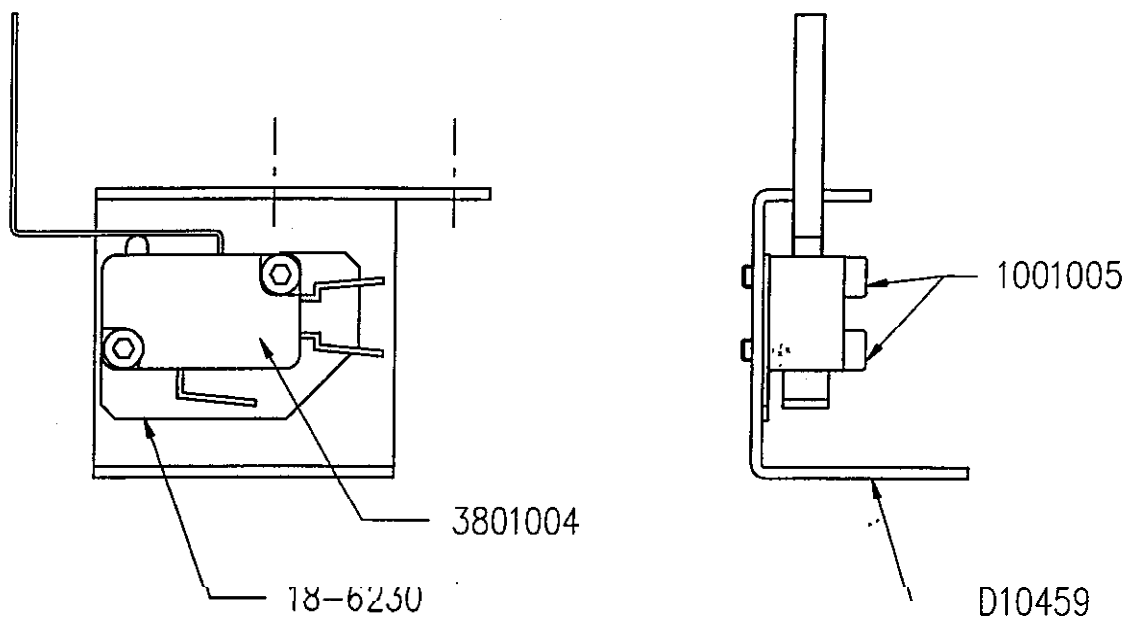


Fig.2

| Disegnato | Data     | Aggiornato |       |
|-----------|----------|------------|-------|
| MC        | 05-02-00 |            | Scala |

LANTERNA ZX8000H

Fig.1

Chiusura fori regolazioni

Adjustment holes shutter plate

Fermeture trous de réglage

- 01175 - Rosetta
- 1001015 - Vite **M4x16** UN15931
- 1001025 - Vite **M5x12** UN15931
- 1051003 - Dado **esag.M4** UN15588
- 1054003 - Dado **esag.M5** UN15721
- 1066002 - Rosetta dia.4 UN18842
- ~~X25V4065~~ - Rosetta **elastica**
- ~~D00680~~ - Ohi usura fori

- ~~01175~~ - Washer
- 1001015 - **M4x16 UN15931 screw**
- 1001025 - **M5x12 UN15931 screw**
- 1051003 - M4 UN15588 nut
- 1054003 - M5 UN15721 nut
- 1066002 - Dia.4 **UNI8842 washer**
- ~~X25V4065~~ - **Elastic washer**
- 000680 - Holes shutter plate

- ~~01175~~ - Rondelle
- 1001015 - **Vis M4x16** UN15931
- 1001025 - **Vis M5x12** UN15931
- 1051003 - **Ecrou M4** UN15568
- 1054003 - Ecrou **M5** UN15721
- 1066002 - Rondelle dia.4 UN18842
- ~~X25V4065~~ - Rondelle **elastique**
- 000680 - Fermeture des trous

LANTERNA ZX8000H

Fig.2

Interruttore portina

Door microswitch

Interrupteur de la porte

- 1001005 - Vite **M3x14** UN15931
- ~~3801004~~ - Micro interruttore
- ~~18-6230~~ - Isolante
- ~~D10459~~ - Supporto

- 1001005 - **M3x14** UN15931 screw
- ~~3801004~~ - Microswitch
- ~~18-6230~~ - Insulating plate
- ~~D10459~~ - Bracket

- 1001005 - **Vis M3x14** UN15931
- ~~3601004~~ - Micro-interrupteur
- 18-6230 - Isolant
- ~~D10459~~ - "Support



# LANTERNA ZX8000H

Gruppo serranda

Dowser assembly

Dis. D10445-3

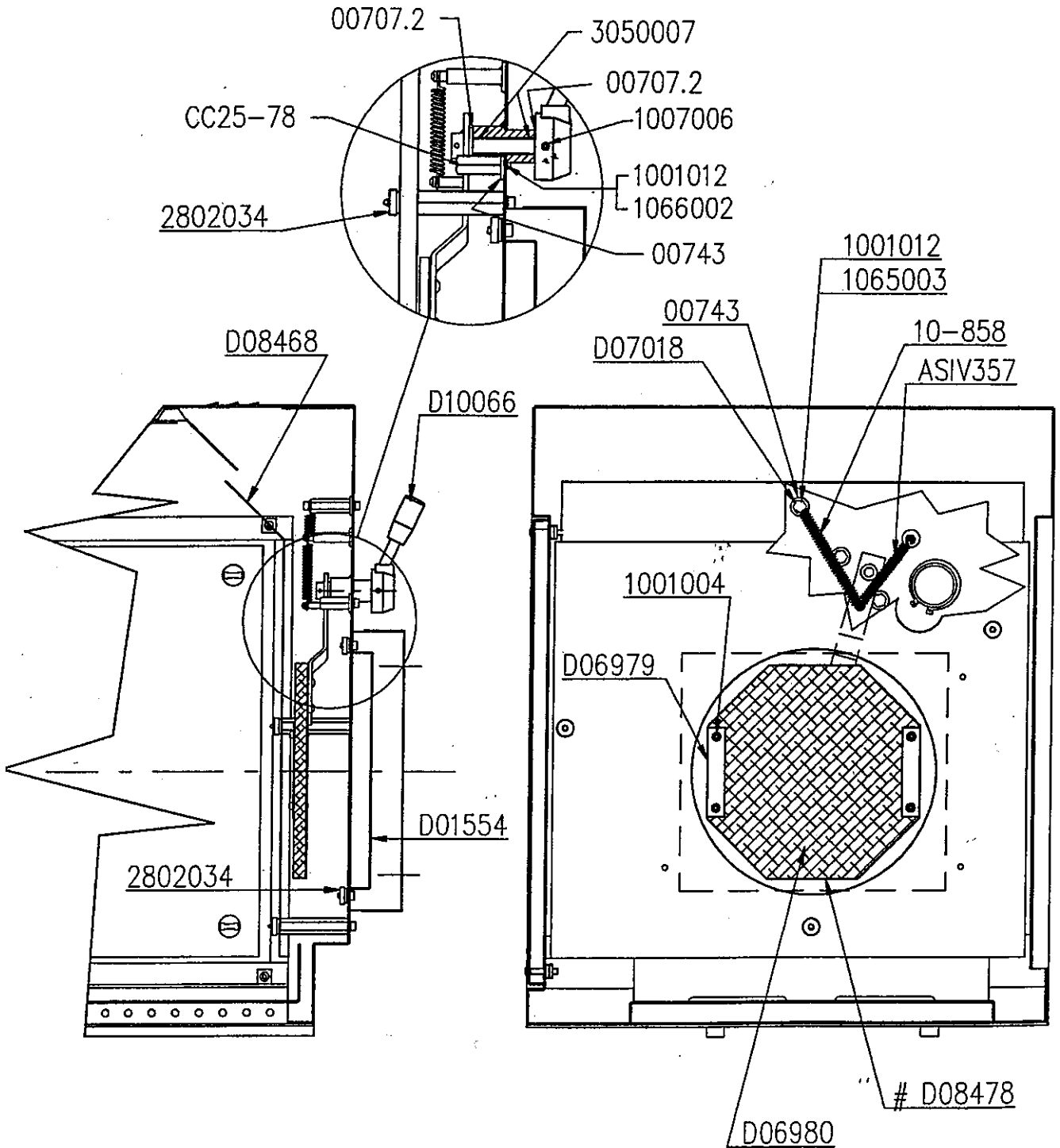


Fig. 3

| Disegnato | Data     | Aggiornato |
|-----------|----------|------------|
| MC        | 05-02-99 |            |

Scala



LANTERNA ZX8000H

Gruppo ventilazione

Blower assembly

Dis. D10445-4

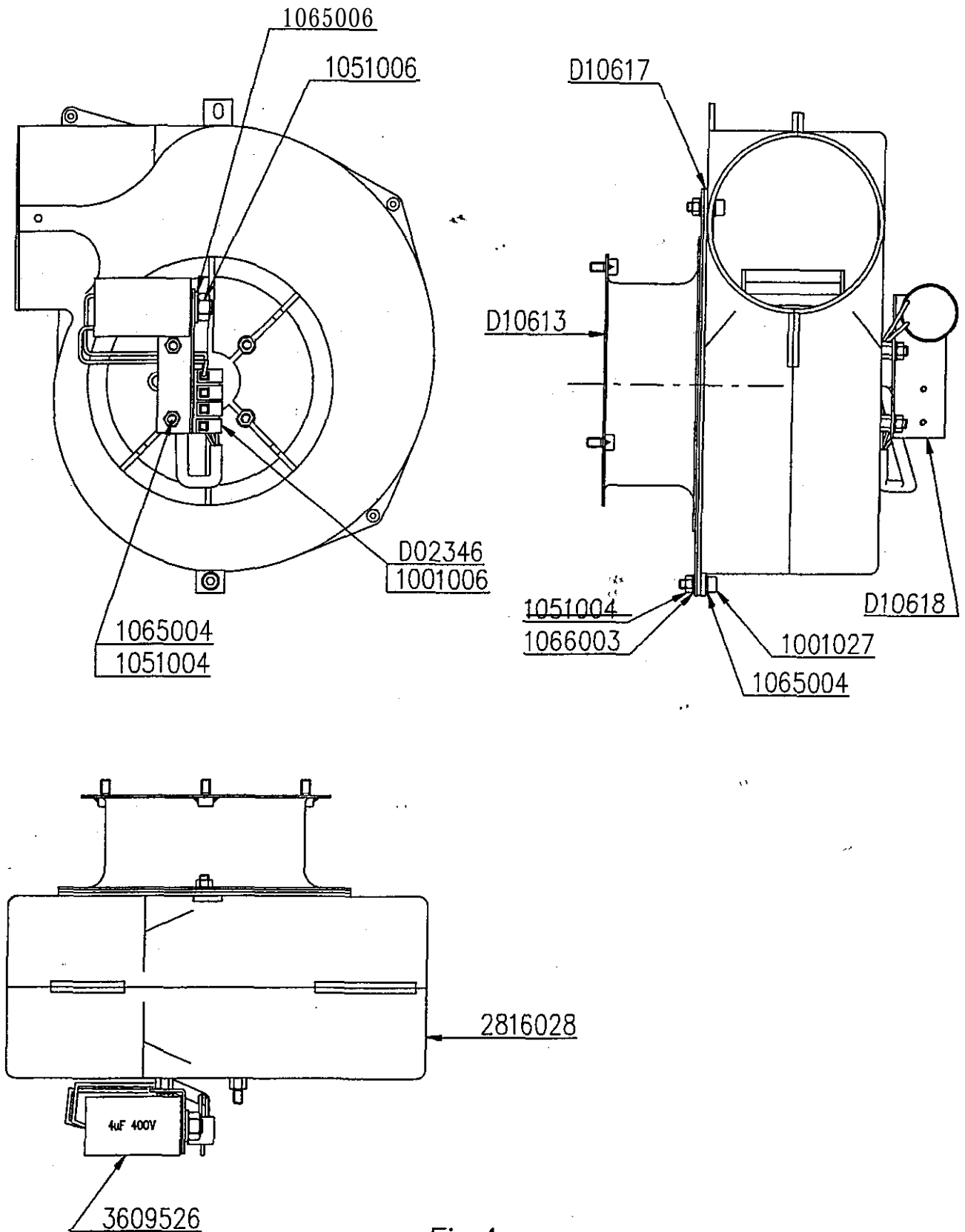


Fig.4

| Disegnato | Data     | Agglomerato |
|-----------|----------|-------------|
| MC        | 05-02-99 |             |

Scala

LANTERNA ZX8000H

Fig

| Gruppo serranda  | Dowser assembly  | Volet complet   |
|--|--|---|
| -00707-2 - Rosetta<br>-00743 - Rosetta<br>-10-858 - Molla<br>-1001004 - Vite M3x12 UN15931<br>-1001012 - Vite M4x10 UN15931<br>-1007006 - Vite M4x8 UN15929<br>-1065003 - Rosetta dia.4 UN16592<br>-1066002 - Rosetta dia.4 UN18842<br>-2802034 - Manopola zigrinato<br>-3050007 - Boccola<br>-ASIV357 - Molla<br>-CC25-78 - Colonnina fennaserranda<br>-D01554 - Foderina supporto filtro<br>-D06979 - Piastrina<br>-D06980 - Isolante termico<br>-D07018 - Penno<br>-D08468 - Protezione colore<br>-D08478 - Serrando completa<br>-D10066 - Leva | -00707-2 - Washer<br>-00743 - Washer<br>-10-858 - Spring<br>-1001004 - M3x12 UN15931 screw<br>-1001012 - M4x10 UN15931 screw<br>-1007006 - M4x8 UN15929 screw<br>-1065003 - Dia.4 UN16592 washer<br>-1066002 - Dia.4 UN18842 Washer<br>-2802034 - Knob<br>-3050007 - Bushing<br>-ASIV357 - S ring<br>-CC25-78 - S&d<br>-D01554 - Heat filter frame<br>-D06979 - Plate<br>-D06980 - Heat shield<br>-D07018 - Spindle<br>-D08468 - Heat shield panel<br>-D08478 - Dowser assembly<br>-D10066 - Lever | -00707-2 - Rondelle<br>-00743 - Rondelle<br>-10-858 - Ressort<br>-1001004 - Vis M3x12 UN15931<br>-1001012 - Vis M4x10 UN15931<br>-1007006 - Vis M4x8 UN15929<br>-1065003 - Rondelle dia.4 UN16592<br>-1066002 - Rondelle dia.4 UN18842<br>-2802034 - Poignée moletée<br>-3050007 - Isolant<br>-ASIV357 - Ressort<br>-CC25-78 - Prissonnier arrêt volet<br>-D01554 - Support filtre chaleur<br>-D06979 - Plaquette<br>-D06980 - Protection chaleur<br>-D07018 - Axe<br>-D08468 - Protection chaleur<br>-D08478 - Volet<br>-D10066 - Levier |

LANTERNA ZX8000H

Fig.

| Gruppo ventilazione   | Blower assembly   | Soufflerie   |
|---|---|--|
| 1001027 - Vite M5x16 UN15931<br>1051004 - Dado esag.M5 UN15588<br>1051006 - Dado esag.M8 UN15588<br>1065004 - Rosetta dia.5 UN16592<br>1065006 - Rosetta dia.8 UN16592<br>2816028 - Ventilatore<br>3609526 - Condensatore 4uF 400V<br>102346 - Morsettiara<br>110613 - Roccordo flangiato<br>110617 - Guomizione<br>110618 - Supporto | -1001027 - M5x16 UN15931 screw<br>-1051004 - M5 UN15588 nut<br>-1051006 - M8 UN15588 nut<br>-1065004 - Dia.5 UN16592 washer<br>-1065006 - Dia.8 UN16592 washer<br>-2816028 - Blower<br>-3609526 - 4uF 400V capacitor<br>-D02346 - Terminal board<br>-D10613 - Flanged pipe<br>-D10617 - Gasket<br>-D10618 - Bracket | -1001027 - Vis M5x16 UN15931<br>-1051004 - Écrou M5 UN15588<br>-1051006 - Écrou M8 UN15588<br>-1065004 - Rondelle dia.5 UN16592<br>-1065006 - Rondelle dia.8 UN16592<br>-2816028 - Soufflerie<br>-3609526 - Condensateur 4uF 400V<br>-D02346 - Bornier<br>-D10613 - Raccord à brides<br>-D10617 - Joint<br>-D10618 - support |

# D07200

LANTERNA ZX8000H

Fig.13

## Filtro calore completo

## Heat filter assembly

## Filtre chaleur complet

-00299 - Bottone M4  
 -1001001 - Vite M3x16 UN15931  
 -1001003 - Vite M4x10 UN15931  
 -1065002 - Rosetta dia.3 UN16592  
 -1065003 - Rosetta dia.4 UN16592  
 -3614023 - Distanziola  
 -D00732 - Filtro calore (2 Pz)  
 -D01554 - Supporto  
 -D07015 - Telaio filtro calore  
 -D07016 - Colonna  
 -D07017 - Squodretta fermaspecchio  
 -D07201 - Rosetta tenuta filtro

-00299 - Fastening knob  
 -1001001 - M3x16 UN15931 screw  
 -1001003 - M4x10 UN15931 screw  
 -1065002 - Dia.3 UN16592 washer  
 -1065003 - Dia.4 UN16592 washer  
 -3614023 - Spacer  
 -D00732 - Heat filter (2 Rs)  
 -D01554 - Support  
 -D07015 - Frame  
 -D07016 - Spacer  
 -D07017 - Filter stopper  
 -D07201 - Washer

-00299 - Poignée  
 -1001001 - Vis M3x16 UN15931  
 -1001003 - Vis M4x10 UN15931  
 -1065002 - Rondelle diam 3 UN16592  
 -1065003 - Rondelle diam 4 UN16592  
 -3614023 - Entretaise  
 -D00732 - Filtre chaleur (2 Rs)  
 -D01554 - Support  
 -D07015 - Cadre  
 -D07016 - Entretaise  
 -D07017 - Plaquette de fixation  
 -D07201 - Rondelle

# D10584

LANTERNA ZX8000H

Fig.1 4

## In terr.sicurezza aspiraz.

## Exhauster 'safety switch

## Interr.sécurité aspirateur

1001005 - Vite M3x14 UN15931  
 18-6230 - Isalante  
 D10585 - Supporto  
 D10803 - Microinterruttore completo

-1001005 - M3x14 UN15931 screw  
 -18-6230 - Insulating plate  
 -D10585 - Bracket  
 -D10803 - Microswitch assembly

-1001005 - Vis M3x14 UN15931  
 -18-6230 - Isolant  
 -D10585 - support  
 -D10803 - Micro-interrupteur complet



# LANTERNA ZX8000H

Interrutt.sicurezza aspirazione - Exhauster safety switch

Di s.D10445-14

# 010584

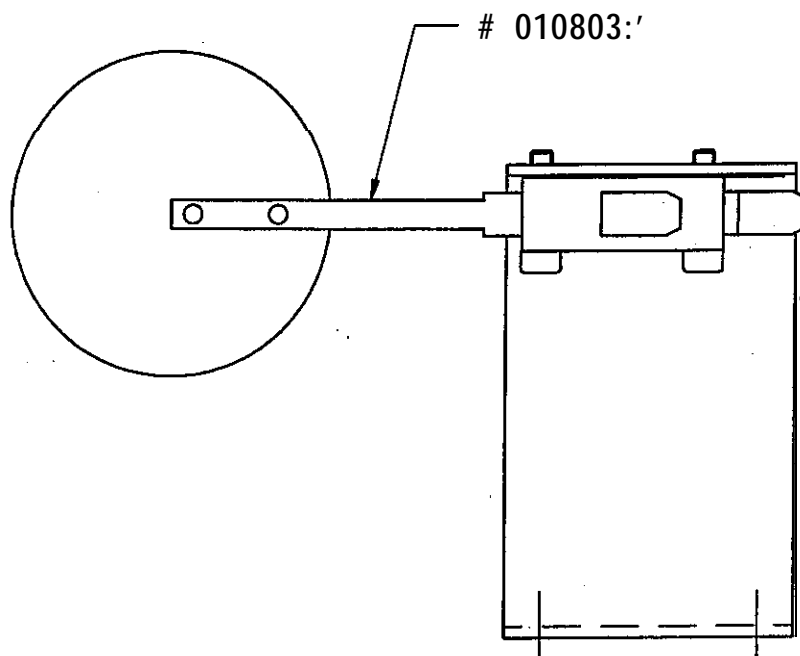
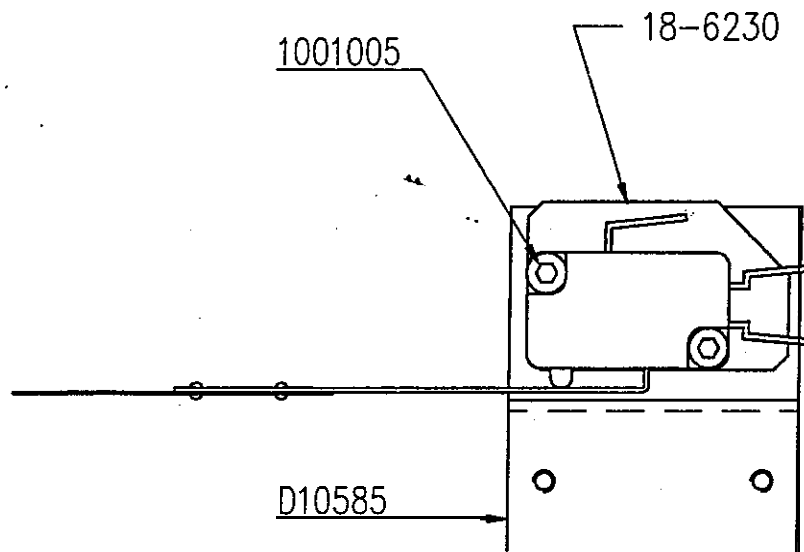


Fig.1 4

| Disegnato | Data     | Agglomerato |
|-----------|----------|-------------|
| MC        | M-0.5-99 |             |

Scala

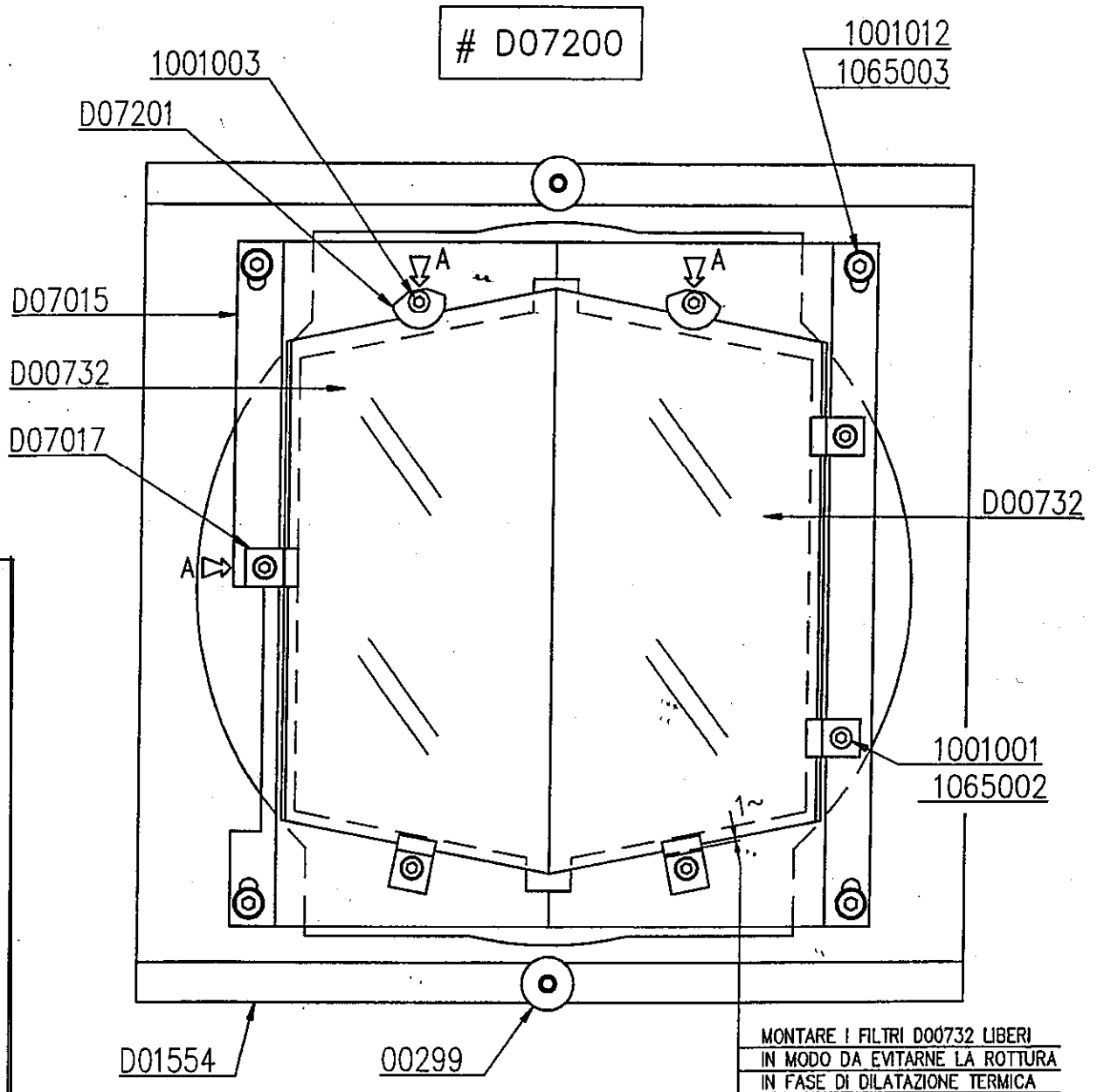


# LANTERNA ZX8000H

Fil tro calore

Heat filter

Dis. D10445-13



PER SOSTITUIRE I FILTRI D00732 ALLENTARE LE VITI  
 CONTRASSEGATE CON LA LETTERA "A".  
 TO REPLACE FILTERS D00732 TAKE OUT BRACKETS "A".

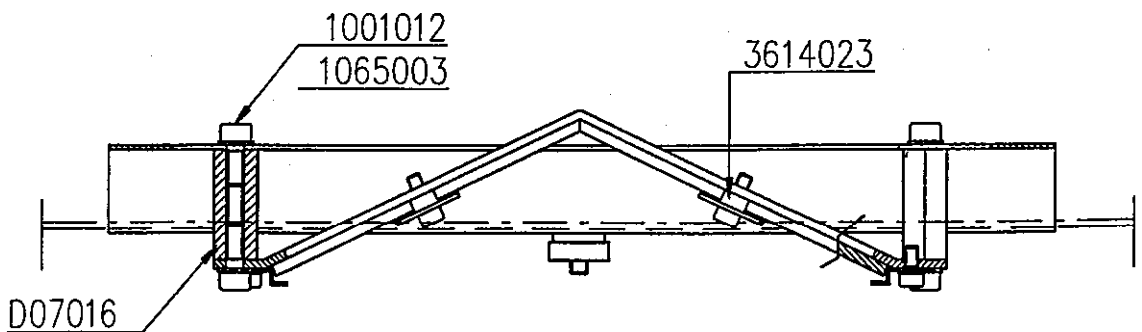


Fig.13

| segnato | Data     | Aggiornato |       |
|---------|----------|------------|-------|
| MC      | 16-03-99 |            | Scala |

# LANTERNA ZX8000H

Fig.1 1

| Pannello di controllo   | Control panel   | Panneau de contrôle   |
|---|---|---|
| -3814007 - Amperometro 50-200A<br>-3815001 - Contoore 220V 50Hz<br>-3815002 - Contoore 220V 60Hz<br>-007673 - Pannello strumento<br>-DX2-3385 - Pulsante accensione | -3814007 - 50-200A ammeter<br>-3815001 - 50Hz hour meter<br>-3815002 - 60Hz hour meter<br>-007673 - Instrument panel<br>-DX2-3385 - Push-button | -3814007 - Ampremetre<br>-3815001 - Compteur horaire 50Hz<br>-3815002 - Compteur horaire 60Hz<br>-D07673 - Pannau instruments<br>-DX2-3385 - Bouton omrcege |

# D10534

# LANTERNA ZX8000H

Fig.1 2

| Serranda automatica   | Automatic dowser  | Volet automatique   |
|---|---|---|
| -1001001 - Vite M3x6 UN15931<br>-1001002 - Vite M3x8 UN15931<br>-1001003 - Vite M3x10 UN15931<br>-1001004 - Vite M3x12 UN15931<br>-1001006 - Vite M3x16 UN15931<br>1001010 - Vite M4x6 UN15931<br>1007006 - Vite M4x8 UN15929<br>1011066 - Vite M2,5x16 UN16107<br>1014043 - Vite M2,5x6 UN16109<br>1065003 - Rosetta dia.4 UN16592<br>1066001 - Rosetta dia.3 UN18842<br>2012009 - Spina dia.2,5x16 UN16364A<br>3050007 - Boccola autolubrificante<br>3606217 - Resistenza 1W 470hm<br>3609574 - Condensatore 10uF 45V<br>3801010 - Microinterruttore<br>8V8147A - Rosetta<br>8V8215 - Vite a colletto<br>CX10-128 - Mozzo<br>D02138 - Isolante per micro<br>D02438 - Morsettiero<br>D06979 - Piastrino<br>D06980 - Isolante termico<br>D09390 - Motoriduttore 24V 50/60Hz<br>D10182 - Piastrina<br>910185 - Camma comando<br>310186 - Canno premimicro<br>110189 - Copertura<br>110197 - Blocchetto<br>110198 - Piastrino innesto<br>110199 - Molla<br>D10403 - Perno<br>110600 - Supporto<br>D10601 - Lsvo<br>110604 - Serrondo completa | -1001001 - M3x6 UN15931 screw<br>-1001002 - M3x8 UN15931 screw<br>-1001003 - M3x10 UN15931 screw<br>-1001004 - M3x12 UN15931 screw<br>-1001006 - M3x16 UN15931 screw<br>-1001010 - M4x6 UN15931 screw<br>-1007006 - M4x8 UN15929 screw<br>-1011066 - M2,5x16 UN16107 screw<br>-1014043 - M2,5x6 UN16109 screw<br>-1065003 - Dia.4 UN16592 washer<br>-1066001 - Dia.3 UN18842 washer<br>-2012009 - Dia.2,5x16 UN16364A spindle<br>-3050007 - Bushing<br>-3606217 - 1W 470hm resistor<br>-3609574 - 10uF 45V capacitor<br>-3801010 - Microswitch<br>-8V8147A - Washer<br>-8V8215 - Screw<br>-CX10-128 - Hub<br>-D02138 - Insulating washer<br>-D02438 - Terminal boards<br>-D06979 - Plate<br>-D06980 - Heat shield<br>-D09390 - Motor & gear box<br>-D10182 - Plate<br>-D10185 - Cam<br>-D10186 - Cam<br>-D10189 - Cover<br>-D10197 - Block<br>-D10198 - Plate<br>-D10199 - Spring<br>-D10403 - Spindle<br>-D10600 - Bracket<br>-D10601 - Lever<br>-D10604 - Dowser assembly | -1001001 - Vis M3x6 UN15931<br>-1001002 - Vis M3x8 UN15931<br>-1001003 - Vis M3x10 UN15931<br>-1001004 - Vis M3x12 UN15931<br>-1001006 - Vis M3x16 UN15931<br>-1001010 - Vis M4x6 UN15931<br>-1007006 - Vis M4x8 UN15929<br>-1011066 - Vis M2,5x16 UN16107<br>-1014043 - Vis M2,5x6 UN16109<br>-1065003 - Rondelle diam4 UN16592<br>-1066001 - Rondelle diam3 UN18842<br>-2012009 - Axe diam.2,5x16 UN16364A<br>-3050007 - Douille<br>-3606217 - Rdsistance 1W 470hm<br>-3609574 - Condensateur 10uF 45V<br>-3801010 - Micro-interrupteur<br>-8V8147A - Rondelle<br>-8V8215 - Vis<br>-CX10-128 - Moyeu<br>-D02138 - Isolant pour micro<br>-D02438 - Bonier<br>-D06979 - Plaque<br>-D06980 - Protection chaleur<br>-D09390 - Moto-réducteur<br>-D10182 - Plaquette<br>-D10185 - Came comonde<br>-D10186 - Came<br>-D10189 - Couvercle<br>-D10197 - Bloc<br>-D10198 - Ploquette<br>-D10199 - Ressort<br>-D10403 - Axe<br>-D10600 - support<br>-D10601 - Levier<br>-D10604 - Volet complet |



# LANTERNA ZX8000H

Serranda automatica

Automatic dowsler

Di s.D10445-12

# D10534

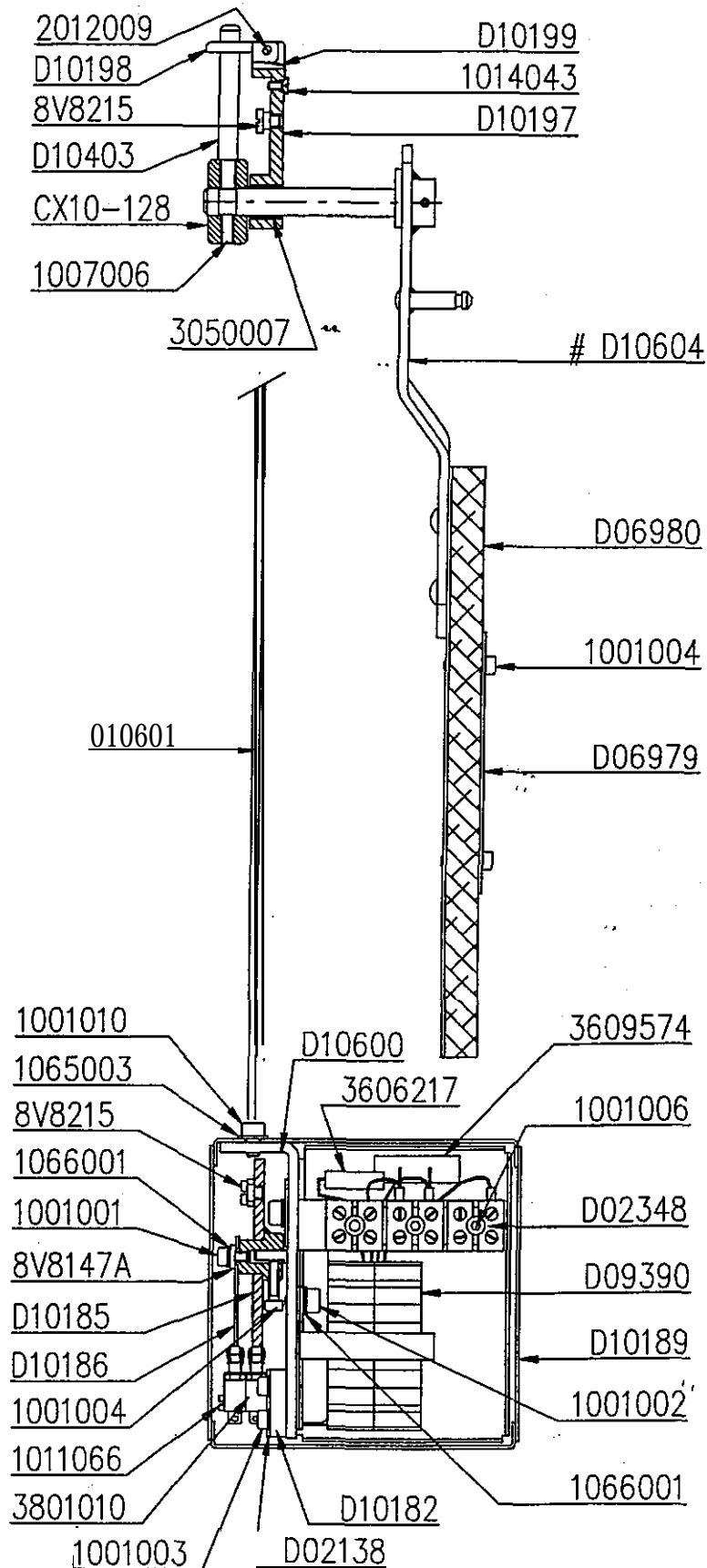


Fig.1 2

| segnato | Data     | Aggiornato |       |
|---------|----------|------------|-------|
| MC      | 15-03-99 |            | Scala |



# LANTERNA ZX8000H

Pannello' di controllo

Control panel

Dis. D10445-11

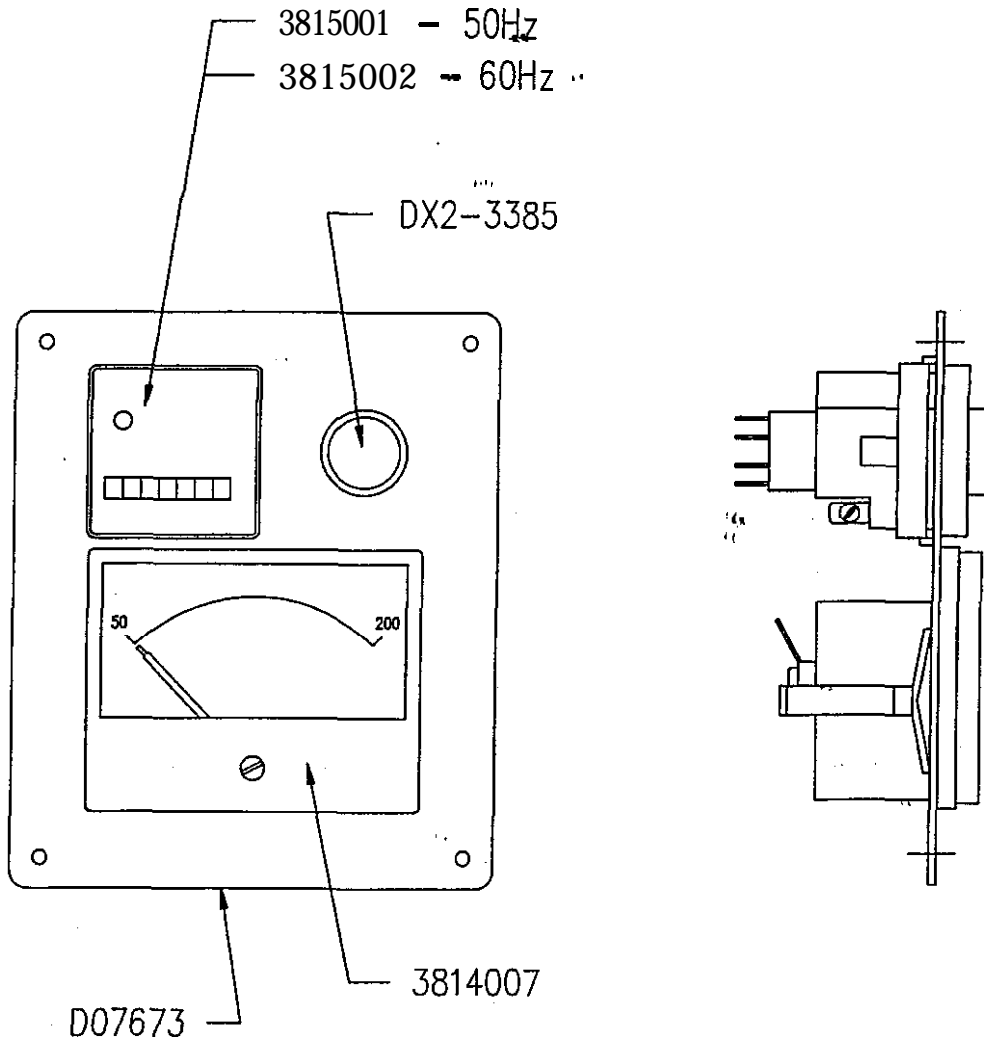


FIG. 1 1

# 01784

## LANTERNA ZX8000H

Fig.9

| Spia cratere lampada   | Sight window  | Verre teinté de visée  |
|--|---|--|
| -01785 - Cornice<br>-01786 - Vetro<br>-2003032 - Anello elastico d. 38 UN13653<br>-2004019 - Anello elastico d. 32 UN13654<br>-2005021 - Anello elastico | -01785 - Frame<br>-01786 - Glass<br>-2003032 - Dia.38mm UN13653 circlip<br>-2004019 - Dia.32mm UN13654 circlip<br>-2005021 - □ ostic ring | -01785 - Cadre<br>-01786 - Verre<br>-2003032 - Bague Blastique dia. 38 UN13653<br>-2004019 - Bague élastique dia. 32 UN13654<br>-2005021 - Bague élastique |

## LANTERNA ZX8000H

Fig.1 0

| Derivatore   | Shunt   | Dérivateur   |
|--|---|--|
| I003010 - Vite M4x20 UN15933<br>I051003 - Dado esag.M4 UN15588<br>I066002 - Rosetta d.4 UN18842<br>1602091 - Capocorda<br>1637004 - Derivatore 150A 45mV<br>1637005 - Derivatore 200A 45mV<br>D08671 - Tubetto di bloccaggio | -1003010 - M4x20 UN15933 screw<br>-1051003 - M4 UN15588 nut<br>-1066002 - Dia.4 UN18842 washer<br>-3602091 - Terminal lug<br>-3637004 - 150A 45mV shunt<br>-3637005 - 200A 45mV shunt<br>-D08671 - Locking tube | -1003010 - Vis M4x20 UN15933<br>-1651003 - Ecrou M4 UN15588<br>-1066002 - Rondelle dia.4 UN18842<br>-3602091 - Cosse<br>-3637004 - Dérivateur 150A 45mV<br>-3637005 - Dérivateur 200A 45mV<br>-D08671 - Tube de fixation |

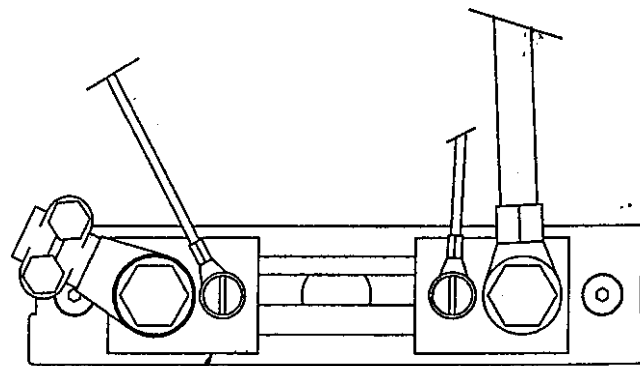
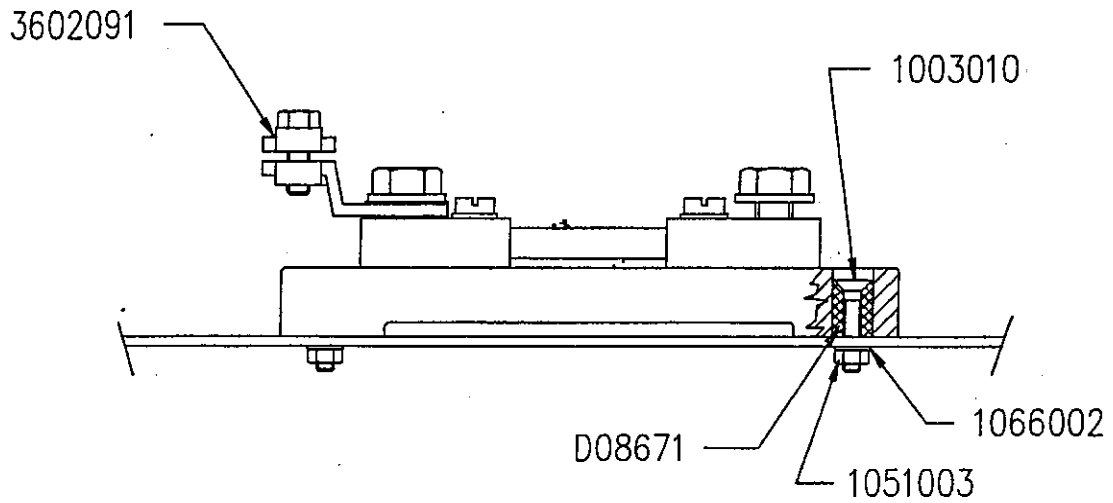


# LANTERNA ZX8000H

Derivatore

Shunt

Dis. D10445-1



- 3637004 (150A 45mV)
- 3637005 (200A **45mV**)

FIG. 10



LANTERNA ZX8000H

Spia cratere lampada

Sight window

Dis. D10445-9

# 01784

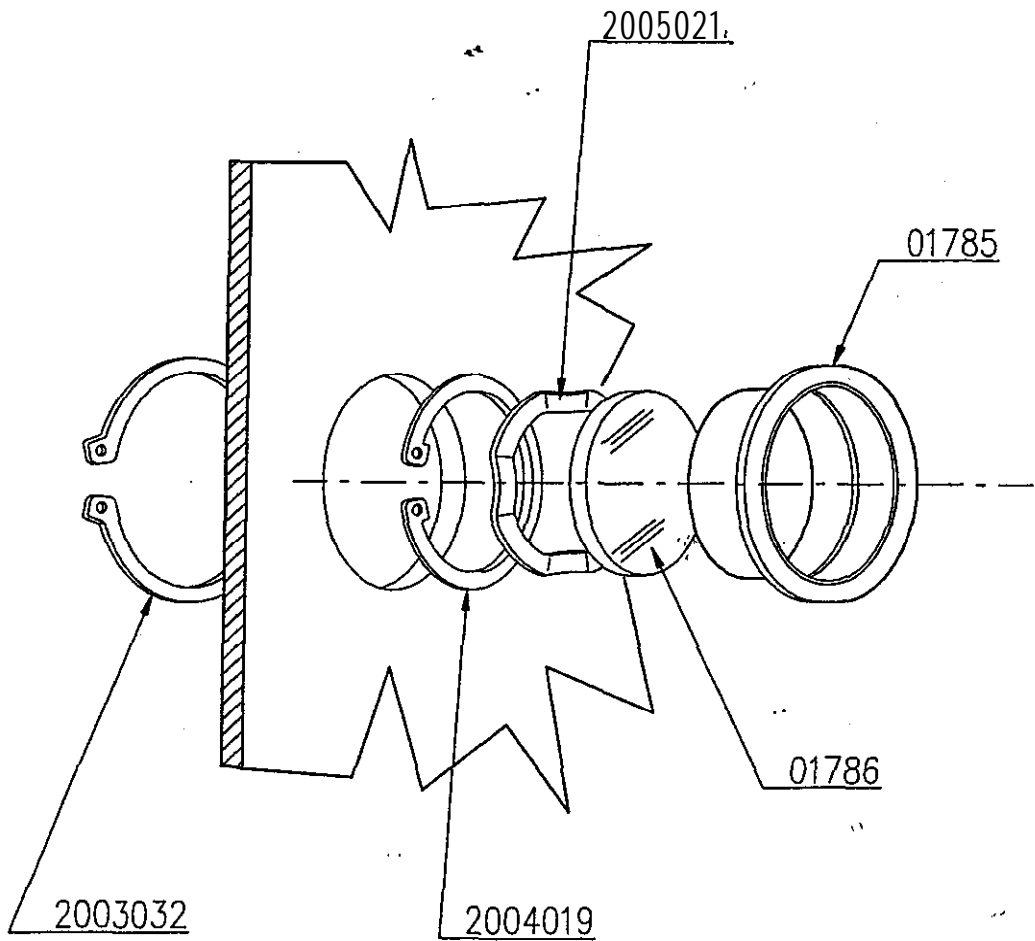


FIG.9

| Disegnato | Data     | Agglomerato |       |
|-----------|----------|-------------|-------|
| MC        | 11-03-99 |             | Scala |

# D10530

## LANTERNA ZX8000H

Fig.7

| Dispositivo portalampada               | Lampholder assembly                 | Ensemble portelampe                    |
|--|-------------------------------------|--|
| -00570 - Vite morsetto                 | -00570 - Screw                      | -00570 - vis                           |
| -00572 - Rosetta                       | -00572 - Washer                     | -00572 - Rondelle                      |
| -00706-5 - Rosetta                     | -00706-5 - Washer                   | -00706-5 - Rondelle                    |
| -00863-4 - Disco supporto morsetto     | -00863-4 - Clamp holder disc        | -00863-4 - Disque support borne        |
| -00863-6 - Morsetto lampada            | -00863-6 - Bulb clamp               | -00863-6 - Dome lampe                  |
| -00863-g - Vite a punta                | -00863-g - Point screw              | -00863-g - Vis pointeau d'articulation |
| -00863-14 - Frizione per vite          | -00863-14 - Adjustment screw        | -00863-14 - Frein de la vis de réglage |
| -1001004 - Vite M3x12 UNI 5931         | -1001004 - M3x12 UNI 5931 screw     | -1001004 - Vis M3x12 UNI 5931          |
| -1001008 - Vite M3x16 UNI 5931         | -1001006 - M3x16 UNI 5931 screw     | -1001006 - Vis M3x16 UNI 5931          |
| -1001012 - Vite M4x10 UNI 5931         | -1001012 - M4x10 UNI 5931 screw     | -1001012 - Vis M4x10 UNI 5931          |
| -1001016 - Vite M4x18 UNI 5931         | -1001016 - M4x18 UNI 5931 screw     | -1001016 - Vis M4x18 UNI 5931          |
| -1001017 - Vite M4x20 UNI 5931         | -1001017 - M4x20 UNI 5931 screw     | -1001017 - Vis M4x20 UNI 5931          |
| -1001027 - Vite M5x16 UNI 5931         | -1001027 - M5x16 UNI 5931 screw     | -1001027 - Vis M5x16 UNI 5931          |
| -1002001 - Vite M4x8 UNI 5931          | -1002001 - M4x8 UNI 5931 screw      | -1002001 - Vis M4x8 UNI 5931           |
| -1051002 - Dado esag.M3 UNI15588       | -1051002 - MB UNI15588 nut          | -1051002 - Ecrou MB UNI15588           |
| -1051005 - Dado esag.M6 UNI15588       | -1051005 - MB UNI15588 nut          | -1051005 - Ecrou MB UNI15588           |
| -1065003 - Rosetta dia.4 UNI16592      | -1065003 - Dia.4 UNI16592 washer    | -1065003 - Rondelle dia.4 UNI16592     |
| -1066002 - Rosetta dia.4 UNI18842      | -1066002 - Dia.4 UNI18842 washer    | -1066002 - Rondelle dia.4 UNI18842     |
| -1066003 - Rosetta dia.5 UNI18842      | -1066003 - Dia.5 UNI18842 washer    | -1066003 - Rondelle dia.5 UNI18842     |
| -1066005 - Rosetta dia.8 UNI18842      | -1066005 - Dia.8 UNI18842 washer    | -1066005 - Rondelle dia.8 UNI18842     |
| -2001010 - Anello arresto dia.7        | -2001010 - Dia.7 retaining ring     | -2001010 - Rondelle d'arrêt dia.7      |
| -3050008 - Boccia autolubrificante     | -3050008 - Bushing                  | -3050008 - Douille                     |
| -CX5-217 - Perno aggancio molla        | -CX5-217 - Spring anchoring rod     | -CX5-217 - Axe de retenue du ressort   |
| -000686 - Perno guida                  | -000686 - Guide rod                 | -000686 - lige                         |
| -D00688 - Piastra                      | -D00688 - Plate                     | -D00688 - Plaque                       |
| -D00689 - Supporto orientabile compl.  | -D00689 - Adjustable support ass'y) | -D00689 - Support pivotant             |
| -D00690 - Supporto esterno             | -000690 - Outside bulb holder       | -000690 - Support de lampe extérieur   |
| -D00691 - Supporto interno             | -D00691 - Inside bulb holder        | -D00691 - Support de lampe intérieur   |
| -D00693 - Vite spostamento longitudin. | -000693 - Axial adjustment screw    | -000693 - Vis pour déplacement longit. |
| -D00695 - Vite spostamento orizzont.   | -000695 - Horiz. adjustment screw   | -D00695 - Vis pour déplacement horiz.  |
| -D00697 - Vite spostamento verticale   | -000697 - Vert. adjustment screw    | -D00697 - Vis pour de'placement vert.  |
| -D08534 - Carrello portolampada        | -008534 - Cathode damp              | -D08534 - Chariot portelampe           |
| -D10531 - Distanziale portaguida       | -010531 - Spacer                    | -D10531 - Entretoise                   |
| -X16-2635- Vite fissaggio molla        | -X16-2635- Spring screw             | -X16-2635- Vis de fixation du ressort  |
| -X16-2636- Molla                       | -X16-2636- Spring                   | -X16-2636- Ressort                     |

# D06790

## LANTERNA ZX8000H

Fig.8

| Terminale positivo                | Positive cable assembly          | Conducteur positif                 |
|-----------------------------------|----------------------------------|------------------------------------|
| -01842 - Rosetta                  | -01842 - Washer                  | -01842 - Rondelle                  |
| -1053007 - Dado esag.M10 UNI15588 | -1053007 - M10 UNI15588 nut      | -1053007 - Ecrou M10 UNI15588      |
| -1066006 - Rosetto dia.8 UNI18842 | -1066006 - Dia.8 UNI18842 washer | -1066006 - Rondelle dia.8 UNI18842 |
| -1801021 - Guarnizione OR         | -1801021 - O-Ring                | -1801021 - Joint en caoutchouc OR  |
| -D06792 - Asta positivo           | -D06792 - Positive rod           | -D06792 - Tige positive            |
| -D06793 - Disco isolante          | -D06793 - Insulating disc        | -D06793 - Disque isolant           |



# LANTERNA ZX8000H

Terminale positivo completo — Positive cable assembly

Dis. D10445-8

# D06790

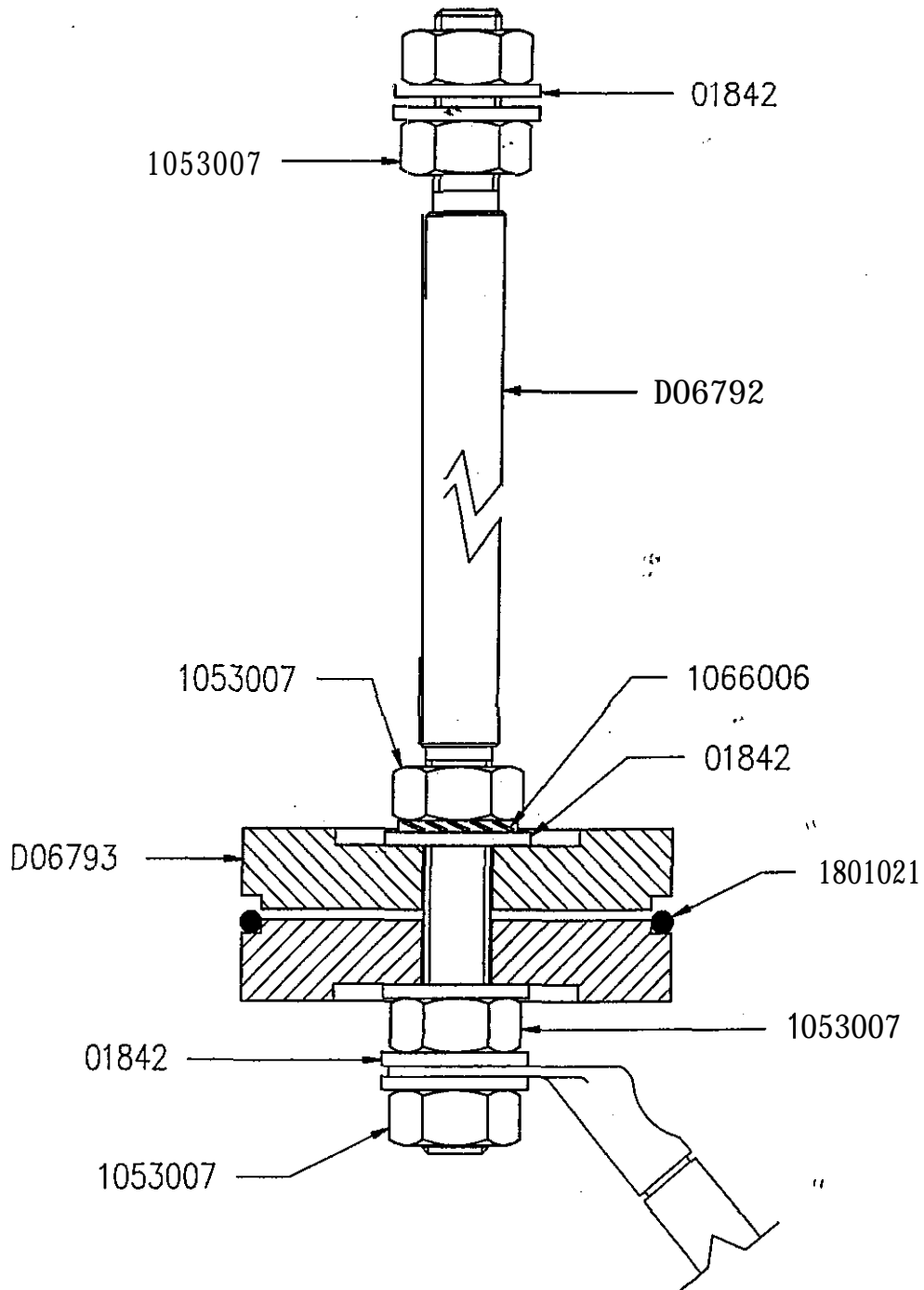


Fig. 8

| Disegnato | Data     | Agglomerato |
|-----------|----------|-------------|
| MC        | 09-03-99 |             |

Scala

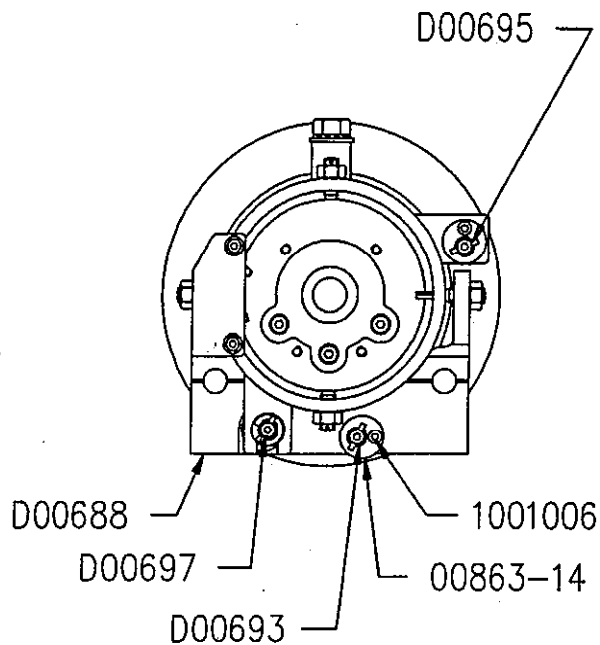
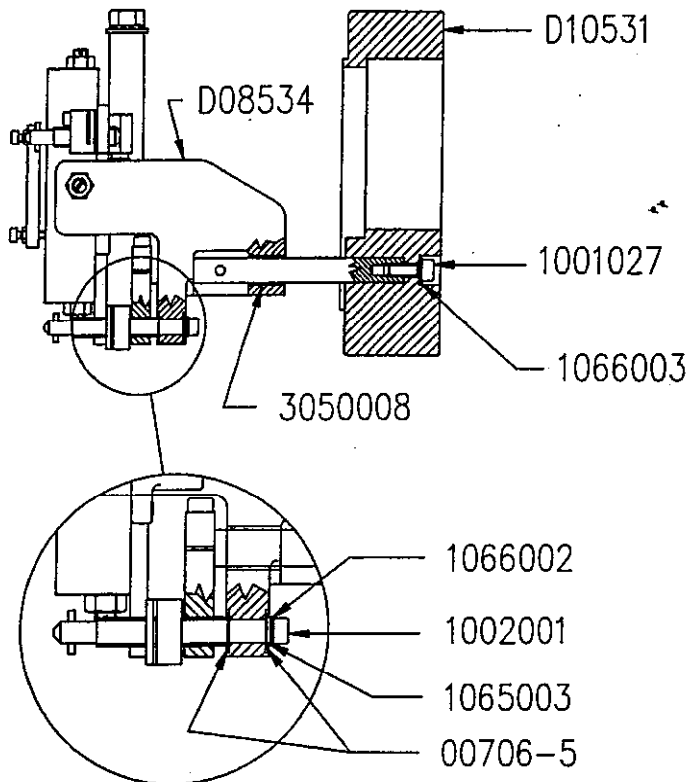


# LANTERNA ZX8000H

Dispositivo portalampada — Lampholder assembly

Di s.D10445-

# D10530



# D00689

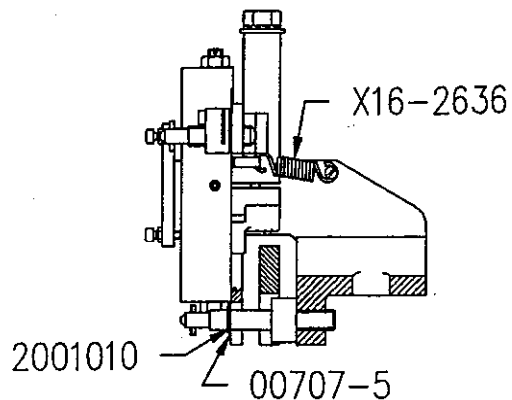
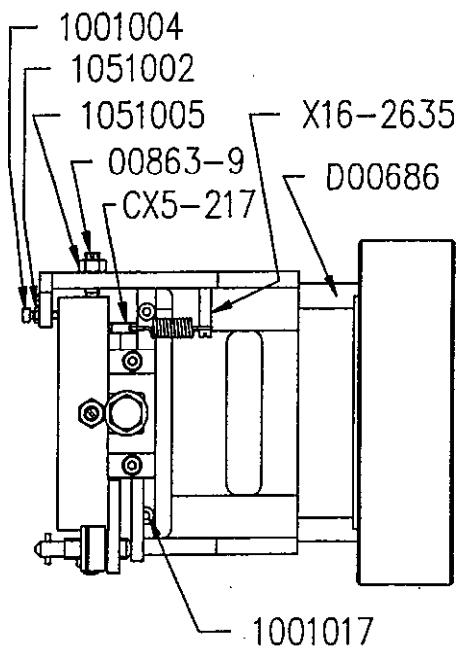
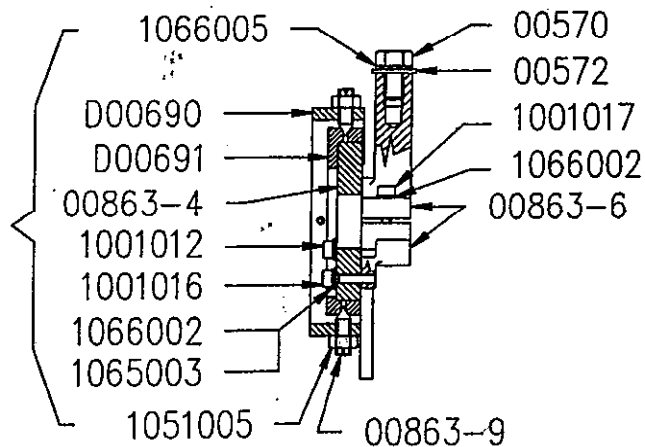


FIG.7

LANTERNA ZX8000H

Fig.5

|  |  |   |
|--|--|---|
| <ul style="list-style-type: none"> <li>-00857 - Rosetta</li> <li>-1001046 - Vite M6x50 UN15931</li> <li>-1054002 - Oado esag.M4 UN15721</li> <li>-1066004 - Rosetta dia.6 UNI8842</li> <li>-2604015 - Tappo in plastica</li> <li>-2631101 - Aggancio</li> <li>-2631003 - clips a mola</li> <li>-3620223 - Mrsettiera</li> <li>-3818008 - Accenditore</li> <li>-4801021 - Specchio freddo dia.340</li> <li>-D01449 - Supporto forcella completo</li> <li>-D03694 - Tazza portasp specchio dia.340</li> <li>-D03695 - Anello tenuta specchio</li> <li>-D04030 - Molla</li> <li>-D06795 - Tubo in plastica</li> <li>-D06926 - Appt. magnete(A richiesta)</li> <li>-D07740 - Isolante termico</li> <li>-D08455 - Isolante termico</li> <li>-008456 - Protezione calore</li> <li>-D08708 - Tirante tissaggio accenditore</li> <li>-D10475 - Isolante termico</li> <li>-D10335 - Cavo negativo completo</li> <li>-D10808 - Cavo positivo completo</li> <li>-X65H3460 - Tubo condotto aria</li> </ul> | <ul style="list-style-type: none"> <li>-00657 - Washer</li> <li>-1001046 - M6x50 UN15931 screw</li> <li>-1054002 - M4 UN15721 nut</li> <li>-1066004 - Dia.6 UN16642 Washer</li> <li>-2604015 - Plastic kork</li> <li>-2631101 - Clips</li> <li>-2631003 - Spring clamp</li> <li>-3620223 - Terminal board</li> <li>-3616006 - Electronic igniter</li> <li>-4601021 - Dia.346 cold light mirror</li> <li>-D01449 - Fork support assembly</li> <li>-D03694 - Mirror holder cup</li> <li>-D03695 - Mirror retaining ring</li> <li>-D04030 - Spring</li> <li>-D06795 - Plastic tube</li> <li>-D06926 - Magnet(On request)</li> <li>-D07740 - Heat shield</li> <li>-D08455 - Heat shield</li> <li>-D08456 - Heat shield</li> <li>-D08708 - Igniter fixing rod</li> <li>-D10475 - Heat shield</li> <li>-D10335 - Negative cable assembly</li> <li>-D10808 - Positive cable assembly</li> <li>-X65H3460 - Pyrex air pipe</li> </ul> | <ul style="list-style-type: none"> <li>-00657 - Rondelle</li> <li>-1001046 - Vis M6x50 UN15931</li> <li>-1054002 - Erou M4 UN15721</li> <li>-1066004 - Rondelle dia.6 UNI8842</li> <li>-2604015 - Bouchon en plastique</li> <li>-2631101 - Clips</li> <li>-2631003 - Clips a ressort</li> <li>-3620223 - Bornier</li> <li>-3618008 - Amorceur</li> <li>-4601021 - Miroir froid dia.340</li> <li>-D01449 - Support lampe complet</li> <li>-D03694 - Tasse porte-miroir</li> <li>-D03695 - Bague de fixation miroir</li> <li>-D04030 - Ressort</li> <li>-D06795 - Tube en plastique</li> <li>-D06926 - Aimant(sur demande)</li> <li>-D07740 - Protection chaleur</li> <li>-D08455 - Protection chaleur</li> <li>-008456 - Protection chaleur</li> <li>-D08708 - Prisonnier de fixation</li> <li>-D10475 - Protection chaleur</li> <li>-D10335 - Cable negatif complet</li> <li>-D10808 - Cable positif complet</li> <li>-X65H3460 - Tube conduit air</li> </ul> |
|--|--|---|

LANTERNA ZX8000H

Fig.6

| Interruttore ventilazione  | Blower safety switch   | Interrupteur ventilateur   |
|--|--|--|
| <ul style="list-style-type: none"> <li>01156 - Rosetta</li> <li>1001005 - Vite M3x14 UN15931</li> <li>1001006 - Vite M3x16 UN15931</li> <li>1051002 - Dado esag.M3 UN15566</li> <li>18-6230 - Piastrina isolante</li> <li>CX10-184 - Squadretta</li> <li>D10807 - Microinterrutt.con serranda</li> </ul> | <ul style="list-style-type: none"> <li>-01158 - Washer</li> <li>-1001005 - M3x14 UN15931 screw</li> <li>-1001006 - M3x16 UN15931 screw</li> <li>-1051002 - M3 UN15586 nut</li> <li>-18-6230 - Insulating plate</li> <li>-CX10-184 - Bracket</li> <li>-D10807 - Microswitch assembly</li> </ul> | <ul style="list-style-type: none"> <li>-01158 - Rondelle</li> <li>-1001005 - Vis M3x14 UN15931</li> <li>-1001006 - Vis M3x16 UN15931</li> <li>-1051002 - Erou M3 UN15566</li> <li>-18-6230 - Isolant</li> <li>-CX10-184 - support</li> <li>-D10807 - Micro-interrupteur complet</li> </ul> |



# LANTERNA ZX8000H

Interruttore sicurezza ventilazione -- Blower safety switch

Dis. D10445-6

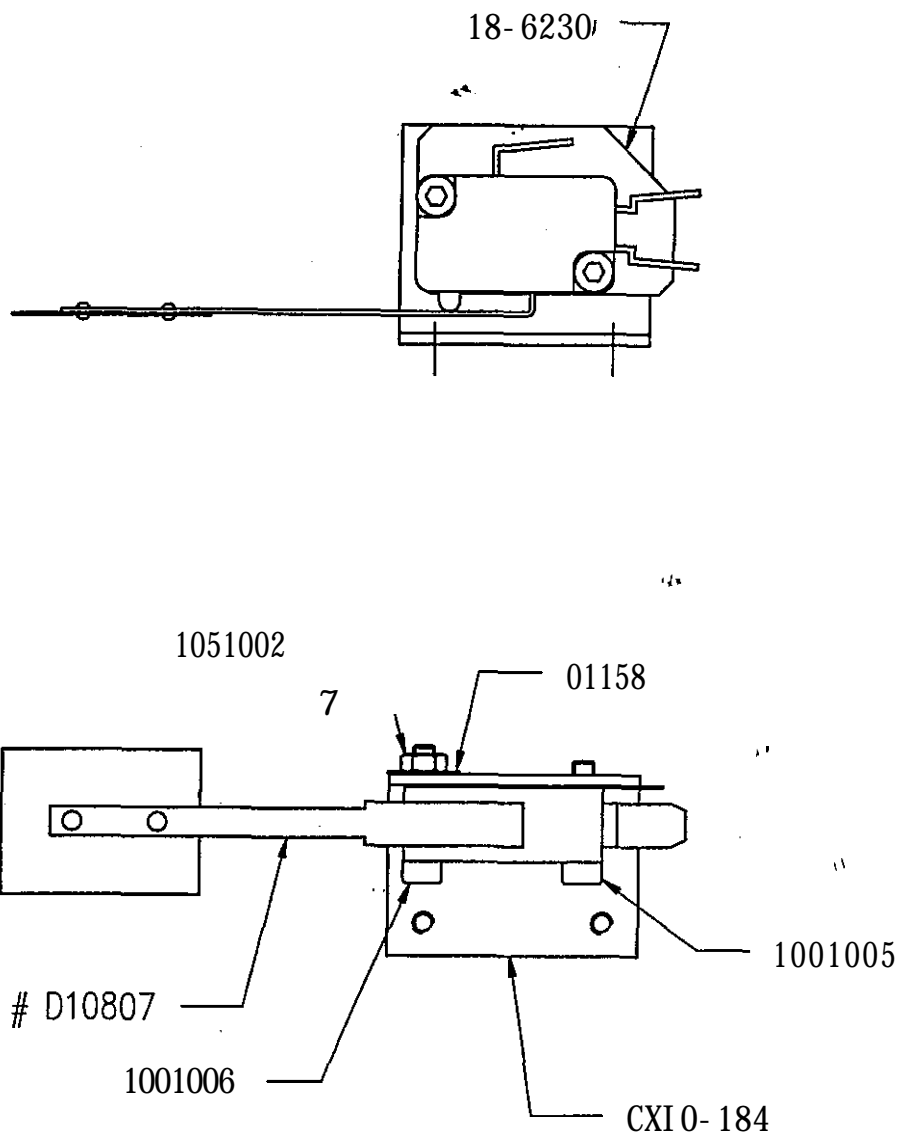


Fig.6

| Disegnato | Data    | Aggiornato |       |
|-----------|---------|------------|-------|
| MC        | w-03-99 |            | Scala |



LANTERNA ZX8000H

Di s. D10445-5

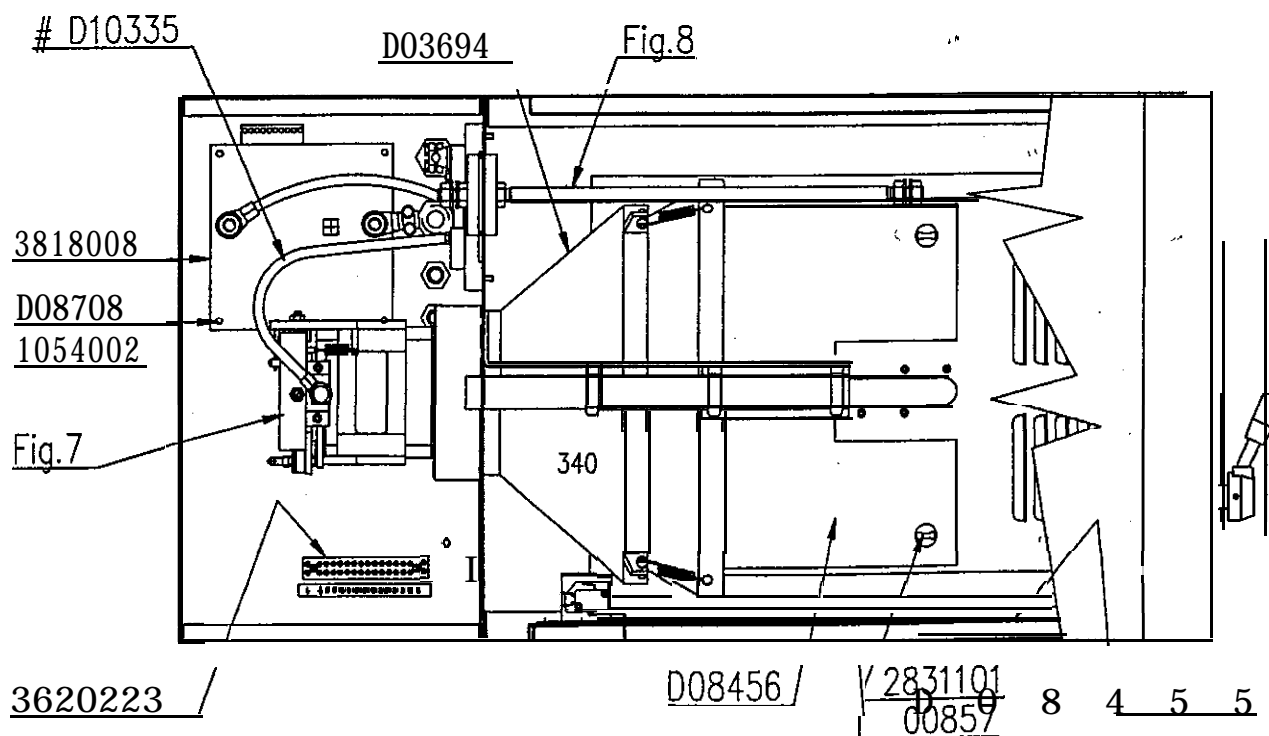
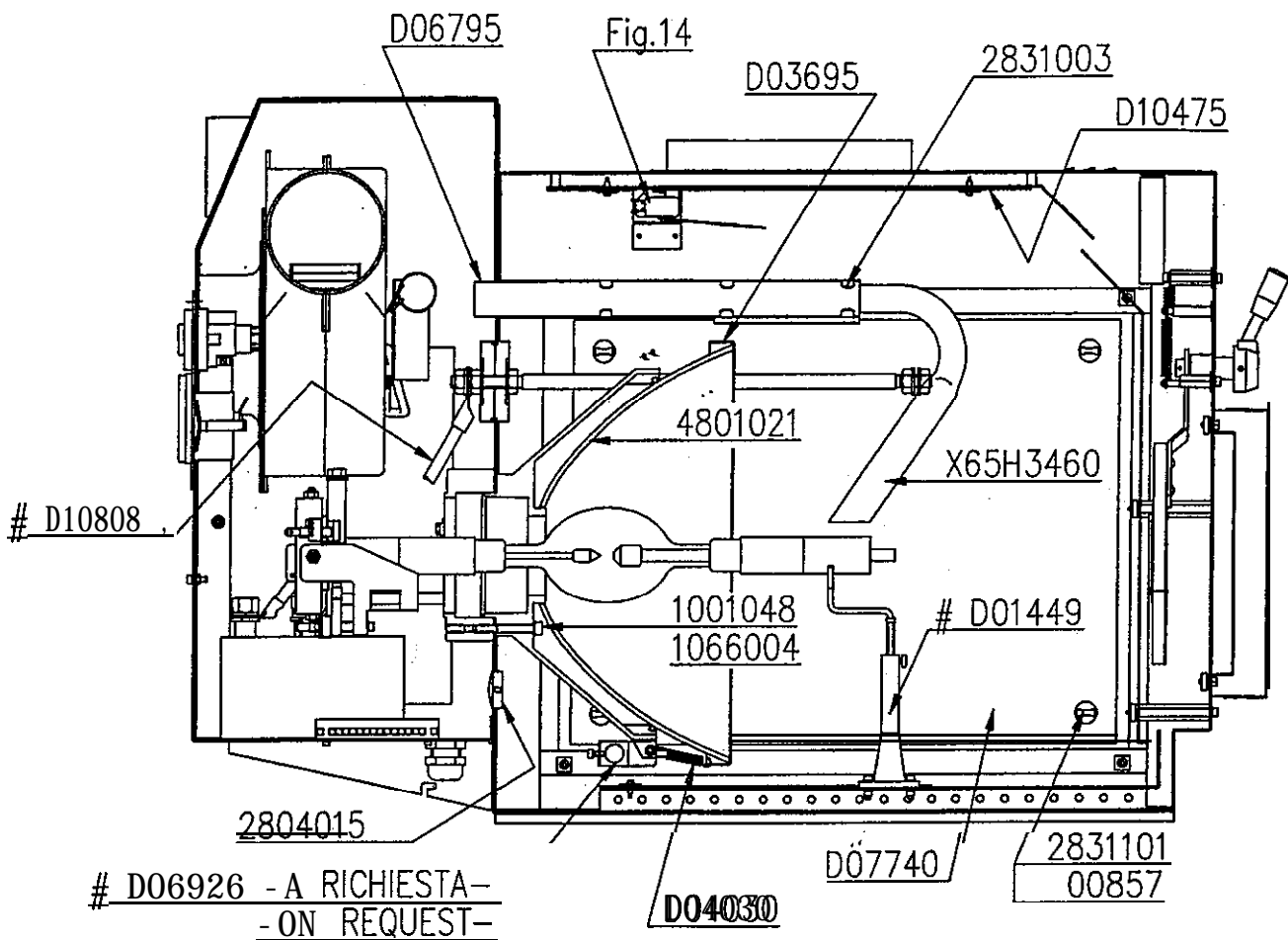


Fig. 5

|           |          |             |       |
|-----------|----------|-------------|-------|
| Disegnato | Data     | Agglomerato |       |
| MC        | 05-02-99 |             | Scala |

